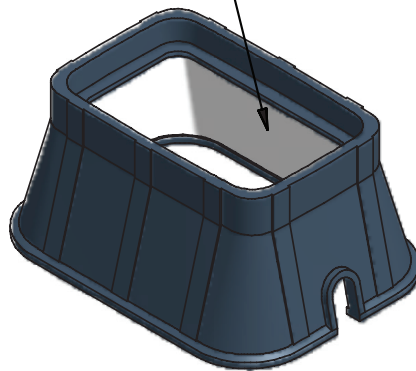


Heavywall  
**1118 MSBC**



White Interior

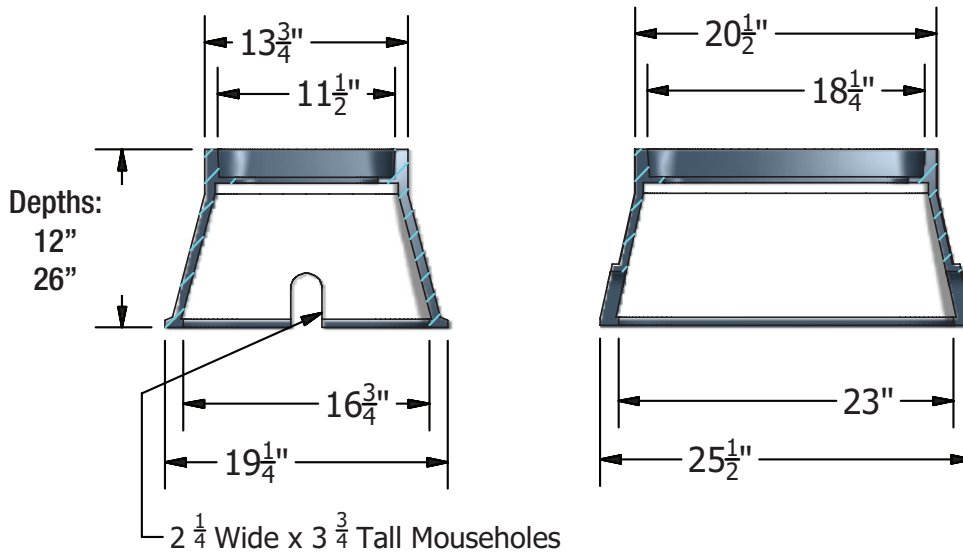


**COVER:**

Style: Flush  
Material: Ductile Iron  
Weight: 23 lbs  
Options: Logos and Special Marking

**BODY:**

Material: Polyethylene Blend  
Model:  $14" \times 21"$   
Weight:  $12"$  Depth: 15 lbs  
 $18"$  Depth: 28 lbs  
Mouseholes: 2



Medium Duty:  
Non-deliberate Traffic

For use in non-vehicular traffic situations only.

\*Cover comes standard with permanent markings for manufacturer, load rating, model size and manufacturing location.

Contact your Oldcastle Enclosure Solutions Distribution Center for specific information and additional options.

Actual load rating is determined by the box and cover combination. Weights and dimensions may vary slightly.

Heavywall  
**1118 MSBC**

**Options:**
**Available Heavy Duty Plastic Covers:**

Flush Solid Cover

**Available Polymer Concrete Covers:**

Flush Solid Cover

Flush Cover with Cast Iron Reader Door

**Available Ductile Iron Covers:**

Flush Solid Cover

Flush Cover with Cast Iron Reader Door

**Add On Options for All Covers:**

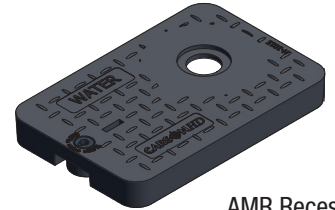
Touch Read Hole

**Add On Options for Plastic and Polymer Covers:**

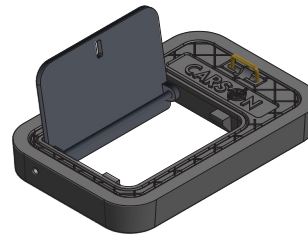
ERT Holder



Flush Solid



AMR Recess



Reader Door Detail



Undermount Detail

**Raw Material Specifications:**

- Meter Boxes are high-density Polyethylene, one-piece molded construction
- Wall thickness minimum .550"
- Vertical load rating minimum 15,000 lbs.
- Sidewall loading of 200 lb side load, applied with a 4" X 4" plate.
- Multi-layer wall construction
- Black exterior surface to provide UV protection
- Gray foaming for strength and insulating value
- White interior surface for ease of meter reading
- Manufactured by Oldcastle Precast Enclosure Solutions

**Cast Iron Meter Ring and Lid Specifications:**

- Made of cast iron conforming to ASTM A48 standards and marked with country of origin
- Coated with a factory applied water based asphalt paint
- Castings are ground smooth and cleaned by shot blasting, uniform quality, free from sand holes, shrinkage, cracks and other surface defects, with a dimensional tolerance of +/- 1/16" per foot based on the accepted foundry tolerances outlined in the Iron Castings Handbook published by the American Foundry Society.

**Product Load Rating:**


Medium Duty : Non-Deliberate Traffic

**Note:**

Actual load rating is determined by the box and cover combination. Weights and dimensions may vary slightly

All information contained on this sheet is current at the time of printing.

Oldcastle Precast, Inc. reserves the right to discontinue or update product information without notice.

