



FOR APPROVAL ONLY

NOT RELEASED FOR FABRICATION

REVISIONS	DATE	BY
A SUBMIT FOR APPROVAL	09-19-22	YZ

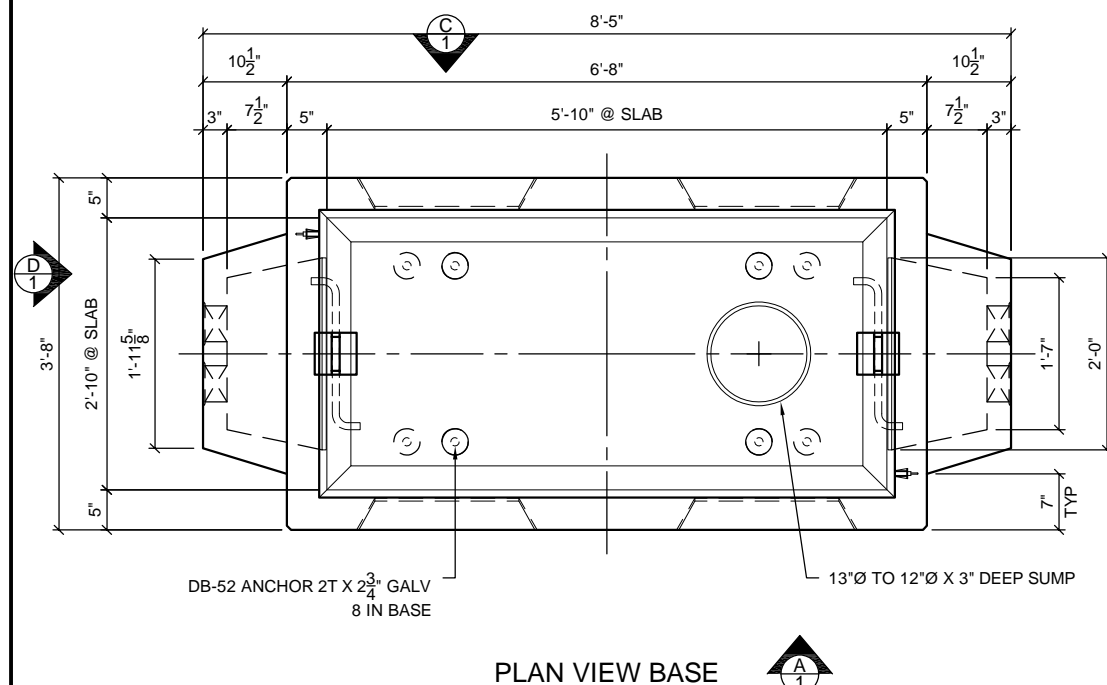
STRUCTURAL NOTES:

- DESIGN SPECIFICATIONS:**
- ACI 318 BUILDING CODE REQUIREMENTS FOR STRUCTURAL CONCRETE
 - AASHTO STANDARD SPECIFICATIONS FOR HIGHWAY BRIDGES
 - ASTM C857 STANDARD PRACTICE FOR MINIMUM STRUCTURAL DESIGN LOADING FOR UNDERGROUND PRECAST CONCRETE UTILITY STRUCTURES

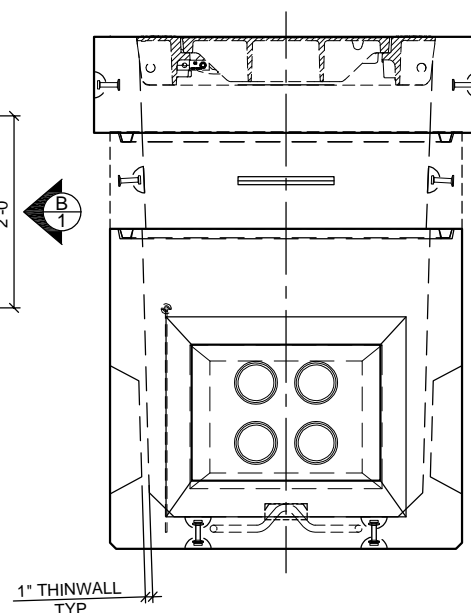
- MATERIALS:**
- CONCRETE 28 DAY STRENGTH, $f_c = 6,000$ PSI
 - CONCRETE STRIPPING STRENGTH, $f_{ci} = 1,500$ PSI MIN
 - REBAR - ASTM A706 GRADE 60

- DESIGN CRITERIA:**
- LIVE LOAD = HS-20 FULL TRAFFIC
 - HS 20 SURCHARGE = 80 PSF TO 8 FT BELOW GRADE
 - CONCRETE DENSITY = 150 PCF
 - SOIL DENSITY = 120 PCF
 - DRY SOIL LATERAL LOAD = 40 PCF
 - SATURATED SOIL LATERAL LOAD = 80 PCF
 - WATER TABLE DEPTH = 5 FT BELOW GRADE

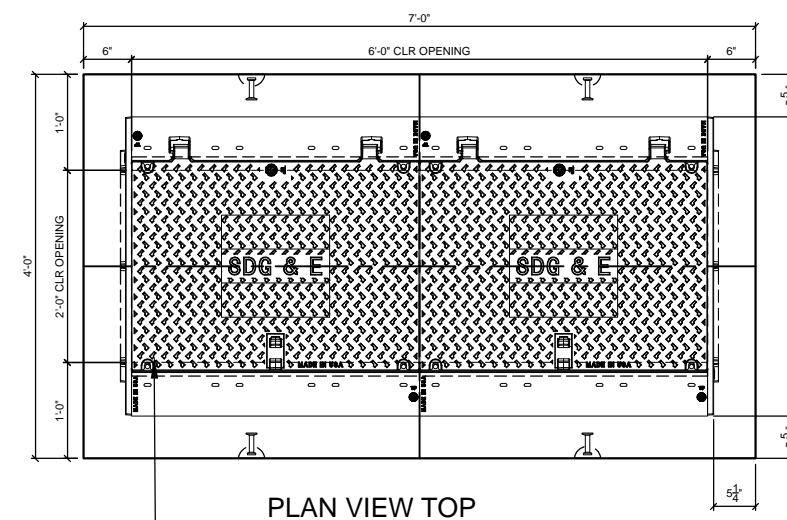
- GENERAL NOTES:**
- CONTRACTOR SHALL:
 - 1.1 GROUT AND/OR SEAL ALL JOINTS AS REQUIRED
 - 1.2 VERIFY ALL DIMENSIONS AND OPENING LOCATIONS
 - DO NOT BACKFILL UNTIL STRUCTURE HAS BEEN COMPLETELY ASSEMBLED
 - TOLERANCES ARE PER ASTM C858



PLAN VIEW BASE

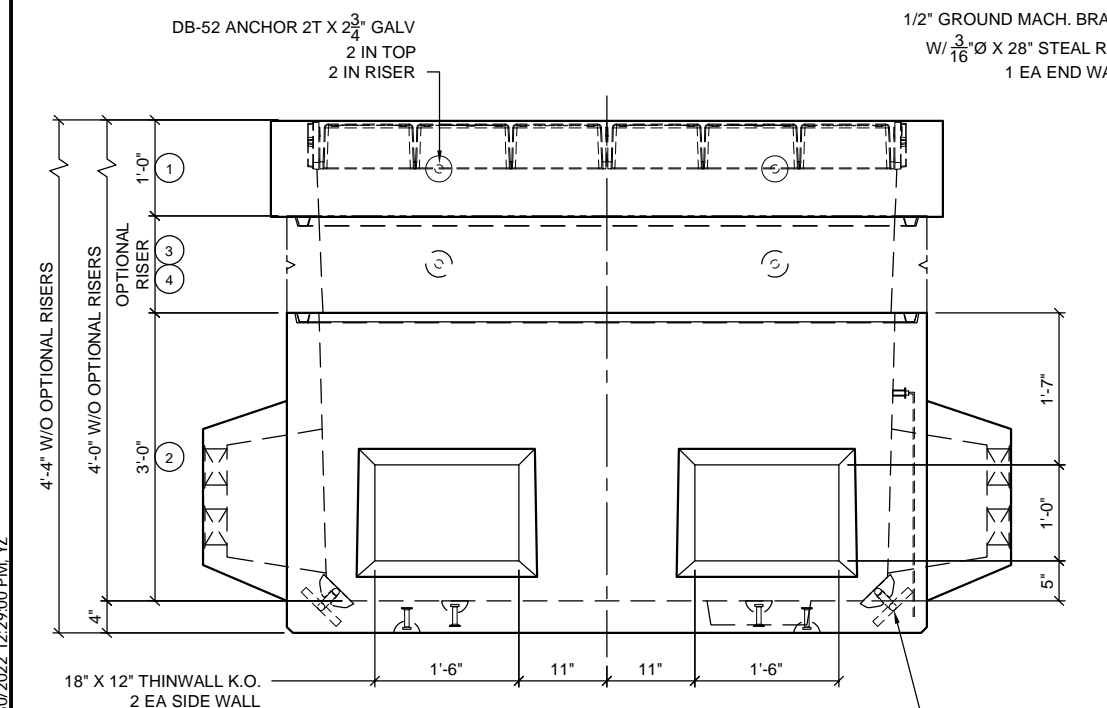


VIEW D

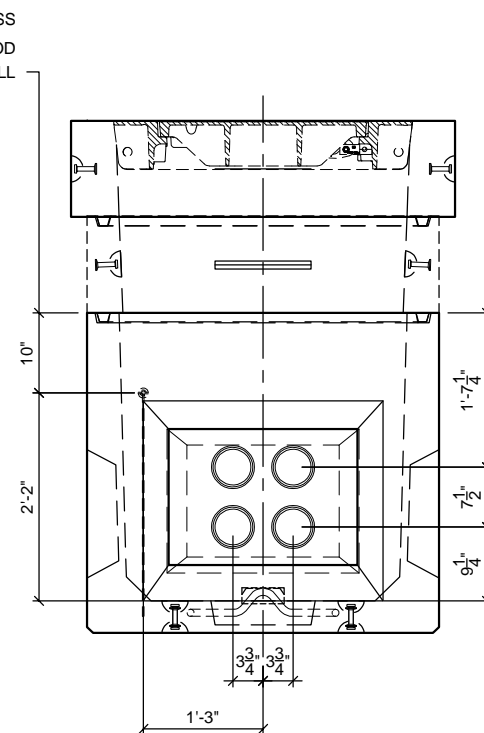


PLAN VIEW TOP

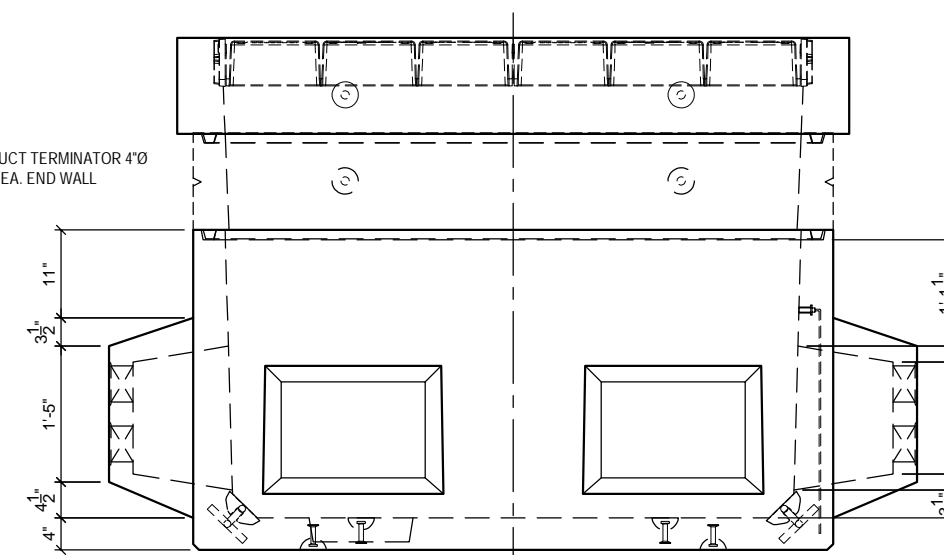
EJ 00680874B02 DIT COVER



VIEW A



VIEW B



VIEW C

BILL OF MATERIALS

SHIP LOOSE ITEMS			
#	QTY.	DESCRIPTION	ITEM #
1	1	SDGE 36-12 TRAFFIC TOP (3314)	
2	1	SDGE 36-36 BASE (3314)	990018065
OPTIONAL SHIP LOOSE ITEMS			
4	VARIES	SDGE 36-12 RISER (3314)	990016180
5	VARIES	SDGE 36-06 RISER (3314)	990018020

INDEX OF DRAWINGS

COMPONENT	DRAWING		
	FORM I.D.	WEIGHT LBS	CYD
COMPLETE ASSEMBLY	070-X013029-007	7,276	1.80
	070-X013029-007		
TOP	SD-035	1,394	0.34
	070-X013029-003		
12" RISER	SD-028	994	0.25
	070-X013029-004		
6" RISER	SD-028	578	0.14
	070-X013029-005		
BASE	SD-052	4,311	1.06



THIS DOCUMENT IS THE PROPERTY OF OLDCASTLE INFRASTRUCTURE, INC. IT IS CONFIDENTIAL. SUBMITTED FOR REFERENCE PURPOSES ONLY AND SHALL NOT BE USED IN ANY WAY INJURIOUS TO THE INTERESTS OF, OR WITHOUT THE WRITTEN PERMISSION OF OLDCASTLE INFRASTRUCTURE, INC. COPYRIGHT © 2022 OLDCASTLE INFRASTRUCTURE, INC. ALL RIGHTS RESERVED.

3'-0" X 6'-0" X 4'-0" DEEP RECESS PULL BOX (3314 K/T)

SUBMITTAL
SDGE 3314 K/T (STOCK NUMBER)

SAN DIEGO GAS & ELECTRIC STANDARD PRODUCTS

CUSTOMER		DRAWING SCALE (UNO)	
		1/2" = 1'-0"	
DATE DRAWN 09-19-22	JOB NUMBER SDGE	ITEM NUMBER ----	PRODUCTION QUANTITY
DRAWN BY YZ	ENGINEER ER	PM KY	SALES ORDER MANUFACTURED AT LAKESIDE
DRAWING NUMBER 070-X013029-007		REVISION A	SHEET 1 OF 2

SUBMITTAL: 9/30/2022 12:29:00 PM, YZ