



FOR APPROVAL ONLY

NOT RELEASED FOR FABRICATION

REVISIONS	DATE	BY
4 SWAPPED OUT LIDS	09-19-22	YZ
3 REVISE DIM TO 5"Ø K'O'S	02-14-20	BJ
2 UPDATE NOTES & TITLE BLOCK	10-14-19	CMJ
1 NEW ENGINEER STAMP	08-26-19	CMJ

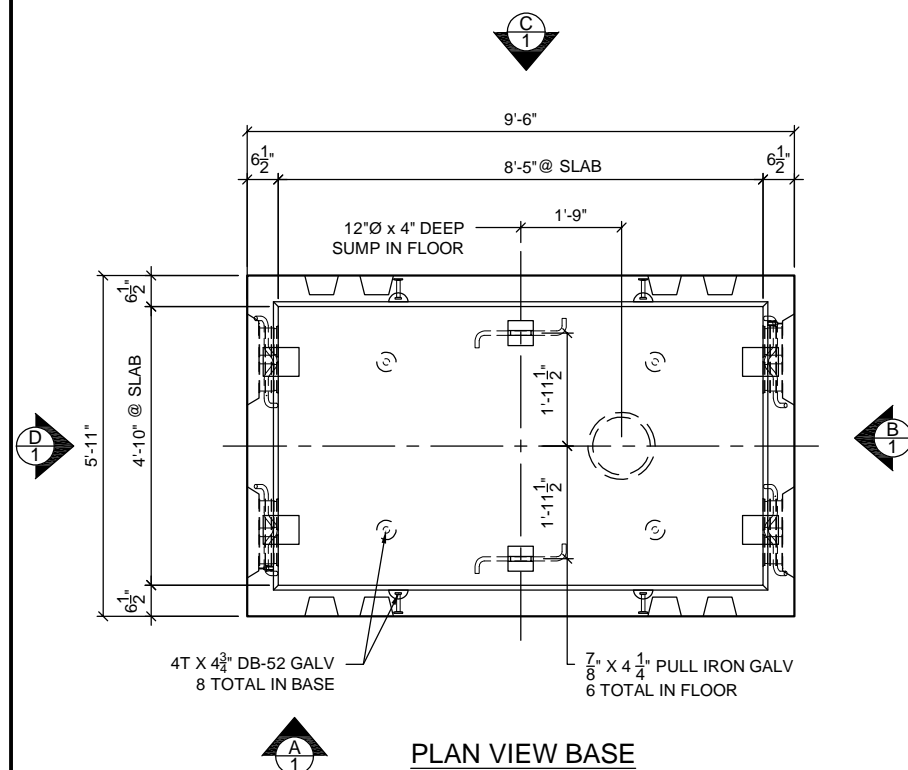
STRUCTURAL NOTES:

- DESIGN SPECIFICATIONS:
- ACI 318 BUILDING CODE REQUIREMENTS FOR STRUCTURAL CONCRETE
 - ASTM C857 STANDARD PRACTICE FOR MINIMUM STRUCTURAL DESIGN LOADING FOR UNDERGROUND PRECAST CONCRETE UTILITY STRUCTURES

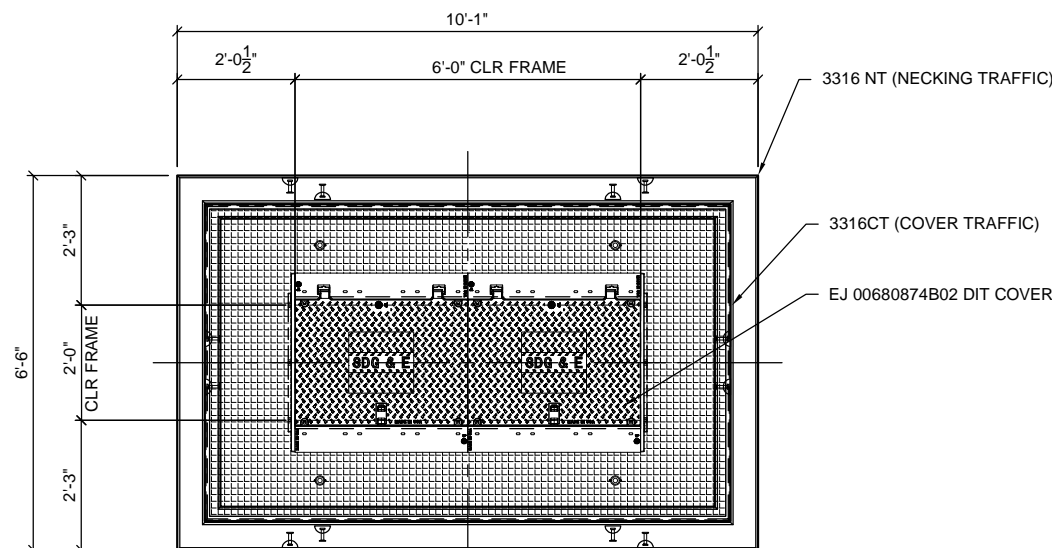
- MATERIALS:
- CONCRETE 28 DAY STRENGTH, $f_c = 6,000$ PSI
 - CONCRETE STRIPPING STRENGTH, $f_{ci} = 1,500$ PSI MIN
 - REBAR - ASTM A706 GRADE 60

- DESIGN CRITERIA:
- LIVE LOAD = HS-20 FULL TRAFFIC
 - HS 20 SURCHARGE = 80 PSF TO 8 FT BELOW GRADE
 - CONCRETE DENSITY = 150 PCF
 - SOIL DENSITY = 120 PCF
 - DRY SOIL LATERAL LOAD = 40 PCF
 - SATURATED SOIL LATERAL LOAD = 80 PCF
 - WATER TABLE DEPTH = 5 FT BELOW GRADE

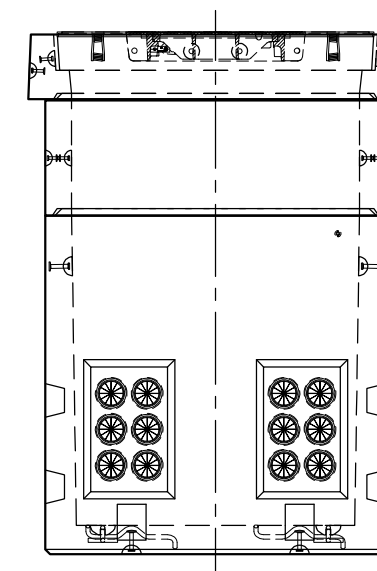
- GENERAL NOTES:
- CONTRACTOR SHALL:
 - GROUT AND/OR SEAL ALL JOINTS AS REQUIRED
 - VERIFY ALL DIMENSIONS AND OPENING LOCATIONS
 - DO NOT BACKFILL UNTIL STRUCTURE HAS BEEN COMPLETELY ASSEMBLED
 - TOLERANCES ARE PER ASTM C858



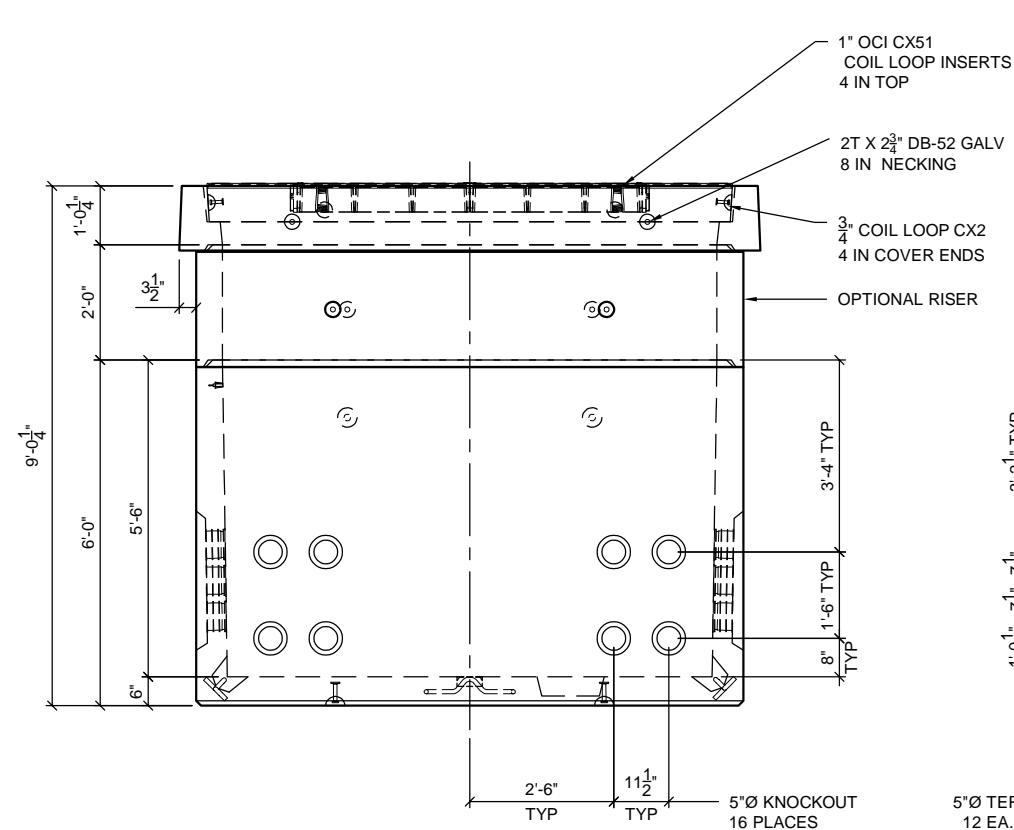
PLAN VIEW BASE



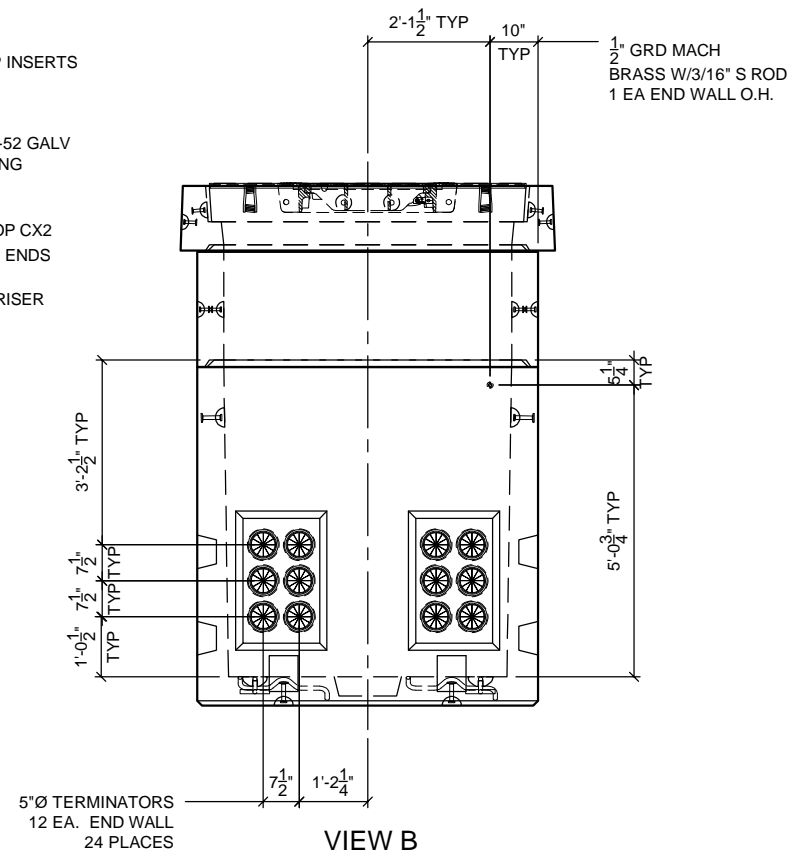
PLAN VIEW NECKING & COVER



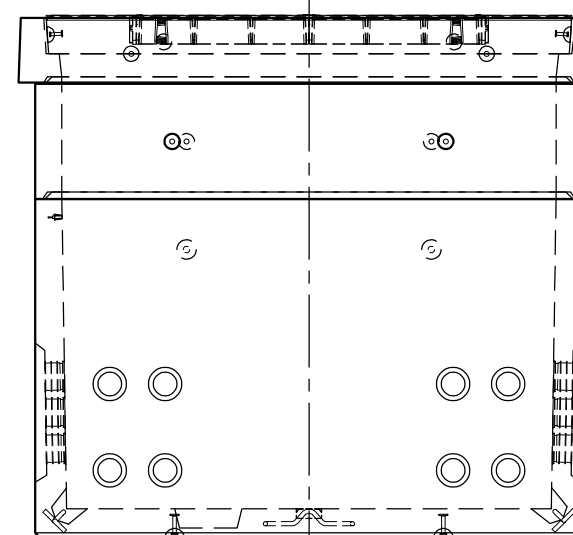
VIEW D



VIEW A



VIEW B



VIEW C

BILL OF MATERIALS

VAULT COMPONENTS			
#	QTY.	DESCRIPTION	ITEM #
1	1	3315DIT (TRAFFIC PLUG)	
2	1	3316NT (TRAFFIC NECK)	990018300
3	1	3316 BASE	990018330
4	2	EJ 00680874B01 DUCTILE IRON COVER (OUTER)	
5	2	EJ 00680894 DUCTILE IRON COVER (INNER)	

INDEX OF DRAWINGS

COMPONENT	DRAWING			ITEM #
	FORM I.D.	WEIGHT LBS	CYD	
COMPLETE ASSEMBLY	070-X013027-001	25,730	6.35	990015980-T
	070-X013027-002			
NECK	SD-025	2,545	0.63	990018300
RISER	070-X013027-003			990018250
	SD-056	3,988	0.98	
BASE	070-X013026-004			990018330
	SD-039	15,454	3.82	

Oldcastle Infrastructure
 10650 HEMLOCK AVENUE FONTANA, CA 92337
 P 800.626.3860 | F 909.350.8518
 A CRH COMPANY

THIS DOCUMENT IS THE PROPERTY OF OLDCASTLE INFRASTRUCTURE, INC. IT IS CONFIDENTIAL, SUBMITTED FOR REFERENCE PURPOSES ONLY AND SHALL NOT BE USED IN ANY WAY INJURIOUS TO THE INTERESTS OF, OR WITHOUT THE WRITTEN PERMISSION OF OLDCASTLE INFRASTRUCTURE, INC. COPYRIGHT © 2022 OLDCASTLE INFRASTRUCTURE, INC. ALL RIGHTS RESERVED.

3316 VAULT (5'-0" X 8'-6" X VARIES) TRAFFIC

SUBMITTAL
 SDGE 3316 K/T (STOCK NUMBER)
 SAN DIEGO GAS & ELECTRIC STANDRD PRODUCT

CUSTOMER			DRAWING SCALE (IND)	
			1:40	
DATE DRAWN	JOB NUMBER	ITEM NUMBER	PRODUCTION QUANTITY	
03-05-2018	SDGE	990018220		
DRAWN BY	ENGINEER	SALES	SALES ORDER	MANUFACTURED AT
WBL	FS			LAKE SIDE
DRAWING NUMBER			REVISION	SHEET
070-X013027-001			4	1 OF 1