

### Material & Style

Fiber Reinforced Polymer  
w/ Polymer Concrete Ring

Straight Wall Type

17" x 30"

12", 18", 24" depths

### Performance & Weight

ANSI/SCTE-77 Tier 15



Medium Duty  
ANSI/SCTE TIER 15

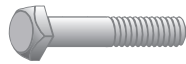
For use in non-vehicular traffic situations only. Weights and dimensions may vary slightly. Actual load rating is determined by the box and cover combination.

All information contained on this sheet is current at the time of publication.  
Oldcastle Infrastructure reserves the right to discontinue or update product information without notice.

Revision 12/2024

© 2024 Oldcastle Infrastructure, Inc.

**Fastener Options**



Standard Thread



Coil Thread



A



B



C



Bolt Retainer (for standard thread)



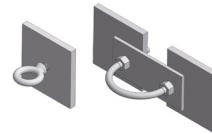
Rack Mount



EMS Marker



Ground Bus



Pulling Eye



Cable Rack




Cable Arm Unistrut

**Add On Options**

- Mouseholes/Knockouts
- Pulling Eye - 1,000 lb and 3,000 lb
- Dividers

- Ground Buss
- Racking Provision
- Lid Gaskets\*

 **WARNING:** Cancer - [www.P65Warnings.ca.gov](http://www.P65Warnings.ca.gov)

All information contained on this sheet is current at the time of publication. Oldcastle infrastructure reserves the right to discontinue or update product information without notice.

Revision 12/2024

\*Lid gaskets inhibit water flow into the box, they do not make enclosure fully waterproof.

© 2024 Oldcastle Infrastructure, Inc.