

### Material & Style

Fiber Reinforced Polymer  
w/ Polymer Concrete Ring

Flared

30" x 48"

18", 24", 36" depths

### Performance & Weight

ANSI/SCTE-77 Tier 15



Medium Duty  
ANSI/SCTE TIER 15

For use in non-vehicular traffic situations only. Weights and dimensions may vary slightly. Actual load rating is determined by the box and cover combination.

All information contained on this sheet is current at the time of publication.  
Oldcastle Infrastructure reserves the right to discontinue or update product information without notice.

Revision 02/2025

© 2025 Oldcastle Infrastructure, Inc.

**Fastener Options**



Standard Thread



Coil Thread



A



B



C



Bolt Retainer (for standard thread)

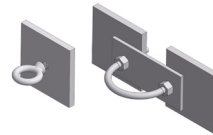
**Add On Options**



EMS Marker



Ground Bus



Pulling Eye

- Mouseholes/Knockouts
- Pulling Eye - 1,000 lb and 3,000 lb

- Ground Buss
- Dividers
- Lid Gaskets\*

 **WARNING:** Cancer - [www.P65Warnings.ca.gov](http://www.P65Warnings.ca.gov)

All information contained on this sheet is current at the time of publication.  
Oldcastle infrastructure reserves the right to discontinue or update product information without notice.

Revision 02/2025

\*Lid gaskets inhibit water flow into the box, they do not make enclosure fully waterproof.

© 2025 Oldcastle Infrastructure, Inc.