

### Material & Style

Fiber Reinforced Polymer  
w/ Polymer Concrete Ring

Flared

13" x 24"

12", 18", 24" depths

### Performance & Weight

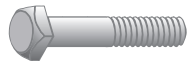
ANSI/SCTE-77 Tier 15



Medium Duty  
ANSI/SCTE TIER 15

For use in non-vehicular traffic situations only. Weights and dimensions may vary slightly. Actual load rating is determined by the box and cover combination.

**Fastener Options**



Standard Thread



Coil Thread



A



B



C



Bolt Retainer (for standard thread)

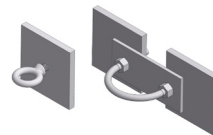
**Add On Options**



EMS Marker



Ground Bus



Pulling Eye

- Mouseholes/Knockouts
- Pulling Eye - 1,000 lb and 3,000 lb

- Ground Buss
- Dividers
- Lid Gaskets\*

 **WARNING:** Cancer - [www.P65Warnings.ca.gov](http://www.P65Warnings.ca.gov)

All information contained on this sheet is current at the time of publication.  
Oldcastle infrastructure reserves the right to discontinue or update product information without notice.

Revision 12/2024

\*Lid gaskets inhibit water flow into the box, they do not make enclosure fully waterproof.

© 2024 Oldcastle Infrastructure, Inc.