



Building Structures Market - Precast Cells & Shower Modules

# RAPPAHANNOCK SHENANDOAH WARREN (RSW) Regional Jail

Front Royal, Warren County, Virginia

Construction of the new \$82 million, RSW Regional Jail, serving Rappahannock, Shenandoah, and Warren Counties, with an initial capacity of 375 inmates, though approved for double bunking, with maximum capacity of 563 prisoners. The facility blends in with neighboring architecture without the visible features, such as razor ribbon, observation towers, or high mast lighting that is often associated with a correctional institution.

The 270,000 square foot, 2-story modern direct supervision facility contains a combination of medium and maximum security cell housing units and includes support services such as food service, laundry, intake and release, medical services,

recreation, education, central storage, visitation, magistrate, administration, and staff services.

## CONSTRUCTION CHALLENGE

The project schedule was critical and the maximum and medium security overall cell design was complex. Oldcastle Infrastructure was required to manufacture and out-fit (5) distinct types of precast concrete cells - some single or double cell modules, some with or without monolithic front and rear balcony -- ranging in size from 70 square feet to 90 square feet per cell in dimension. The Shower Modules were 143 square feet modules.

Production of the precast units began in

## DESIGN & CONSTRUCTION TEAM

### General Contractor

Howard Shockey & Sons

### Architect

Moseley Architects

### Owner

RSW Regional Jail Authority

### Precaster

Oldcastle Infrastructure

### Manufacturing Facility

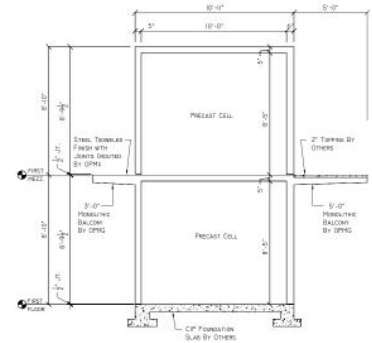
Oldcastle Infrastructure  
Fredericksburg, VA

# Rappahannock Shenandoah Warren (RSW) Regional Jail - Front Royal, Warren County, Virginia

September of 2012 and erection of a modules completed February 2013.

## PRECAST SOLUTION

Oldcastle Infrastructure was contracted to manufacture, out-fit and install 257 multiple type , pre-painted, rear-chase precast concrete jail cells and 12 shower modules complete with regular and ADA stainless steel combination lavatory and water closets, ceiling mount LED light fixtures with an LED night-light, wiring for light fixtures, receptacles and switches, stainless steel mirror, bunks, shelves and other amenities. The 7-foot by 10-foot cells manufactured were dimensions that are standard requirements of the Virginia Department of Corrections. The maximum-security pods can house 16 inmates while the other pods hold more prisoners.



## CONSTRUCTION SCHEDULE

### Start Date

July 2012

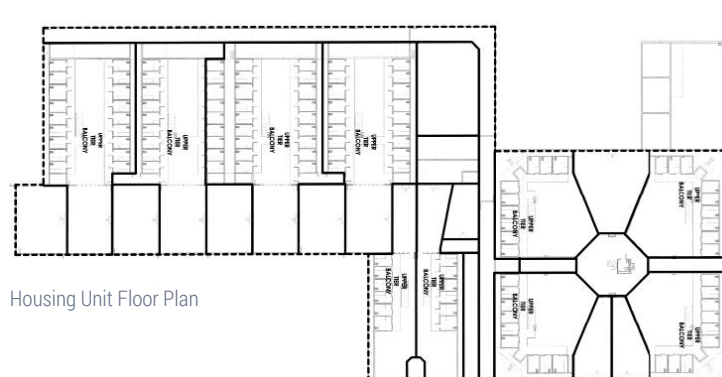
### Scheduled for completion

July 2014

## PROJECT SIZE

270,000-square-foot jail; Housing Unit:  
175,000 square feet; 1 and 2 levels

The RSW Regional Jail project is currently LEED® registered with the U.S. Green Building Council and will pursue certification.



## About Oldcastle Infrastructure

Oldcastle Infrastructure, A CRH Company, is the leading provider of building materials, products and services for infrastructure projects to several market sectors nationwide, including: Building Structures, Communications, Energy, Transportation and Water.

## For More Information Contact:

### Oldcastle Infrastructure

Phone: 215.257.2255

Address: 200 Keystone Drive, Telford, PA 18969  
oldcastleinfrastructure.com