

# SPOOKY NOOK SPORTS COMPLEX HOTEL AND RESTAURANT EXPANSION

## Onelift RC509 Pump Station used to Maximize Holding Capacity

Manheim, PA

Utilizing the vacant 14-acre Armstrong building in Manheim, PA, along with its 65 surrounding acres; Owner Sam Beiler has created a facility to host 20-plus sporting programs, including the Women's USA Field Hockey Team. The sporting complex opened last year, and this year a complementary Hotel and Restaurant expansion is being completed at the East Hempfield Twp., Lancaster County, PA facility.

Beiler is adding a new 130-room Warehouse Hotel and 260-seat restaurant to support the sporting complex, with new construction scheduled to be completed in the spring of 2015.

Spooky Nook Sports is currently the largest sports complex in the country, and claims that it is not aware of any larger indoor sporting venue in the world.

### THE CHALLENGE

Oldcastle Infrastructure was contracted to supply an additional turnkey submersible wastewater pump station to handle the additional wastewater capacity required for Spooky Nook Sports' new 130-room hotel and 260-seat restaurant in East Hempfield Twp., Lancaster County, PA

Oldcastle Infrastructure provided their OneLift RC611 pump station, with a 25 foot depth and storage capacity of 468 gallons per vertical foot, to accommodate the hotel

### DESIGN & CONSTRUCTION TEAM

**General Contractor**  
Ashlin Woods

**Owner**  
Spooky Nook Sports Complex

**Precast Manufacturing Plant**  
Oldcastle Infrastructure  
Spokane, Wash.

**The facility is billed as the  
largest indoor sports, events and  
entertainment complex  
in the United States.**



**“The total set took about two hours. Despite the weather conditions, it went as smooth as advertised”**

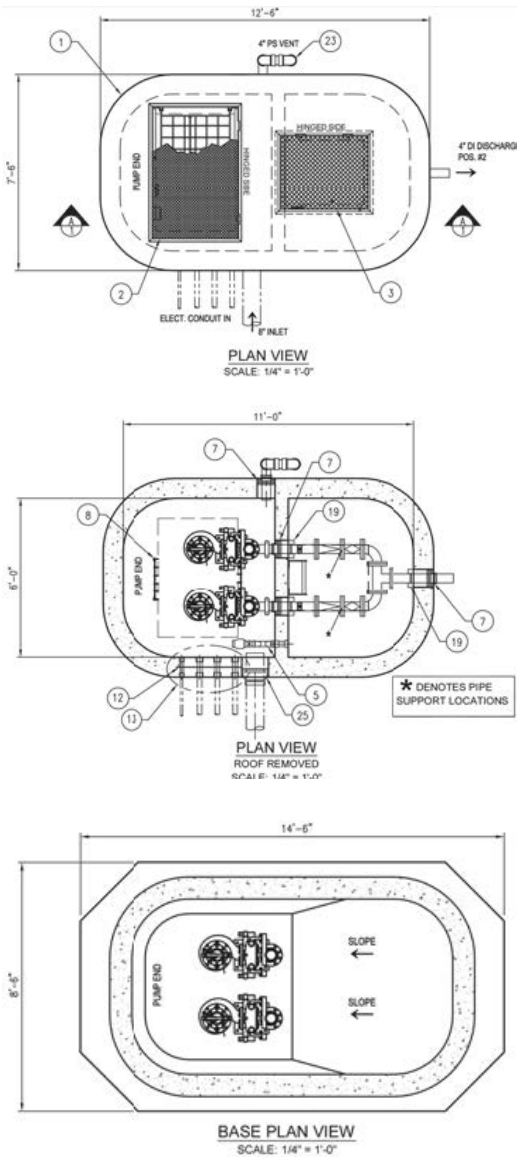
Matt Dobroskey

**Oldcastle Infrastructure’s OneLift continues to provide customers with beneficial solutions, high quality construction, and rapid supply at an overall cost savings.**

expansion requirements of needing to maximize holding capacity within a very small area of land located adjacent to the hotel portion of the complex. The small footprint provided by Oldcastle Infrastructure’s OneLift pump station and the capability to provide the required working volume and emergency storage was just the solution in the small space available.

The OneLift Pump Station is designed with an integral valve vault built into the unused top portion of the wet well, yielding a single-structure product, solving the problems of differential settlement found with the conventional 2-structure systems. In addition; the single-structure design, pre-assembled and ready for installation, significantly reduces the product footprint for sites such as Spooky Nook Sports with tight area restrictions. The manufacturing schedule of the OneLift was also a benefit to Ashlin Woods, the general contractor. The standard design and stock castings allowed Oldcastle Infrastructure to deliver the pump station just 6-weeks after release for production.

As this was the second station provided to this project by Oldcastle Infrastructure in as many years, the owner felt comfortable with the product. The owner wanted consistency at the sports complex and liked the quality and benefits of the One-Lift pump station. The first was installed during the initial construction of the sports complex in 2013 to service the needs of sewage transfer for a portion of the indoor complex and the outside soccer and field hockey rest rooms.



## OLDCASTLE INFRASTRUCTURE PRODUCTS USED

Qty (1) - RC611 Onelift pump station;  
 25-foot-10-inch deep  
 468 gallon per vertical foot

## USE OF PRODUCT

Sewage pump station to serve hotel facility with 135 rooms, bar & restaurant.

## WHY SELECTED

The owner already had a Onelift station on site servicing another part of the facility. They wanted to maintain consistency. Also, the limited space for the sewage pump station made it an ideal fit for a Onelift pump station.

## DATE OF INSTALLATION

March 4, 2015

## INNOVATION

Single Structure design

The factory built Onelift pump station offers a monolithically cast valve vault, in what is typically an unused portion of the pump station. This results in a significantly smaller footprint - up to 50% smaller than conventional 2 structure pump stations - allowing it to fit tight sites. The innovative shape and structural design provides ample space for the interior valve vault, while increasing workable system volumes and decreasing the depth of the excavation. The single structure of the Onelift pump station eliminates any potential differential settlement issues, allows for a quick and easy installation by eliminating the typical two-tier excavation of conventional stations, and is proven to be a cost effective method of providing a high quality pump station solution with rapid and reliable delivery. With the Onelift pump station you get fast turnaround time on submittals; which include standard structural and mechanical components.

**Wastewater pump station to serve hotel facility with 130 rooms, bar & restaurant**

**You can depend on the name and quality of Oldcastle Infrastructure**

## About Oldcastle Infrastructure

Oldcastle Infrastructure, A CRH Company, is the leading provider of building materials, products and services for infrastructure projects to several market sectors nationwide, including: Building Structures, Communications, Energy, Transportation and Water.

## For More Information Contact:

### Oldcastle Infrastructure

Phone: 888.65.227

Address: 8392 Riverview Parkway, Littleton, CO 80120

[oldcastleinfrastructure.com](http://oldcastleinfrastructure.com)