



RENO COUNTY CORRECTIONAL FACILITY

Manufacture and Installation of 120 Precast Concrete Prison Cells

Hutchinson, Kansas

This project entailed the construction of a new 75,000 square foot single story correctional facility for the County of Reno located in Hutchinson, Kansas. The \$21,000,000 new correctional facility has a capacity for 250 inmates ranging from minimum to maximum security and includes special needs units, a kitchen, and medical area which contains two negative-pressure isolation cells to prevent the spread of airborne diseases, and a work release area.

The new jail is designed so that guards can have a direct line of sight into cells surrounding a secure control station from

which the officers can electronically lock and unlock doors. A maintenance corridor along the outer perimeter of the cellblock will allow maintenance workers to repair plumbing and other systems without entering the cells. The design also allows for the easy addition of another 40-bed cellblock when it is needed in the future.

THE CHALLENGE

J E Dunn Construction, the general contractor, and RENO County chose precast modular technology as the desired method of construction for the housing units and awarded the precast concrete cell contract

DESIGN & CONSTRUCTION TEAM

General Contractor

J E Dunn Construction

Project Manager: Kyle Quigley

Owner

Reno County, Kansas

Architect

Treanor Architects (HQ-Lawrence, KS)

Project Architect

Jeff Lane

Precast Manufacturing Plant

Oldcastle Infrastructure - TOPEKA, Kan.

Oldcastle Infrastructure Modular - Precast Concrete Cell / building components contract award and Project Management



“Once the precast cells are dropped into place, they are done,”

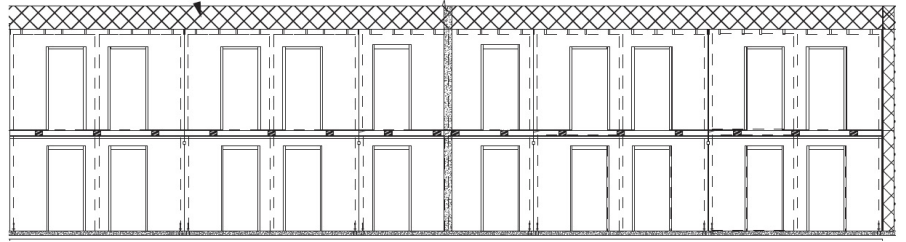
Shawn McClay, Reno County Jail Captain
August 8, 2014, Hutchinson news article

to Oldcastle Infrastructure Modular. The prefabricated concrete cell modules, equaling 120 rear chase jail cells, were manufactured at the Oldcastle Infrastructure -Topeka, KS plant and shipped to the job site. “Once the precast cells are dropped into place, they are done,” said Shawn McClay, the new Reno County Jail Captain, in an August 8, 2014 Hutchinson news article.

Oldcastle Infrastructure Modular and Oldcastle Infrastructure -Topeka manufactured, outfitted, and shipped the prefabricated cells. The quantity of precast cells was comprised of 64 Modules (56 double mods, 8 singles), 120 Cells, (80 double occupancy, 40 single occupancy), 200 beds.

The 12 foot 9 inch by 7 foot, two-man rear chase precast cells were stacked two high. The interiors of the cells were painted and outfitted with fixtures: two beds (for two-man cells), a table, sink, toilet, and four (combo) shelves with breakaway hooks for clothing and towels. Additionally, the plumbing and electricity are already connected to the individual cells.

Oldcastle Infrastructure Modular completed the erection of all 64 cell modules in only four days. The lower level cells have a monolithically cast balcony acting as the walkway for the cells stacked above. The rear chase allows for a corridor along the outer perimeter of the cellblock for maintenance workers.



Prison Cell Building Elevation



A maintenance corridor along the outer perimeter of the cell-block will allow maintenance workers to repair plumbing and other systems without entering the cells.

OLDCASTLE PRECAST PRODUCT USED

- (40) General/Female Population Cell
- (10) Handicap Accessible, General/Female Population Cell
- (50) General/Female Population Cell w/integral ceiling slab.
- (8) Maximum/Special Management Population Cell
- (2) Handicap Accessible, Maximum/Special Management Population Cell
- (10) Maximum/Special Management Population Cell

Each Rear Chase precast cell has integral ceiling/mezzanine floor slab and 5' wide mezzanine balcony at full width of cell.

PRODUCTION DURATION

5/8/14 through 8/13/14 which was the last pour.

CELLS WERE ERECTED

8/20/2014 thru 8/25/2014 (four working days, W-F and Monday)

Use of Products: Construction of 29,000 square feet of inmate housing units

WHY SELECTED

Fully Out-fitted precast concrete prison cells reduced environmental impact, provided rapid construction, improved constructability, increased quality, and lowered life-cycle costs. Constructing the facility in this manner provided the most efficient and durable solution for Reno County.

You can depend on the name and quality of Oldcastle Infrastructure

About Oldcastle Infrastructure

Oldcastle Infrastructure, A CRH Company, is the leading provider of building materials, products and services for infrastructure projects to several market sectors nationwide, including: Building Structures, Communications, Energy, Transportation and Water.

For More Information Contact:

Oldcastle Infrastructure

Phone: 215.257.2255

Address: 200 Keystone Drive, Telford, PA 18969

oldcastleinfrastructure.com