

ONELIFT RC509 PUMP STATION

Used to Maximize Holding Capacity at
University of Arizona \$100M Cancer Center
Phoenix, AZ

University of Arizona \$100 million Cancer Center at Dignity Health St. Joseph's Hospital and Medical Center clinic. As a National Cancer Institute - designated comprehensive cancer center, the six-story, 230,000 sf building provides chemotherapy, infusion, radiation oncology, and diagnostic imaging. St. Joseph's Hospital and Dignity Health will operate the facility as well as leasing space in it.

THE CHALLENGE

Late placement of electrical utilities prevented the building from using a gravity drain. The shape of the basin was of particular interest because of the extra per



foot storage volume. Also, there was very little room to fit the station.

The OneLift pump station was the contractor's product of choice due to the speed in product delivery and installation, plus it was specified in the bid.

DESIGN & CONSTRUCTION TEAM

Owner

University of Arizona

Distributor

James Cook & Hobson (JCH), Phoenix, AZ

Design Engineer

Dibble Engineering, Phoenix, Ariz.



Oldcastle Infrastructure's OneLift continues to provide customers with beneficial solutions, high quality construction, and rapid supply at an overall cost savings.

Oldcastle Infrastructure's OneLift pump station is installed between the building and sidewalk on a very busy street in downtown Phoenix.

The OneLift submersible pump station with integral valve vault was pre-assembled as a complete package, prior to delivery, to ensure the proper fit for concrete and all components. Oldcastle Infrastructure incorporated and pre-installed all equipment in their factory, minimizing re-assembly time and potential problems in the field.

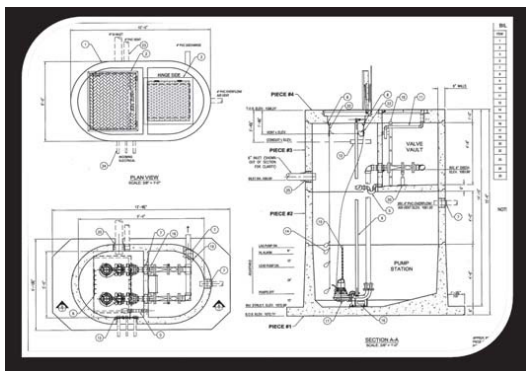
The installation took about 2-1/2 hours and every one was very pleased with the results of this new system. The contractor also mentioned that they saved time and money with the OneLift in lieu of building from scratch.

PRECAST STRUCTURE

OneLift Model RC509x1410-0-H20-4P1-0B pump station package with Integral valve vault, interior fillet and exterior anti-foatation collar: Overall exterior height: 15'-6"

OLDCASTLE INFRASTRUCTURE PRODUCTS USED

OneLift Model RC509x1410-0-H20-4P1-0B pump station package. Integral valve vault, interior fillet and exterior anti-foatation collar: Overall exterior height: 15'-6".
Cored opening and MH boot for 4" incoming air vent/emergency overflow.



Product of choice due to speed of product delivery & installation.

**OneLift Model
RC509x1410-0-H20-4P1-0B
pump station.**

STANDARD EQUIPMENT INCLUDED

- Installation of (2) submersible sewage pump base elbows
- 4" Interior SCH80 PVC discharge piping, fittings and SS hardware for flange packs as required to common pump station discharge (ending plain-end approx. 12" outside of station).
- (2) Flanged check valves (L&W), epoxy coated
- (2) Flanged plug valves w/lever operator, epoxy coated
- (2) Galvanized floor pipe stands in valve vault
- (1) Valve vault drain w/trap & back water valves to pump station
- (1) Wall-mounted aluminum ladder in valve vault
- (1) Manhole boots as required for discharge piping Manhole boot(s) as required for inlet(s)
- (1) 30" x 36" aluminum valve vault access hatch
- (1) 1 1/2" SCH 40 PVC hatch drain from valve vault hatch to pump station
- (1) 30" x 48" aluminum pump access hatch with safety grating,
- (2) Sets 304 Stainless steel pump removal guide rails, SCH40 (upper/intermediate guide brackets supplied with base elbows)
- 4-Gang electrical coupling access for incoming conduit from control panel
- (1) 4" glue-fitting access for PVC passive vent intake piping run underground to intake area. UG vent-run

INNOVATION

Single Structure design

The factory built OneLift pump station offers a monolithically cast valve vault, in what is typically an unused portion of the pump station. This results in a significantly smaller footprint - up to 50% smaller than conventional 2 structure pump stations - allowing it to fit tight sites. The innovative shape and structural design provides ample space for the interior valve vault, while increasing workable system volumes and decreasing the depth of the excavation. The single structure of the OneLift pump station eliminates any potential differential settlement issues, allows for a quick and easy installation by eliminating the typical two-tier excavation of conventional stations, and is proven to be a cost effective method of providing a high quality pump station solution with rapid and reliable delivery. With the OneLift pump station you get fast turnaround time on submittals; which include standard structural and mechanical components.

You can depend on the name and quality of Oldcastle Infrastructure

About Oldcastle Infrastructure

Oldcastle Infrastructure, A CRH Company, is the leading provider of building materials, products and services for infrastructure projects to several market sectors nationwide, including: Building Structures, Communications, Energy, Transportation and Water.

For More Information Contact:

Oldcastle Infrastructure

Phone: 888.965.3227

Address: 8392 Riverview Parkway, Littleton, CO 80120
oldcastleinfrastructure.com