

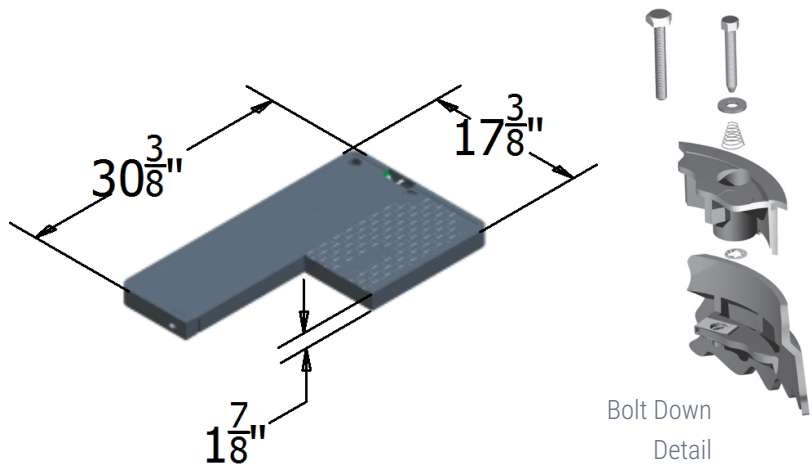
1730-24

CARSON® Spec Grade

COVER

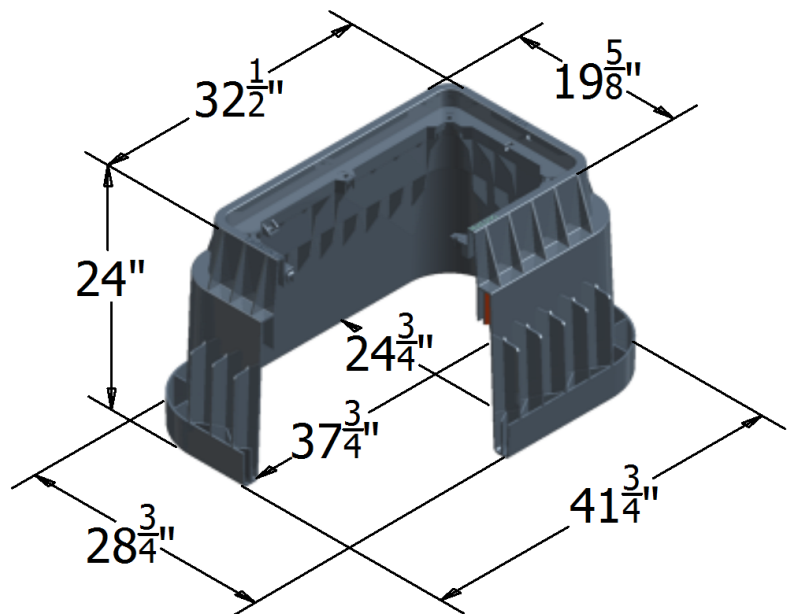
Style:	Flush
Material:	HDPE
Model:	17" x 30"
Weight:	10 lbs
Std. Fasteners:	3/8" Hex Bolt
Options:	Logos and Special Markings
Surface:	Skid Resistant & Marked
Performance:	Pedestrian, ASTM C857, WUC 3.6

Cover comes standard with permanent markings for manufacturer and model size.



BODY

Material:	HDPE
Model:	17" x 30"
Weight:	24" Depth: 52 lbs
Wall Type:	Flared
Mouseholes:	0
Performance:	Pedestrian, ASTM C857, WUC 3.6



LOAD RATING / NOTES



LIGHT DUTY
PEDESTRIAN / GREENBELT

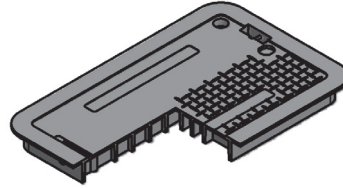
For use in non-vehicular traffic situations only.
Weights and dimensions may vary slightly.
Actual load rating is determined by the box
and cover combination.

1730-24

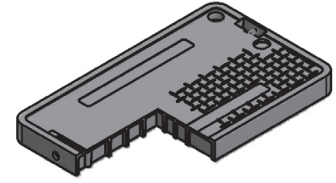
CARSON® Spec Grade

COVER OPTIONS

HDPE, T-Cover Solid
HDPE, Flush Solid
HDPE, Flush with Plastic Reader Door
HDPE, Flush with Cast Iron Reader Door



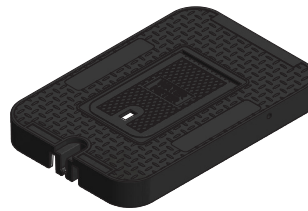
T-Cover Solid



Flush Solid

COLOR OPTIONS

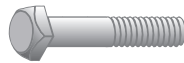
Cover: Black, Green, Gray, Tan, Purple
Body: Black, Green, Gray, Tan, Purple



Reader Door Detail

FASTENER OPTIONS

Hex Head Bolt (A)
Penta Head Bolt (B)
Penta Head Coil Thread Bolt (B)
Oldcastle Vandal Resistant Bolt (C)
Captive Bolt Retainer
Drop-N-Lock™



Standard Thread



A



B



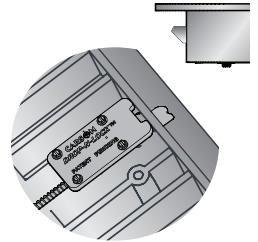
C



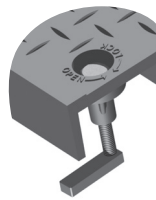
Coil Thread



Bolt Retainer
(for standard thread)



Drop-N-Lock
(T-Cover only)



L Bolt Detail



EMS Marker

ADD ON OPTIONS

AMR Friendly Solutions
Touch Read Hole
EMS Marker
Racking Provision

WARNING: Cancer - www.P65Warnings.ca.gov

All information contained on this sheet is current at the time of publication.
Oldcastle reserves the right to discontinue or update product information without notice.

Revision 11/30/18
© 2018 Oldcastle Infrastructure