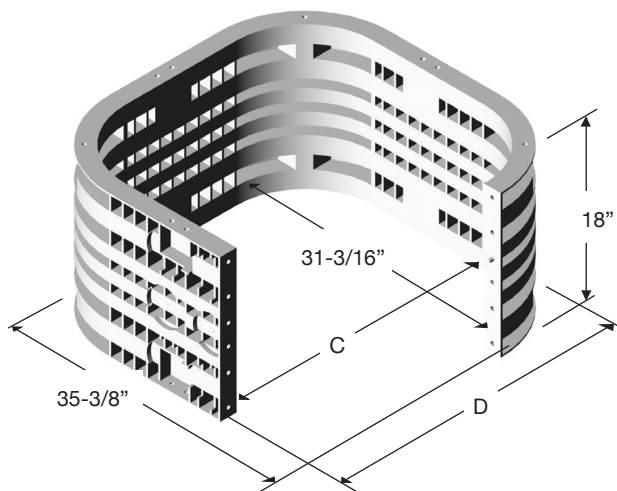


Model	B	C	D
2424	26.4"	31.4"	35.4"
2436	38.0"	43.0"	47.0"
2448	50.3"	55.25"	59.4"
2460	61.9"	66.9"	71"



COVER


Style: Flush
Material: HDPE
Model / Weight: 24" x 24" / 10.3 lbs
24" x 36" / 15.5 lbs
24" x 48" / 20.8 lbs
24" x 60" / 26.0 lbs
Std. Fasteners: 3/8" Hex Bolt
Options: Logos and Special Markings
Surface: Skid Resistant & Marked*
Performance: Pedestrian, ASTM C857, WUC 3.6,

BODY

Material: HDPE
Model / Weight: 24" x 24" / 32.0 lbs
24" x 36" / 39.5 lbs
24" x 48" / 47.5 lbs
24" x 60" / 55.3 lbs
Depth: 18"
Wall Type: Flared
Performance: Pedestrian, ASTM C857, WUC 3.6,

EXTENSION

Material: HDPE
Models: 24x24, 24x36, 24x48, 24x60
Depths: 6", 12", and 18"
Wall Type: Straight
Performance: Pedestrian, ASTM C857, WUC 3.6,

 Light Duty:
Pedestrian/Greenbelt

For use in non-vehicular traffic situations only.

Actual load rating is determined by the box and cover combination.

Weights and dimensions may vary slightly.

Based upon lid and body combination, this unit can be Tier 15 or Tier 22.
Cover comes standard with permanent markings for manufacturer, load rating, model size and manufacturing location.

Revision 10/2017

©2017 Oldcastle, Inc.

OPTIONS

AVAILABLE PLASTIC COVERS:

Flush Solid (Standard)
T Cover Solid

AVAILABLE PLASTIC COVER COLORS:

Black (Standard), Green, Grey, Tan, Purple

LOCKING OPTIONS FOR PLASTIC COVERS:

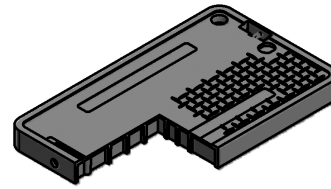
Bolt Down Feature
Drop-N-Lock™

AVAILABLE BODY COLORS:

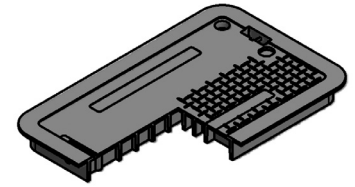
Black (Standard), Green, Grey, Tan, Purple

ADD ON OPTIONS:

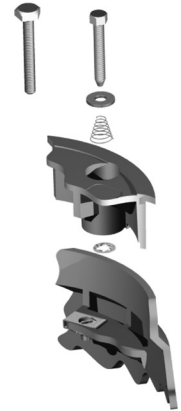
EMS Marker
Racking Provision



Flush Solid Cover



T Solid Cover



EMS Marker

Bolt Down Detail

RAW MATERIAL SPECIFICATIONS

Material Property	ASTM Test Method	Typical Value¹
Type, Class, Category	D 1248	III, A, 3
Density, g/cm³	D 1505	0.950 min., not to exceed 0.965
Tensile Strength, at break, psi	D 638	3,000 to 4,400
Elongation, at break, %	D 638	400
Tensile Impact, ft-lb/in²	D 1822	27
Flexural Modulus, psi	D 790	120,000 min., not to exceed 240,000
Low Temperature Brittleness, F50, at °C	D 746	<-76
Hardness, Shore D	D 2240	66
Deflection Temperature, at 66 psi, °F	D 648	150° min., not to exceed 200°
Electrical Dielectric Strength, V/mil	D 149	400 min., not to exceed 600
Molded Product		
Chemical Resistance	D 543	Very Resistant
Water Absorption	D 570	Less than 1% weight change

¹The values listed for physical property measurements are nominal values only.
Certain physical property measurements are subject to variations consistent with the test methods and are within a generally accepted range for such values.

PRODUCT LOAD RATING



Light Duty: Pedestrian/Greenbelt Applications

For use in non-vehicular traffic situations only. Actual load rating is determined by the box and cover combination.

NOTES

Actual load rating is determined by the box and cover combination.
Weights and dimensions may vary slightly