

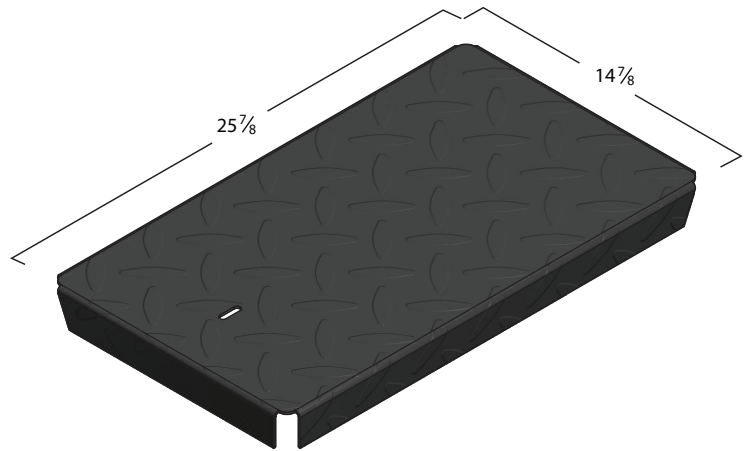
MAG #3

CHRISTY®

COVER

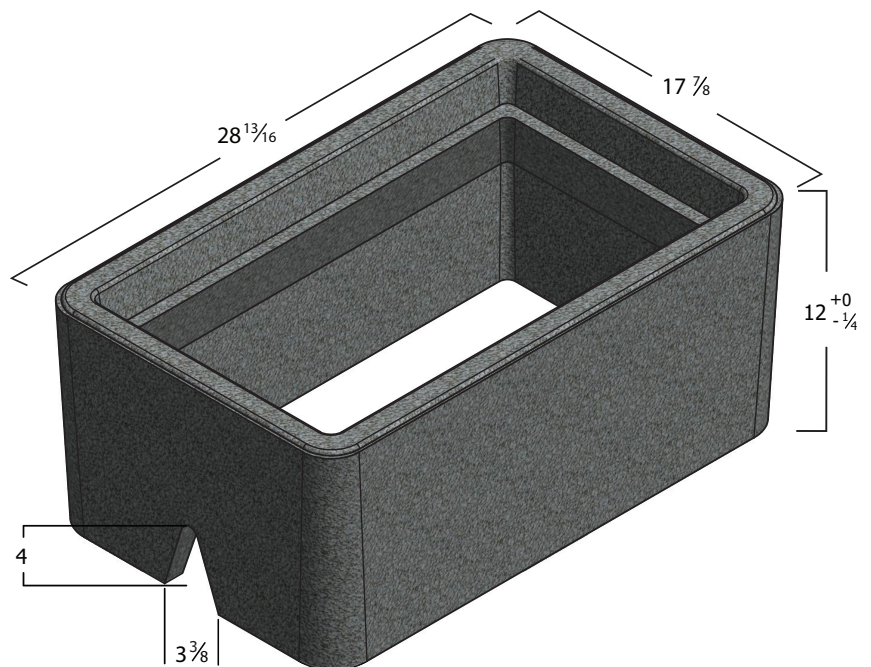
Style:	Flush
Material:	Steel with Rust Inhibitor Paint
Model:	MAG #3
Weight:	14 lbs
Surface:	Skid Resistant*
Coefficient of Friction:	>0.6 ASTM 1028
Performance:	ASTM C 857, WUC 3.6

Polymer Concrete covers comes standard with permanent markings for manufacturer, load rating, model size and manufacturing location.



BODY

Material:	Reinforced Concrete
Model:	MAG #3
Weight:	130 lbs
Wall Type:	Straight
Mouseholes:	2
Performance:	ASTM C 857, WUC 3.6



LOAD RATING / NOTES



LIGHT DUTY
PEDESTRIAN / GREENBELT

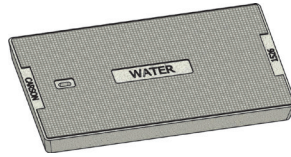
For use in non-vehicular traffic situations only.
Weights and dimensions may vary slightly.
Actual load rating is determined by the box
and cover combination.

MAG #3

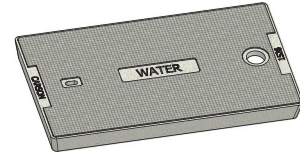
CHRISTY®

COVER OPTIONS

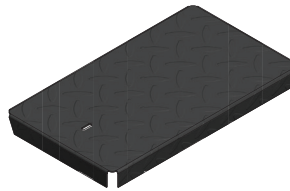
Polymer Concrete, Flush Solid
Polymer Concrete, Flush with Touch Read
Steel, Solid
Steel, with Touch Read
Steel, with Welded Corners



Polymer Concrete
Flush Solid



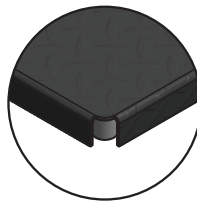
Polymer Concrete
with Touch Read



Steel
Flush Solid



Steel
with Touch Read



Welded Corner
Detail

 **WARNING:** Cancer and Reproductive Harm - www.P65Warnings.ca.gov

All information contained on this sheet is current at the time of publication.
Oldcastle reserves the right to discontinue or update product information without notice.

Revision 12/06/18
© 2018 Oldcastle Infrastructure