

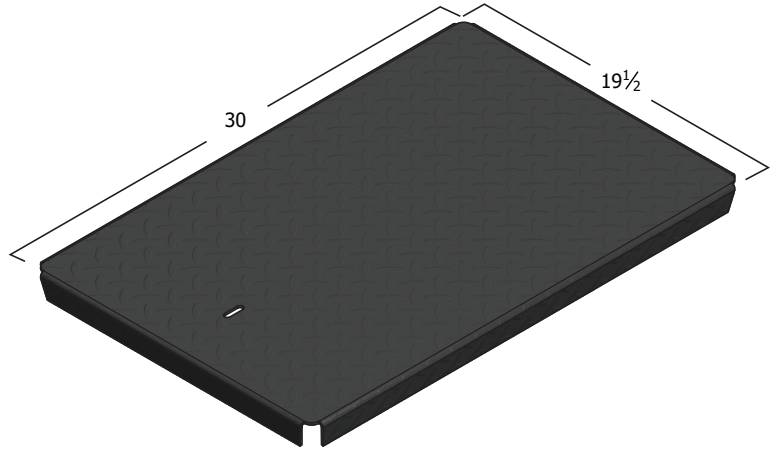
# MAG #4

CHRISTY®

## COVER

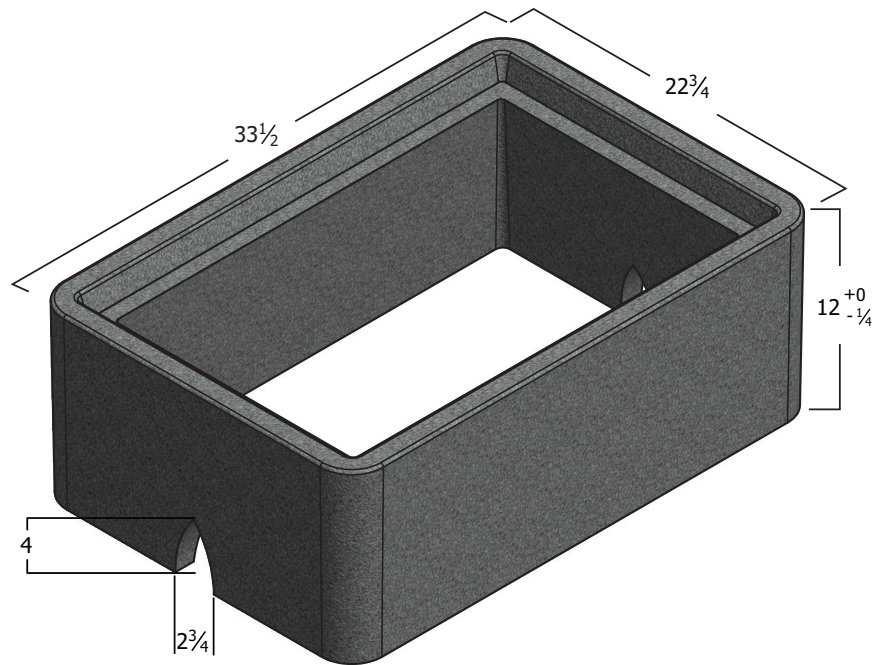
Style:	Flush
Material:	Steel with Rust Inhibitor Paint
Model:	MAG #4
Weight:	28 lbs
Surface:	Skid Resistant*
Coefficient of Friction:	>0.6 ASTM 1028
Performance:	ASTM C 857, WUC 3.6

Polymer Concrete covers comes standard with permanent markings for manufacturer, load rating, model size and manufacturing location.



## BODY

Material:	Reinforced Concrete
Model:	MAG #4
Weight:	203 lbs
Wall Type:	Straight
Mouseholes:	2
Performance:	ASTM C 857, WUC 3.6



## LOAD RATING / NOTES



LIGHT DUTY  
PEDESTRIAN / GREENBELT

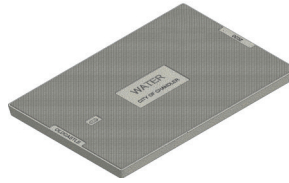
For use in non-vehicular traffic situations only.  
Weights and dimensions may vary slightly.  
Actual load rating is determined by the box  
and cover combination.

# MAG #4

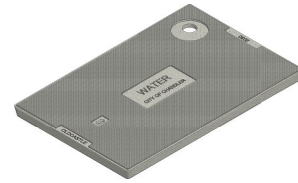
CHRISTY®

## COVER OPTIONS

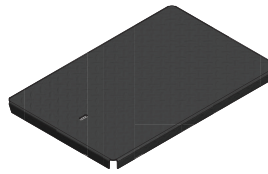
Polymer Concrete, Flush Solid  
Polymer Concrete, Flush with Touch Read  
Steel, Solid  
Steel, with Touch Read  
Steel, with Welded Corners



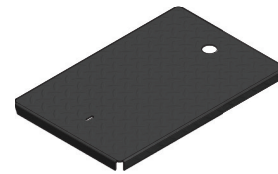
Polymer Concrete  
Flush Solid



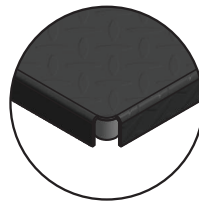
Polymer Concrete  
with Touch Read



Steel  
Flush Solid



Steel  
with Touch Read



Welded Corner  
Detail

 **WARNING:** Cancer and Reproductive Harm - [www.P65Warnings.ca.gov](http://www.P65Warnings.ca.gov)

All information contained on this sheet is current at the time of publication.  
Oldcastle reserves the right to discontinue or update product information without notice.

Revision 12/06/18  
© 2018 Oldcastle Infrastructure