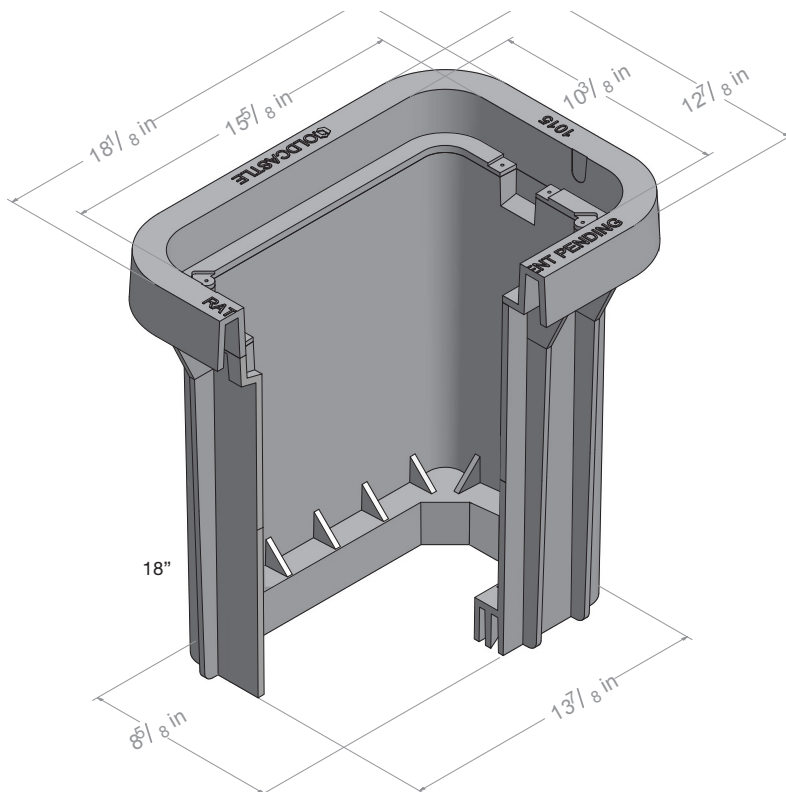


12" BODY

Material:	Polyolefin Blend
Model:	10" x 15"
Depth:	12"
Weight:	10.8 lbs
Wall Type:	Straight
Mouseholes:	0
Performance:	ANSI/SCTE-77, Tier 15 or Tier 22*



18" BODY

Material:	Polyolefin Blend
Model:	10" x 15"
Depth:	18"
Weight:	16 lbs
Wall Type:	Straight
Mouseholes:	0
Performance:	ANSI/SCTE-77, Tier 15



Medium Duty:
Incidental,
Non-deliberate Traffic



Heavy Duty: Incidental,
Non-deliberate Traffic

For use in non-vehicular traffic situations only.

Actual load rating is determined by the box and cover combination.

Weights and dimensions may vary slightly.

Based upon lid and body combination, this unit can be Tier 15 or Tier 22.

* T22 rating when paired with T22 polymer concrete lid.

Cover comes standard with permanent markings for manufacturer, load rating, model size and manufacturing location.

Revision 5/2018

©2018 Oldcastle, Inc.

OPTIONS

AVAILABLE POLYMER CONCRETE COVER:

Flush Solid

LOCKING OPTIONS FOR ALL COVERS:

Hex Head Bolt Down

Penta Head Bolt Down

Vandal Resistant Bolt Down

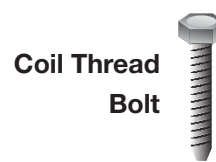
Hex Head Coil Thread Bolt

ADD ON OPTIONS:

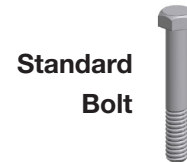
EMS Marker



Polymer
Concrete Cover



Coil Thread
Bolt



Standard
Bolt



Hex Head



Penta Head



Vandal
Resistant



EMS
Marker

**PRODUCT
LOAD RATING**



Medium Duty: Incident, Non-deliberate traffic

For use in non-vehicular traffic situations only. Actual load rating is determined by the box and cover combination.



Heavy Duty: Incident, Non-deliberate traffic

For use in non-vehicular traffic situations only. Actual load rating is determined by the box and cover combination.

NOTES

Actual load rating is determined by the box and cover combination.
Weights and dimensions may vary slightly