

## P52

### COVER:

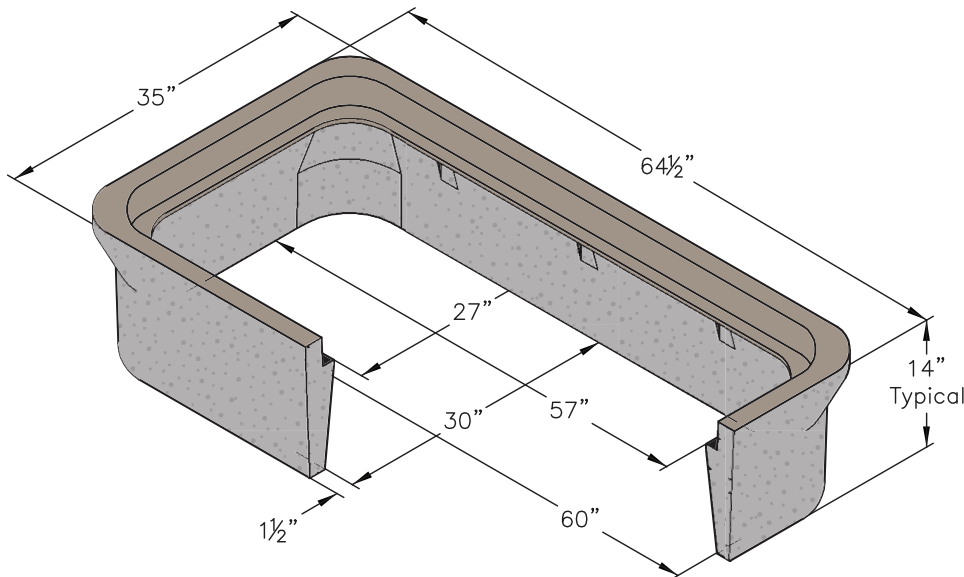
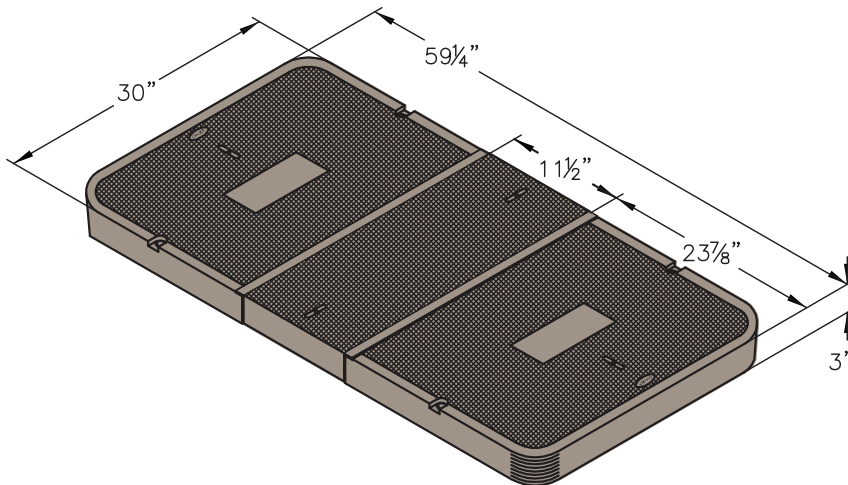
Style: Flush 3 Piece)  
Material: Reinforced Concrete  
Model: 30" x 48"  
Weight: 532 lbs  
Options: Special Markings  
Surface: Skid Resistant & Marked\*  
Coefficient of Friction: >0.6 ASTM 1028  
Performance: ASTM C 857, WUC 3.6

### BODY:

Material: Reinforced Concrete with Composite Cap  
Model: 30" x 48"  
Weight: 454 lbs  
Wall Type: Straight  
Performance: ASTM C 857, WUC 3.6

### EXTENSION:

Material: Reinforced Concrete  
Depth: 10"  
Weight: 308 lbs



Light Duty:  
Pedestrian Only

Actual load rating is determined by the box and cover combination.  
Weights and dimensions may vary slightly

Rev 12/2016 ©2016 Oldcastle, Inc.

Contact your Oldcastle Enclosure Solutions Distribution Center for specific information and additional options.

**P52**

**Options:**

**R-Series Covers:**

Flush (3 Piece)  
Bolt Down Locking Available

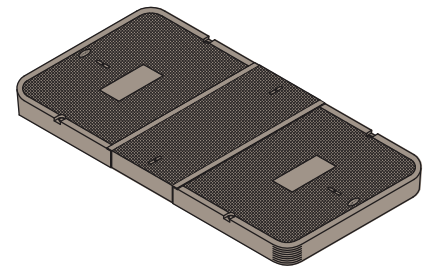
**Steel Checker Plate Covers:**

Flush (2 Piece)  
Galvanizing Available

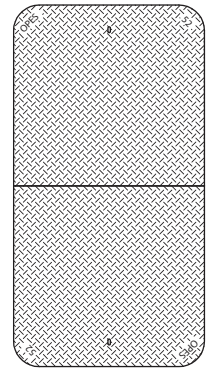
**Add On Options:**

EMS Marker  
Lid Gaskets\*

\*Lid Gaskets inhibit water flow into the box,  
they do not make Enclosure fully waterproof.



R-Series



Steel

**Product Load  
Rating:**



Light Duty : Pedestrian Only

**Note:**

Actual load rating is determined by the box and cover combination. Weights and dimensions may vary slightly  
All information contained on this sheet is current at the time of printing.  
Oldcastle Precast, Inc. reserves the right to discontinue or update product information without notice.



Rev 12/2016 ©2016 Oldcastle, Inc.