

## FL09

### Material & Style

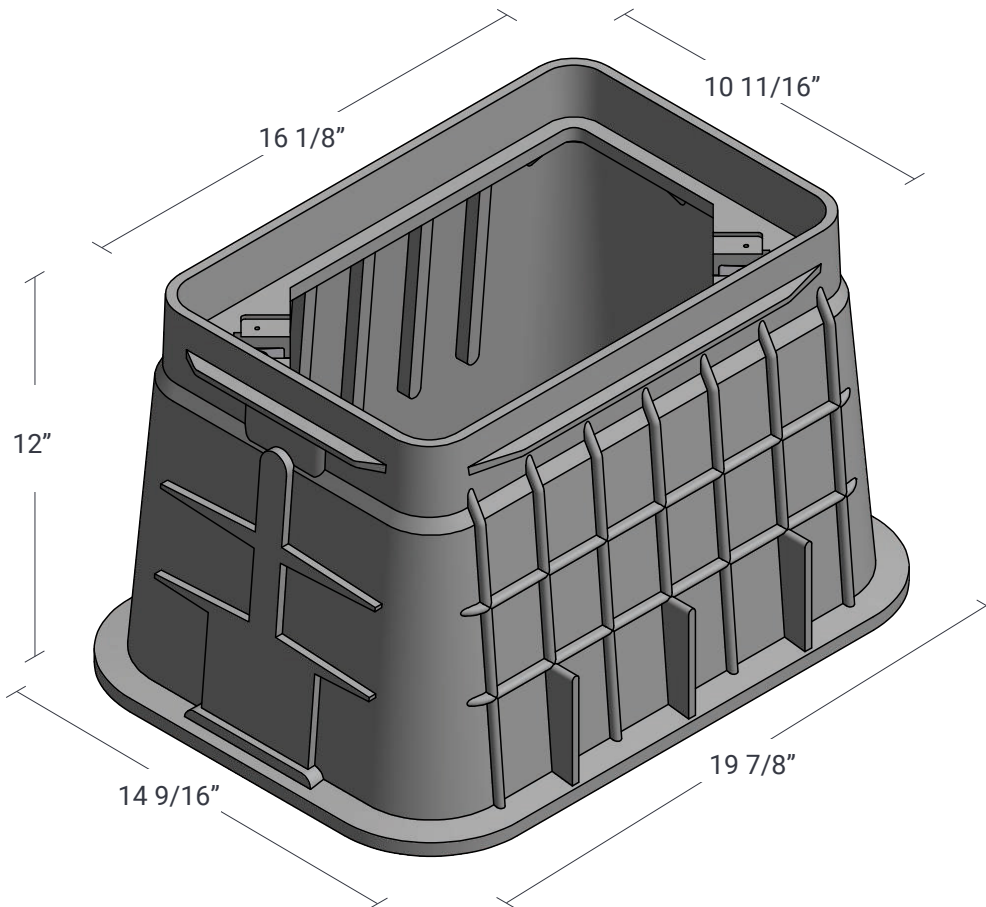
Composite

Flared Wall

### FL09 Body

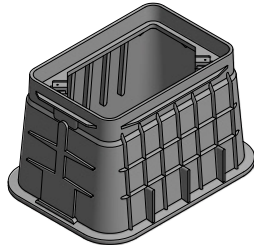
ANSI/SCTE-77, Tier 8

15 lbs



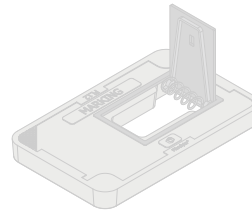
Medium Duty  
ANSI/SCTE TIER 8

For use in non-vehicular traffic situations only. Weights and dimensions may vary slightly. Actual load rating is determined by the box and cover combination.



## Options

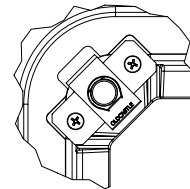
Bodies: • Mouseholes / Knockouts Optional



Available Covers: • Fibrelyte<sup>®</sup>, Flush Solid • Fibrelyte<sup>®</sup>, Flush w/ AMR • Fibrelyte<sup>®</sup>, Flush w/ Reader Door



Fasteners: • Hex Head - Standard or Coil Thread Bolt  
• Penta Head - Standard or Coil Thread Bolt  
• Oldcastle Vandal Resistant Bolt  
• Captive Bolt Retainer



• Detail: Bolt Down

Add On Options: • Logos and Special Markings

Product modifications, including but not limited to, cutting for conduit access, or “mouseholes” may alter ratings and product performance listed within this document unless stated otherwise.

All information contained on this sheet is current at the time of publication.

Oldcastle Infrastructure reserves the right to discontinue or update product information without notice.

© 2025 Oldcastle Infrastructure, Inc.