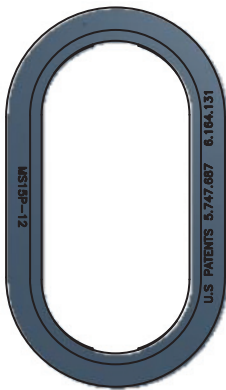
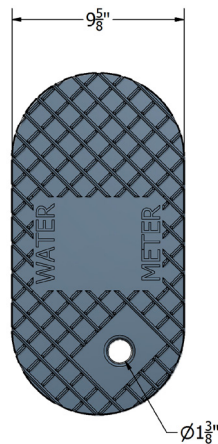
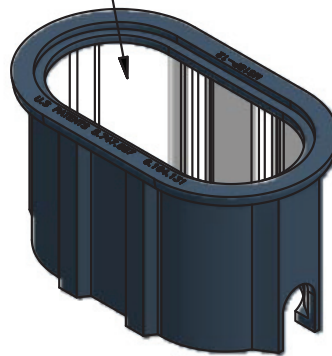


Heavywall
15P



White Interior



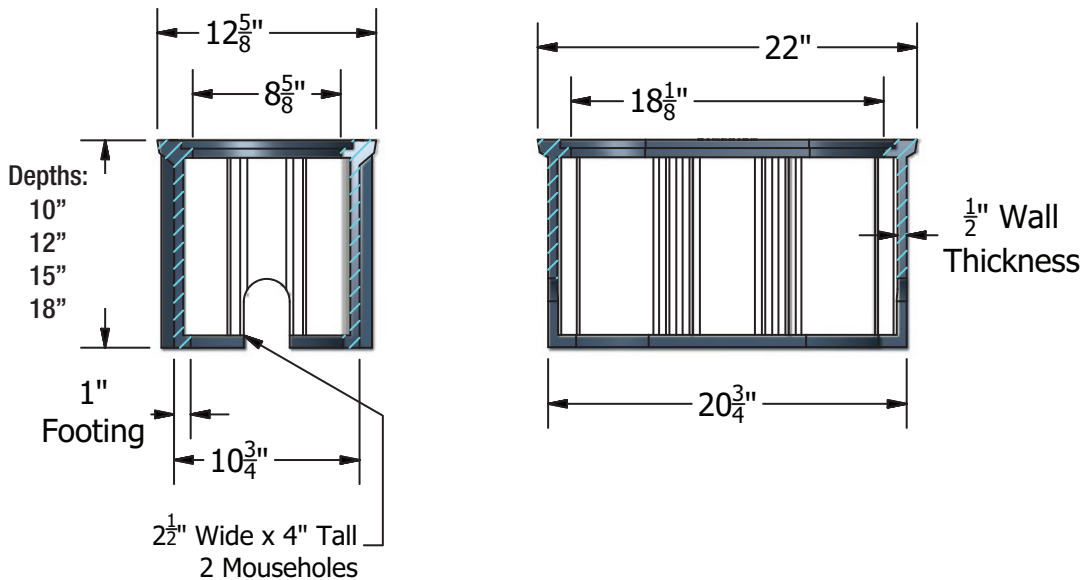
COVER:

Style: Flush
Material: Cast Iron
Weight: 19 lbs.
Options: Logos and Special Markings

BODY:

Material: Polyethylene Blend
Model: 13" x 22"
Weight: 10" Depth: 10 lbs
12" Depth: 12 lbs
15" Depth: 16 lbs
18" Depth: 20 lbs

Mouseholes: 2



Medium Duty:
Non-deliberate Traffic

For use in non-vehicular traffic situations only.

We do not recommend installation in concrete or asphalt.

Actual load rating is determined by the box and cover combination. Weights and dimensions may vary slightly.

*Cover comes standard with permanent markings for manufacturer, load rating, model size and manufacturing location.

Contact your Oldcastle Enclosure Solutions Distribution Center for specific information and additional options.

Heavywall
15P
Options:
Available Plastic Covers:

Flush Solid Cover

Available Cast Iron Covers:

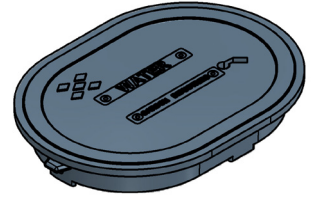
Flush Solid Cover

Add On Options for Plastic Covers:

Touch Read Hole

Add On Options for Cast Iron Covers:

Touch Read Hole


Raw Material Specifications:

- Meter Boxes are high-density Polyethylene, one-piece molded construction
- Wall thickness minimum .550"
- Vertical load rating minimum 15,000 lbs.
- Sidewall loading of 200 lb side load, applied with a 4" X 4" plate.
- Multi-layer wall construction
- Black exterior surface to provide UV protection
- Gray foaming for strength and insulating value
- White interior surface for ease of meter reading
- Manufactured by Oldcastle Precast Enclosure Solutions

Cast Iron Meter Ring and Lid Specifications:

- Made of cast iron conforming to ASTM A48 standards and marked with country of origin
- Coated with a factory applied water based asphalt paint
- Castings are ground smooth and cleaned by shot blasting, uniform quality, free from sand holes, shrinkage, cracks and other surface defects, with a dimensional tolerance of +/- 1/16" per foot based on the accepted foundry tolerances outlined in the Iron Castings Handbook published by the American Foundry Society.

Product Load Rating:


Medium Duty : Non-Deliberate Traffic

Note:

Actual load rating is determined by the box and cover combination. Weights and dimensions may vary slightly
All information contained on this sheet is current at the time of printing.
Oldcastle Precast, Inc. reserves the right to discontinue or update product information without notice.

