

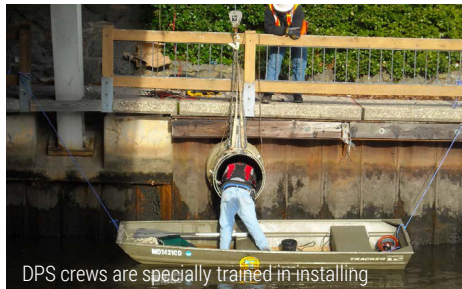


Wicomico River with floating debris

# WICOMICO RIVER CLEANS UP WITH NETTECH<sup>™</sup> GROSS POLLUTANT TRAPS

Salisbury, MD

The City of Salisbury, located in southeastern Maryland, is the county seat of Wicomico County and is also the largest city in Maryland's Eastern Shore region. It is the commercial hub of the Delmarva Peninsula and is sometimes called "the Crossroads of Delmarva". One of the focal points of the downtown area is a riverwalk along the Wicomico River which the city maintains. When the City of Salisbury decided to make an effort to clean-up the trash and debris flowing into the Wicomico River from the adjacent contributing watershed, they chose Oldcastle Infrastructure's NetTech<sup>™</sup> gross pollutant traps (GPT) and FloGard<sup>®</sup> +Plus



DPS crews are specially trained in installing

catch basin insert filters using a community development block grant.

In February 2011, Drainage Protection Systems (DPS), a division of Oldcastle Infrastructure, installed a 24" circular GPT,

## DESIGN & CONSTRUCTION TEAM

### Client

City of Salisbury, MD

### Project Coordinator

Bill Sterling  
Dept. of Public Works.

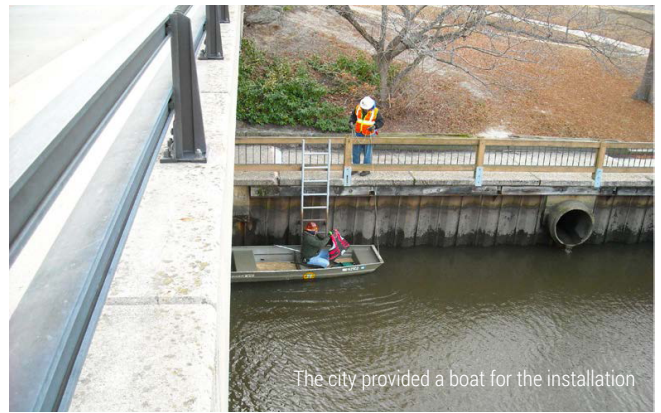
### Utility Contractor:

Drainage Protection Systems  
(DPS), a Division of Oldcastle Infrastructure

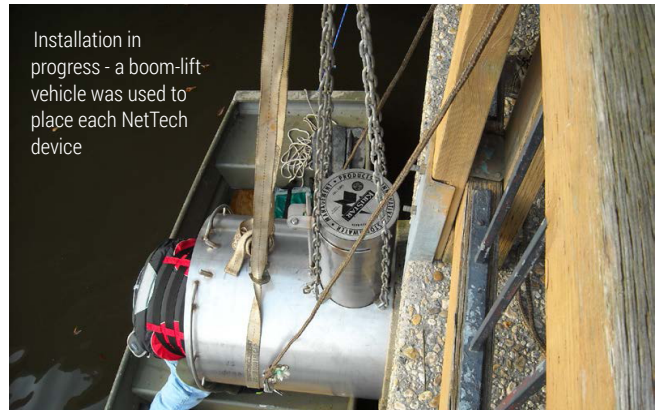
# Wicomico River Cleans Up with NetTech™ Gross Pollutant Traps Salisbury, MD



Preparing to unload NetTech unit



The city provided a boat for the installation



Installation in progress - a boom-lift-vehicle was used to place each NetTech device



NetTech installation complete and ready for use

## OLDCASTLE STORMWATER PRODUCTS INSTALLED:

24" & 36" Nettek devices, plus 30 Flogard Plus+ Catch Basin Insert Filters

attaching it to an existing 24" stormwater outfall pipe beneath the Division Street Bridge which is adjacent to the city's riverwalk. Then in September 2011, a 36" circular GPT was installed on a nearby outfall pipe. The NetTech device will capture trash and debris from the outfall and contain the contents until the city's maintenance crews pick-up and dispose of the debris. Once emptied, the netting device is reattached and the process begins anew.

The NetTech, an end-of-pipe treatment device, was selected by the city due to the conspicuous location of the outfalls. Not only is the location highly visible by local residents and adjacent property owners, thereby providing an immediate showcase of the captured debris, it also allows appropriate maintenance accessibility for debris collection and disposal.

## INSTALLATION ISSUES

The timing of the tidal-influenced Wicomico River had to be accounted for during installation due to the outfall pipe being partially submerged during high tide. Additionally, the upstream storm sewer system maintained a constant runoff through the pipe network, which had to be temporarily dewatered during the installation sequence.

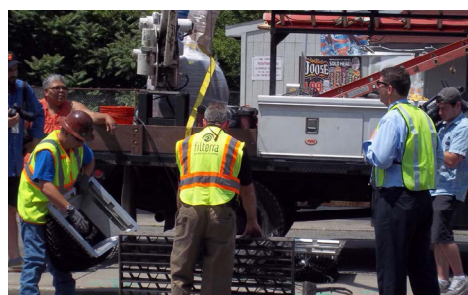
DPS accomplished this through the use of sandbags and a sump pump in the adjacent upstream manhole, thereby providing for a relatively dry installation environment. Furthermore, access for the installation had to be considered due to the river's proximity to the outfall. The city provided a boat to assist with the installation along the riverwalk, which was needed in conjunction with DPS's boom-lift vehicle. Traffic was controlled along



## Wicomico River Cleans Up with NetTech™ Gross Pollutant Traps Salisbury, MD



DPS crew installing FloGard +Plus catch basin insert filters along West Isabella Street



Salisbury Mayor watches as the FloGard +Plus catch basin insert filters are being installed

the Division Street Bridge during installation by the city, while DPS provided power access through a mobile generator which was necessary for properly securing each NetTech device to the outfall pipe. Total installation time took about four hours per unit.

### RESULTS

The two NetTech units had an immediate impact by drastically reducing the amount of trash and debris deposited into the Wicomico River, thereby providing an enhancement to the city's river beautification project. These installations were the first two completed portions of the city's overall stormwater master plan. In May 2012, the city contracted with DPS to install 30 FloGard +Plus catch basin insert filters within the watershed as well.

Though these are the first NetTech devices to be utilized in the Maryland Eastern Shore region, neighboring communities outside of Salisbury, including Talbot County and the City of Easton, have recently installed several NetTech units as well.

It is of the utmost importance to keep trash and debris out of our nation's waterways, keeping our water as clean as possible for current and future generations, and Oldcastle Infrastructure is helping city and county agencies accomplish this task, one step at a time.

### About Oldcastle Infrastructure

Oldcastle Infrastructure, A CRH Company, is the leading provider of building materials, products and services for infrastructure projects to several market sectors nationwide, including: Building Structures, Communications, Energy, Transportation and Water.

### For More Information Contact:

#### Oldcastle Infrastructure

Phone: 800.579.8819

Email: [contactstormwater@oldcastle.com](mailto:contactstormwater@oldcastle.com)  
[oldcastleinfrastructure.com](http://oldcastleinfrastructure.com)