



# WORLD'S LARGEST STORMCAPTURE® UNDERGROUND DETENTION SYSTEM

Coming to Southern California  
Lake Forest, CA

Bigger is better! Oldcastle Infrastructure is collaborating with site owner LSOC Portola LLCL, general contractor Landsea Holding Corporation and engineering firm Hunsaker & Associates to create one of the largest and deepest StormCapture® rainwater detention systems designed to date.

The massive structure includes a network of individual StormCapture modules arranged to create a vast underground precast concrete stormwater management system. The pre-engineered components allow for site-specific configurations while providing tremendous stormwater storage capacity in a smaller footprint.



Portola Center is a 195-acre community development, divided by Glenn Ranch Road into "Portola North" and "Portola South" in Lake Forest, California. The 95.5-acre Portola Center South community features both new single-family homes and mixed-use buildings. The community also features a 10,000-square-foot ground floor commercial

## DESIGN & CONSTRUCTION TEAM

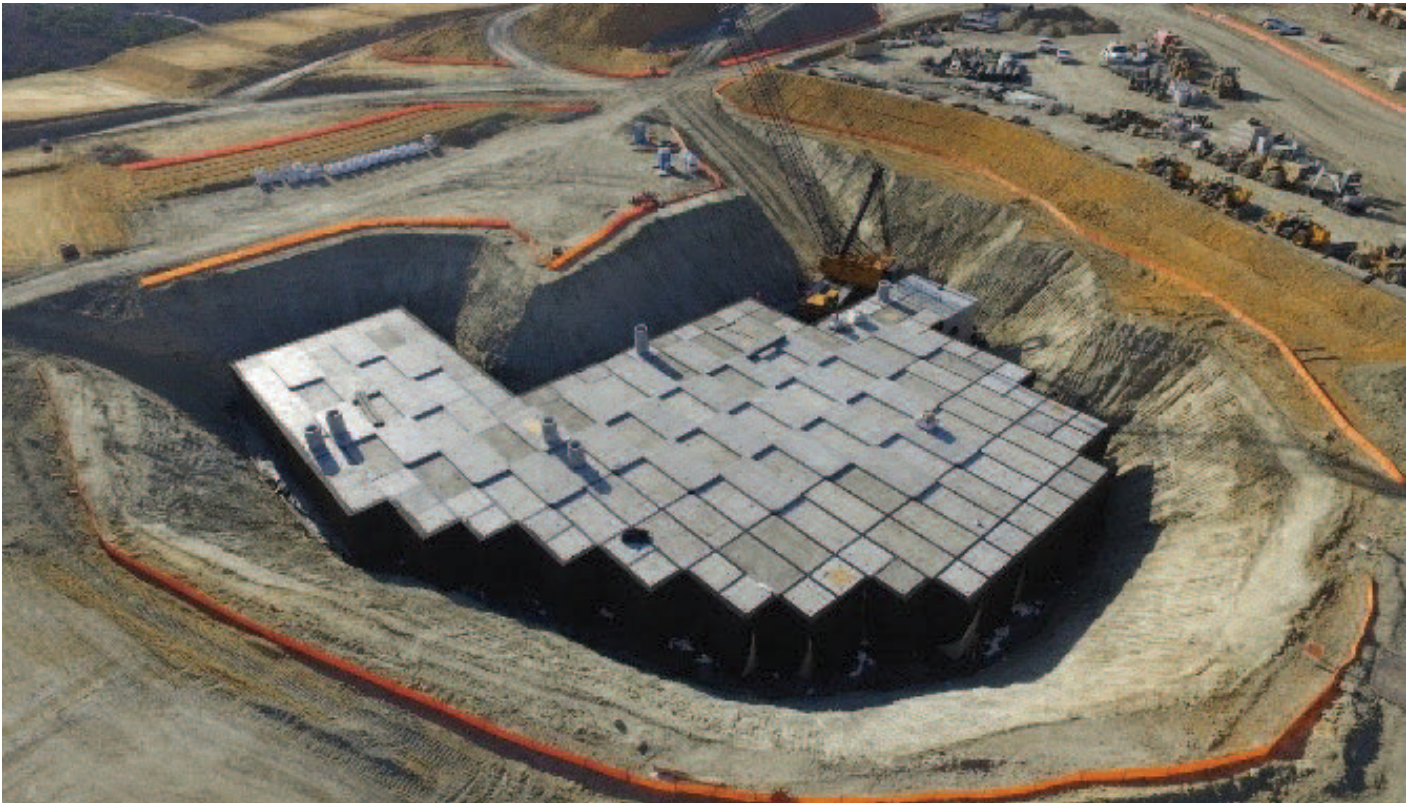
**Site Owner**  
LS-OC Portola LLCL

**General Contractor**  
Landsea Holding Corporation

**Engineer**  
Hunsaker & Associates

**Manufacturing Plant**  
Oldcastle Infrastructure  
Perris, CA

## World's Largest StormCapture® Underground Detention System Coming to Southern California, Lake Forest, CA



space as well as a five-acre public community park and perimeter trails.

The magnitude of this project and its increased impermeable areas made managing hydromodification (stormwater runoff) a top priority. Stormwater is managed throughout the project through ten separate "Basins", providing a total detention storage volume of 820,886 cubic feet (18.85 acre-feet). Basin No. 5, the first StormCapture detention system installed at Portola Center South, was designed to store 198,152 cubic feet (4.55 acre-feet) of stormwater, which can detain up to a 10-year storm event with an internal orifice designed to slowly

discharge the water volume to a downstream biofiltration system.

The Basin No.5 StormCapture system, manufactured at the Oldcastle Infrastructure plant in Perris, California, has an inside height of 14 feet and was designed to withstand 16-feet of backfill over the entire system. The system was fully encased with an impermeable geotextile liner. Along with the StormCapture detention system, Oldcastle Infrastructure plants in Southern California also manufactured and delivered large biofiltration units to address the water quality requirements for the project.

Shelby Hull, Director of Oldcastle Infrastructure's Stormwater for the Southwest Region stated, "Oldcastle Infrastructure is the perfect design partner for all stormwater needs, big and small. Our team of stormwater experts, design engineers and national manufacturing capabilities make Oldcastle Infrastructure the clear choice for developing custom solutions to meet the specific regulatory needs for projects like this. Unlike other companies that only design systems and then use third-party manufacturing, Oldcastle Infrastructure maintains control and ensures quality throughout the design, manufacturing, installation and life of the system."

### About Oldcastle Infrastructure

Oldcastle Infrastructure, A CRH Company, is the leading provider of building materials, products and services for infrastructure projects to several market sectors nationwide, including: Building Structures, Communications, Energy, Transportation and Water.

### For More Information Contact:

#### Oldcastle Infrastructure

Phone: 800.579.8819

Email: [contactstormwater@oldcastle.com](mailto:contactstormwater@oldcastle.com)  
[oldcastleinfrastructure.com](http://oldcastleinfrastructure.com)