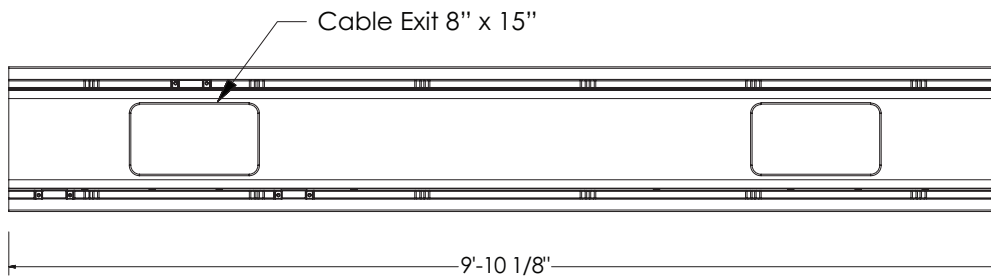


Plastibeton Cover

75 lbs

32,000 lb Axle Load

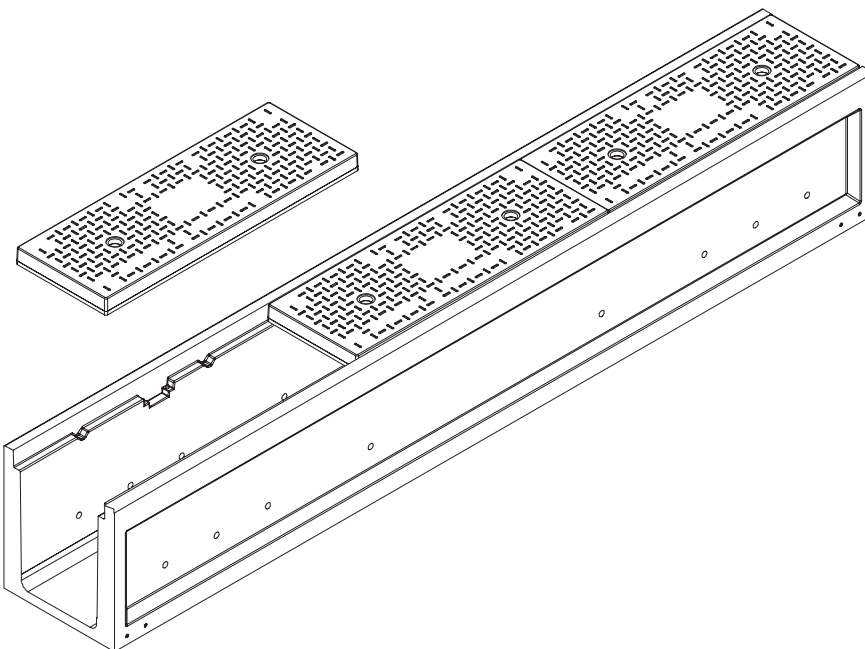
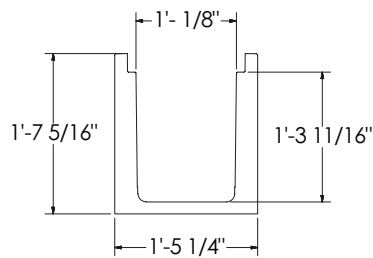


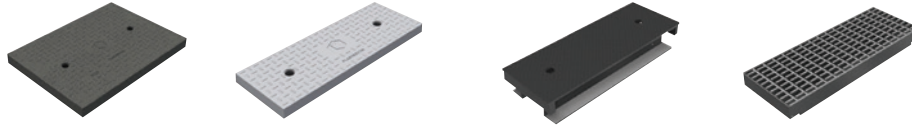
T1216 Trench

High Density Polymer
Concrete

897 lbs

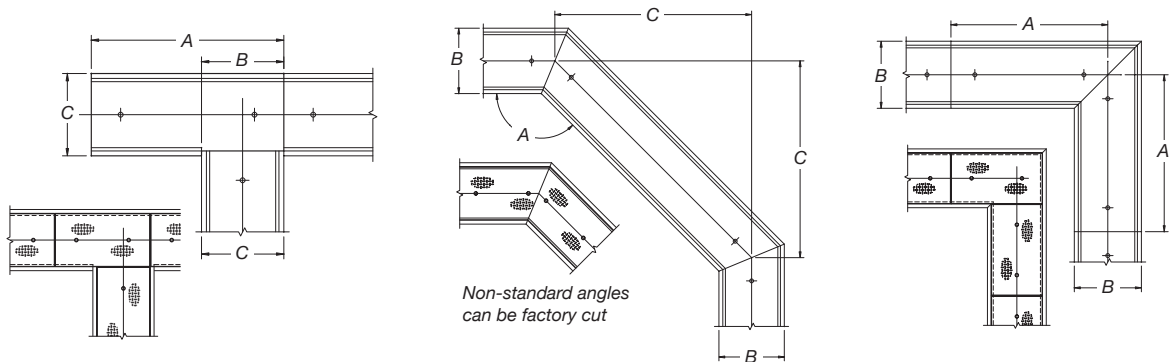
Solid Bottom Available





Options

Available Covers: • Plastibeton • Plastibeton HD • Steel • Grated Steel



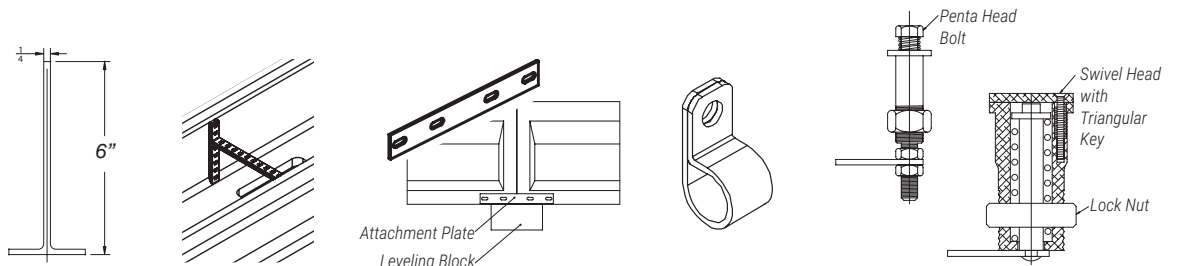
A	B	C
4'-11 1/16"	1'-5 1/2"	1'-5 1/4"

A	B	C
135°	1'-5 1/4"	3'-3 1/4"

A	B
4'-11 1/16"	1'-5 1/4"

Ring and Cover:
Custom configurations
are available

• "T" Connection • Horizontal Deviation • Right Angle



Add On Options

• Cable Divider • Unistrut • Attachment Plate • Cable Clips
- Galvanized
- Stainless
- Plastic • Locking
- Triangular Key
- Penta Bolt

WARNING: Cancer - www.P65Warnings.ca.gov

All information contained on this sheet is current at the time of publication.
Oldcastle reserves the right to discontinue or update product information without notice.

Revision 07/17/23

© 2023 Oldcastle Infrastructure, Inc.