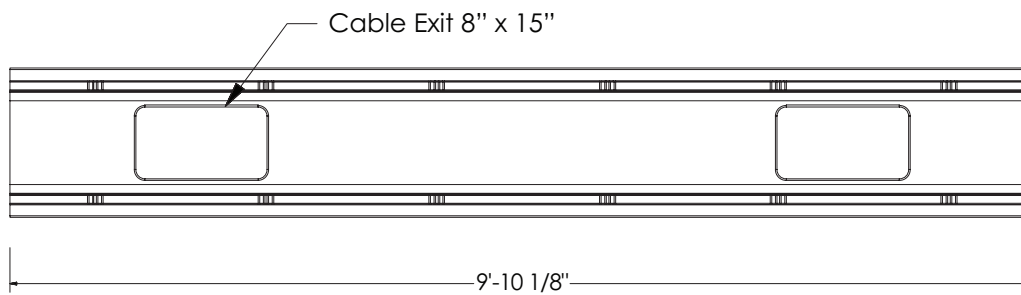


### Plastibeton Cover

75 lbs

32,000 lb Axle Load

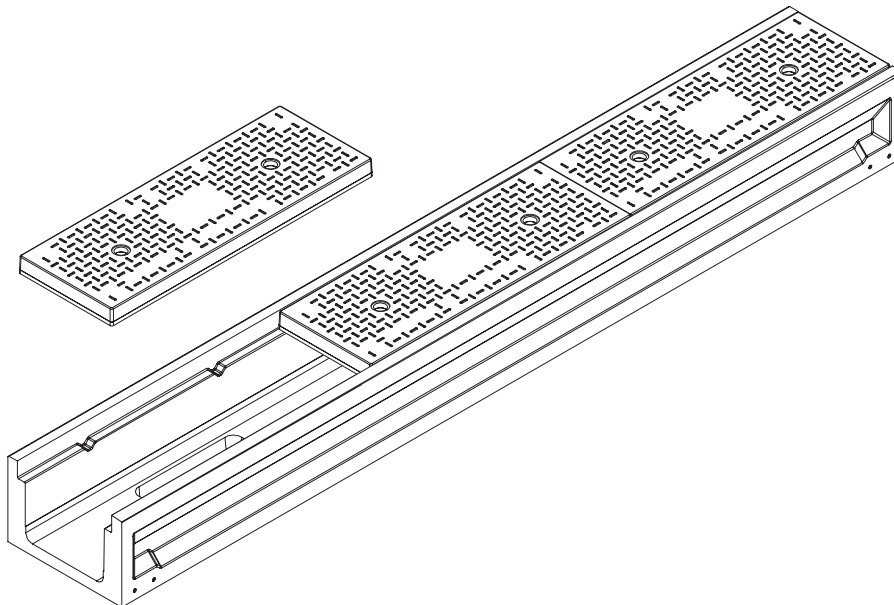
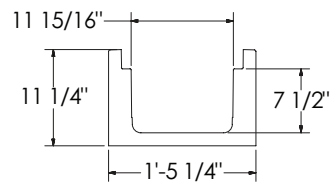


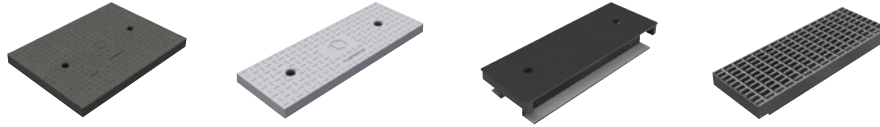
### T128 Trench

High Density Polymer  
Concrete

563 lbs

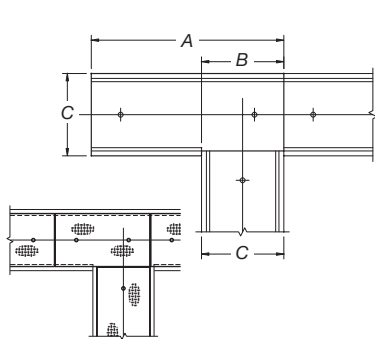
Solid Bottom Available



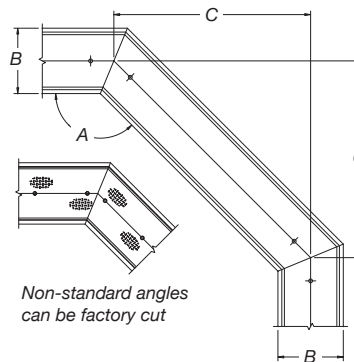


## Options

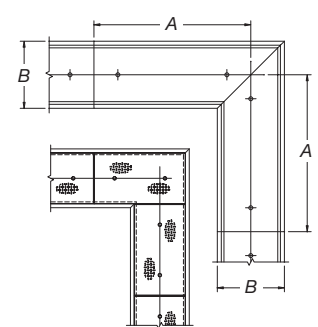
Available Covers: • Plastibeton • Plastibeton HD • Steel • Grated Steel



A	B	C
4'-11 1/16"	1'-5 1/2"	1'-5 1/4"



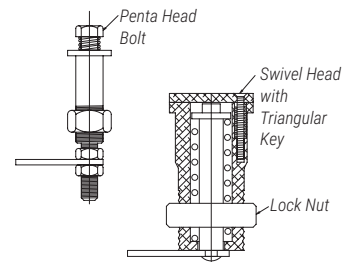
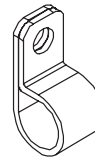
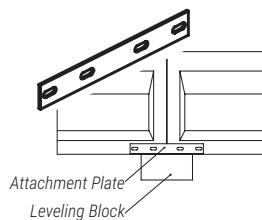
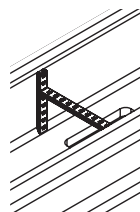
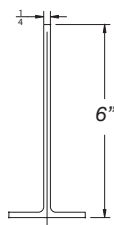
A	B	C
135°	1'-5 1/2"	3'-3 1/4"



A	B
4'-11 1/16"	1'-5 1/4"

Ring and Cover:  
Custom configurations  
are available

• "T" Connection • Horizontal Deviation • Right Angle



Add On Options

• Cable Divider • Unistrut • Attachment Plate • Cable Clips  
- Galvanized  
- Stainless  
- Plastic • Locking  
- Triangular Key  
- Penta Bolt

**WARNING:** Cancer - [www.P65Warnings.ca.gov](http://www.P65Warnings.ca.gov)

All information contained on this sheet is current at the time of publication.  
Oldcastle reserves the right to discontinue or update product information without notice.

Revision 07/13/23

© 2023 Oldcastle Infrastructure, Inc.