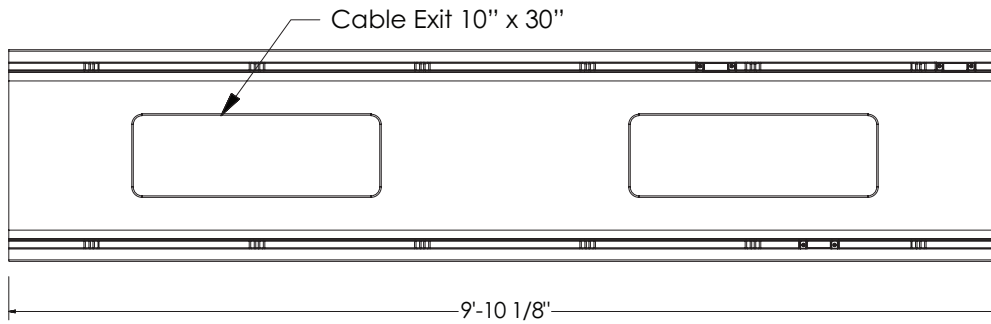


### Plastibeton Cover

128 lbs

32,000 lb Axle Load

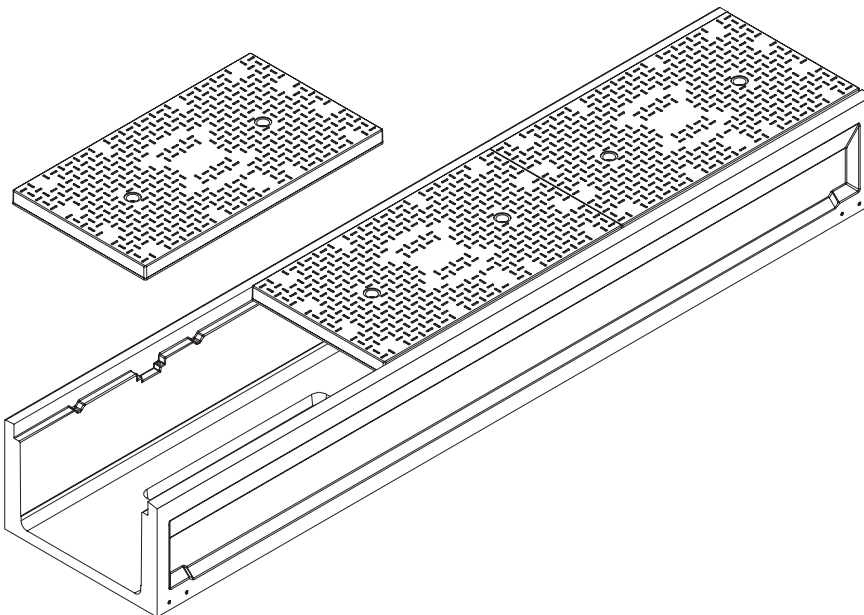
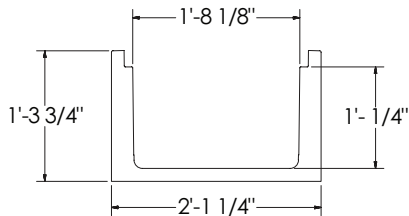


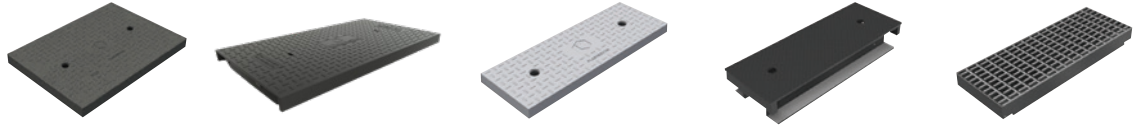
### T2012 Trench

High Density Polymer  
Concrete

816 lbs

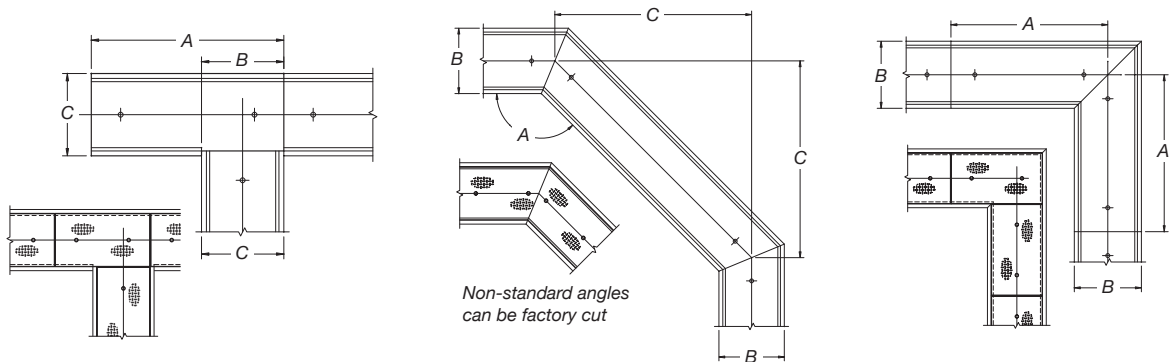
Solid Bottom Available





## Options

Available Covers: • Plastibeton • Plastibeton ULW • Plastibeton HD • Steel • Grated Steel



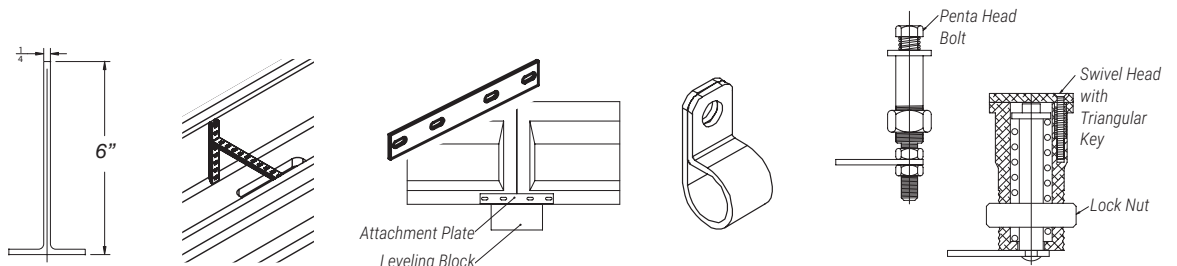
A	B	C
4'-11 1/16"	2'-1 1/2"	2'-1 1/4"

A	B	C
135°	2'-1 1/4"	3'-2"

A	B
4'-11 1/16"	2'-1 1/4"

Ring and Cover:  
Custom configurations  
are available

• "T" Connection • Horizontal Deviation • Right Angle



Add On Options

• Cable Divider • Unistrut • Attachment Plate • Cable Clips  
- Galvanized  
- Stainless  
- Plastic • Locking  
- Triangular Key  
- Penta Bolt

 **WARNING:** Cancer - [www.P65Warnings.ca.gov](http://www.P65Warnings.ca.gov)

All information contained on this sheet is current at the time of publication.  
Oldcastle reserves the right to discontinue or update product information without notice.

Revision 07/13/23

© 2023 Oldcastle Infrastructure, Inc.