

### COVER

Style:	Flush
Material:	High Density Polymer Concrete and Sheet Molding Compound
Model:	C20
Weight:	122 LBS
Surface:	Slip Resistant
Performance:	AASHTO H20

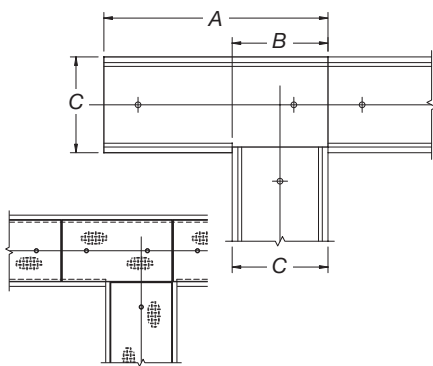
### BODY

Material:	High Density Polymer Concrete
Model:	T2016
Weight:	1074 LBS
Performance:	AASHTO H20

### OPTIONS

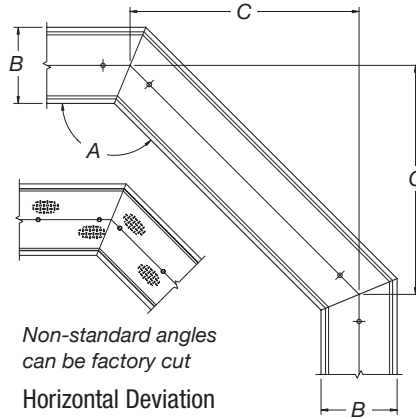
Connections:	Custom layout configurations are available
Locking Options:	Triangular Key Penta Bolt
Add-On Options:	Dividers Unistrut Cable Clips Attachment Plates

## CONFIGURATION



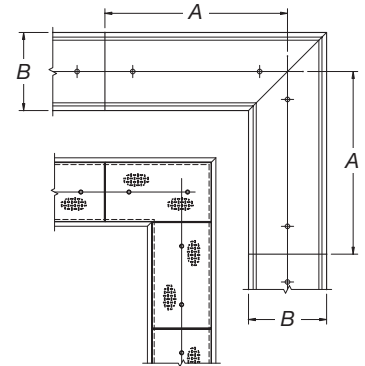
'T' Connection

A	B	C
4'-11 1/16"	2'-1 1/2"	2'-1 1/4"



Non-standard angles  
can be factory cut  
Horizontal Deviation

A	B	C
135°	2'-1 1/4"	3'-2"

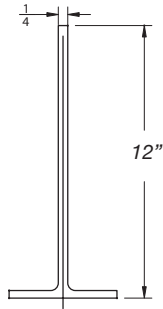


Right Angle

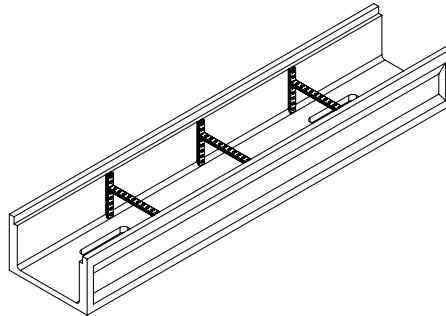
A	B
4'-11 1/16"	2'-1 1/4"

Custom layout configurations are available.

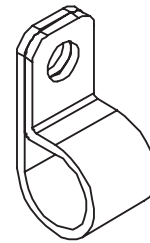
## ACCESSORIES



Cable Divider

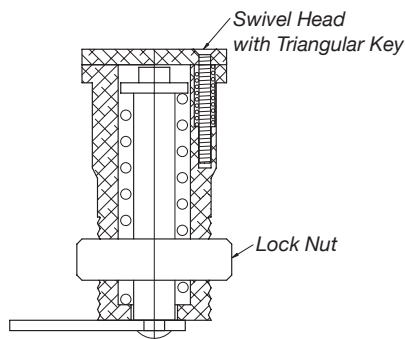


Unistrut

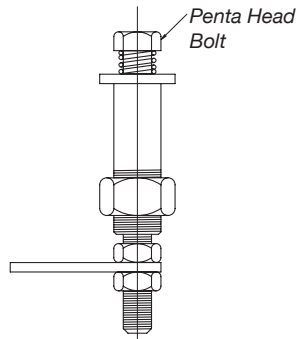


Cable Clips

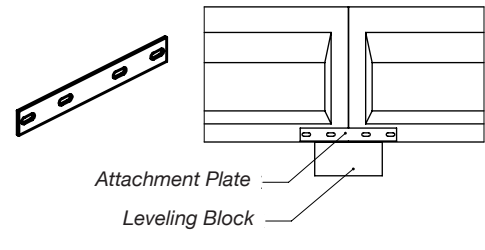
(Galvanized, Stainless Steel, Plastic, or Aluminum)



Triangular Key Lock



Penta Bolt Lock



Attachment Plate