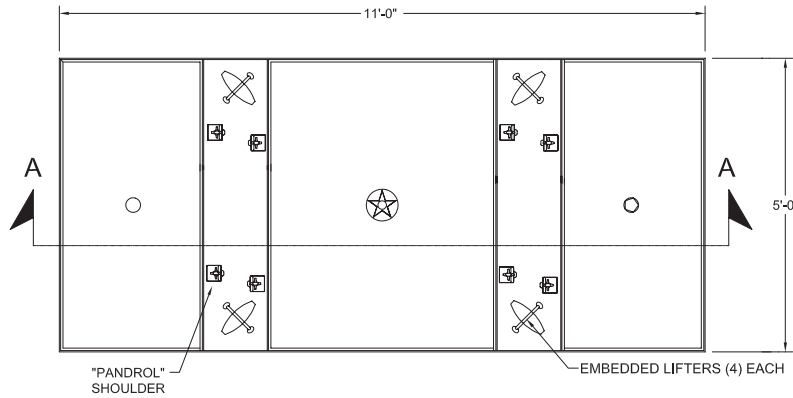




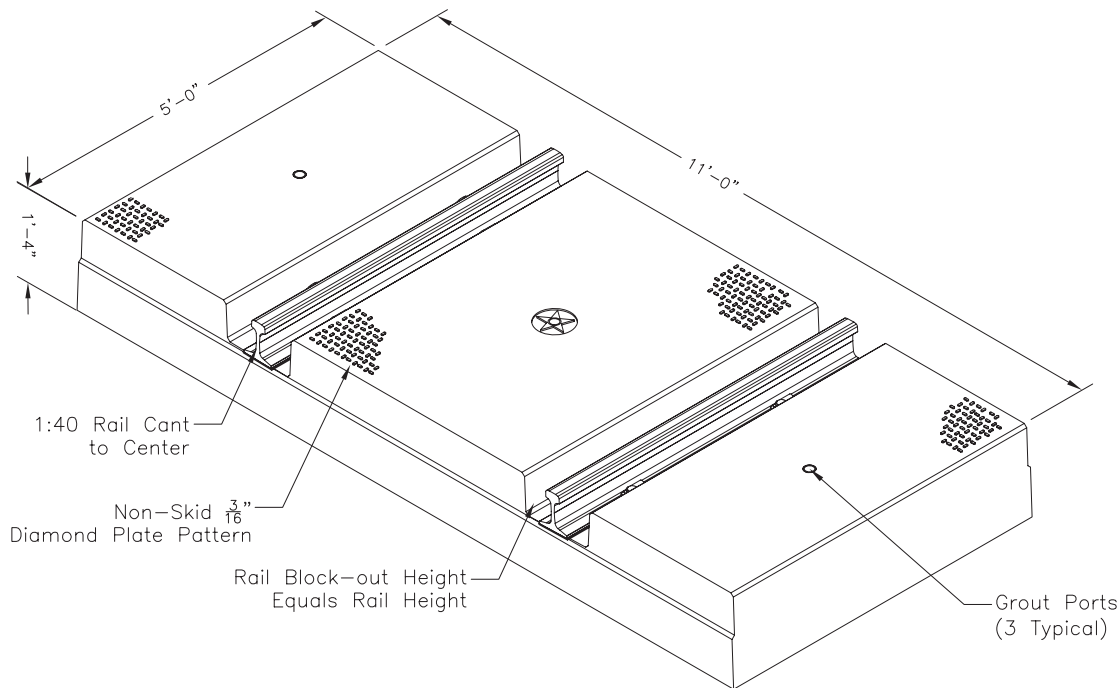
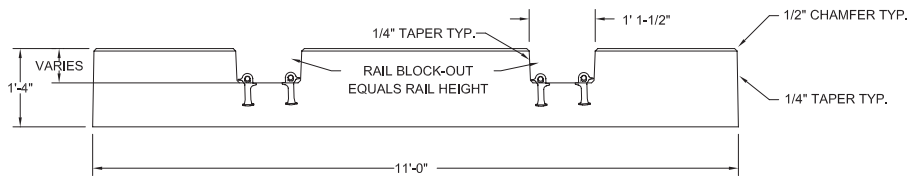
Plan View



**511 HD**

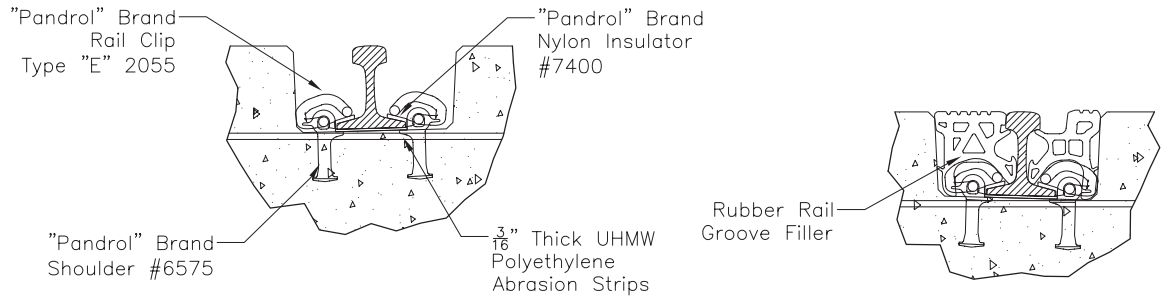
5' x 11'  
10,400 LBS  
Cooper E-80 with 60% Impact  
HS-25

Section A-A



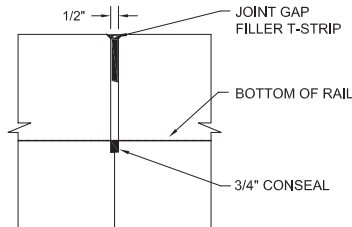


**DETAILS**

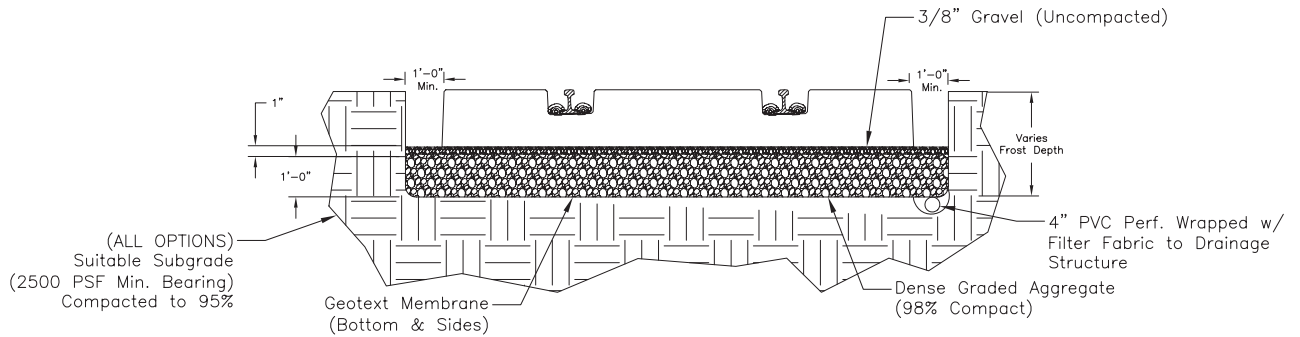


• Rail Detail A

• Rail Detail B



• Connection Detail



• Typical Installation Section

*Specific site conditions may vary. See installation guide.*

**MATERIALS**

Material	Specification	Optional
Concrete	The minimum 28 Day Strength shall be 6000 PSI	Special design mix utilizing Micro-Silica Corrosion inhibitor additive in lieu of epoxy reinforcing Epoxy-coated
Rebar	ASTM A615, Grade 60	
Shoulders	"Pandrol" #6575 Cast	
Shoulders Ductile	Iron Grade #65-45-12	
Abrasion Strips	3/16" Thick UHMW Polyethylene	
Clips	"Pandrol" #E2055 Clips-Spring Steel, Galvanized	
Insulators	"Pandrol" #7400 Thermoplastic/Nylon	
Exposed Surface	Form Cast Concrete, 3/16" Diamond Plate Pattern	Optional: Hydrozo "Enviroseal" Surface Treatment