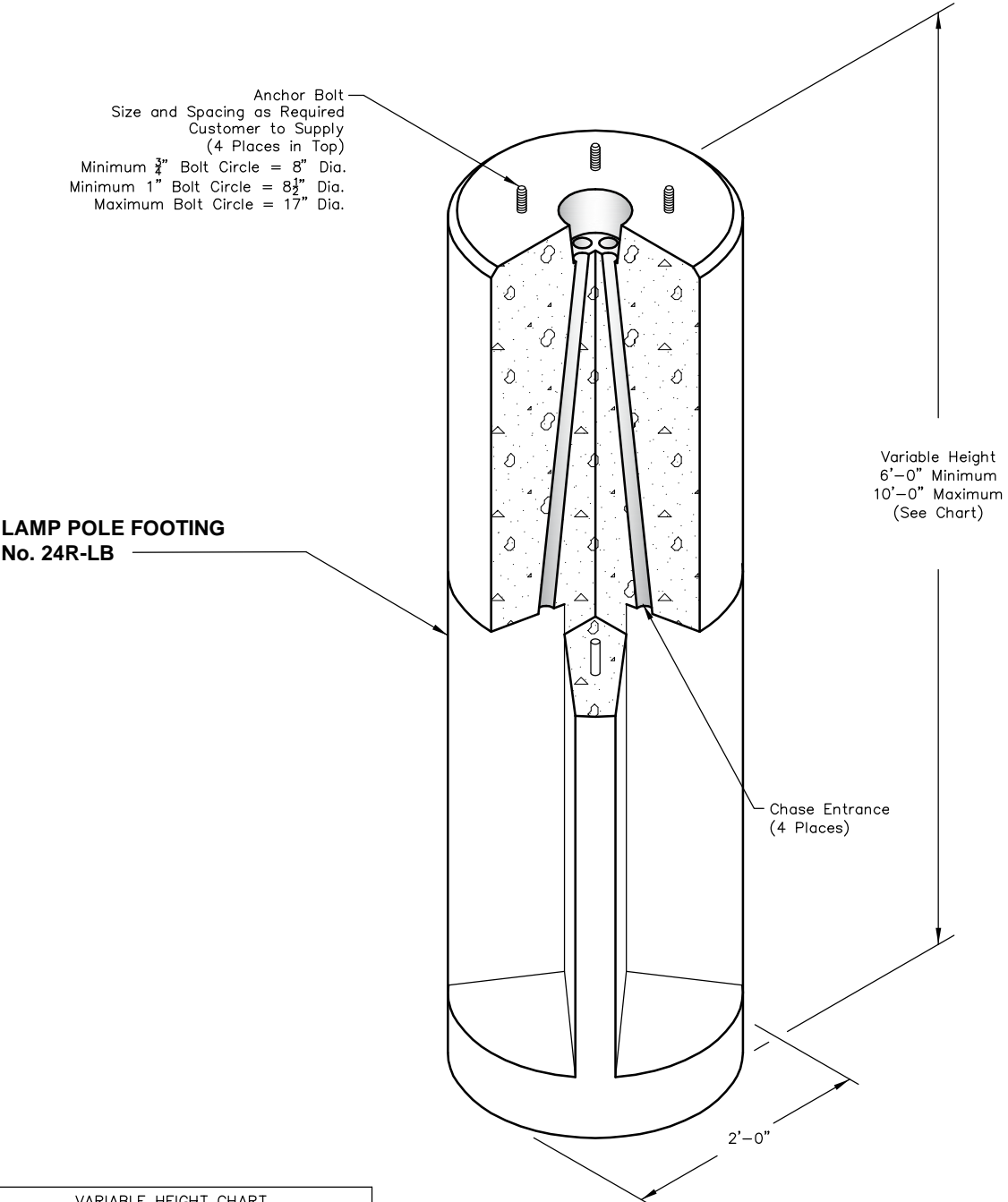



24R-LB

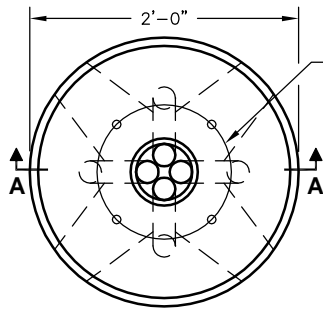


VARIABLE HEIGHT CHART		
Catalog No.	Height	Weight
24R-6-LB	6'-0"	1,930 lbs.
24R-7-LB	7'-0"	2,400 lbs.
24R-8-LB	8'-0"	2,870 lbs.
24R-9-LB	9'-0"	3,340 lbs.
24R-10-LB	10'-0"	3,810 lbs.

Note:
 - Customer is responsible for setting lamp pole footing.
 - Footings should be selected using Structural Code and/or consultation with Professional Engineer.

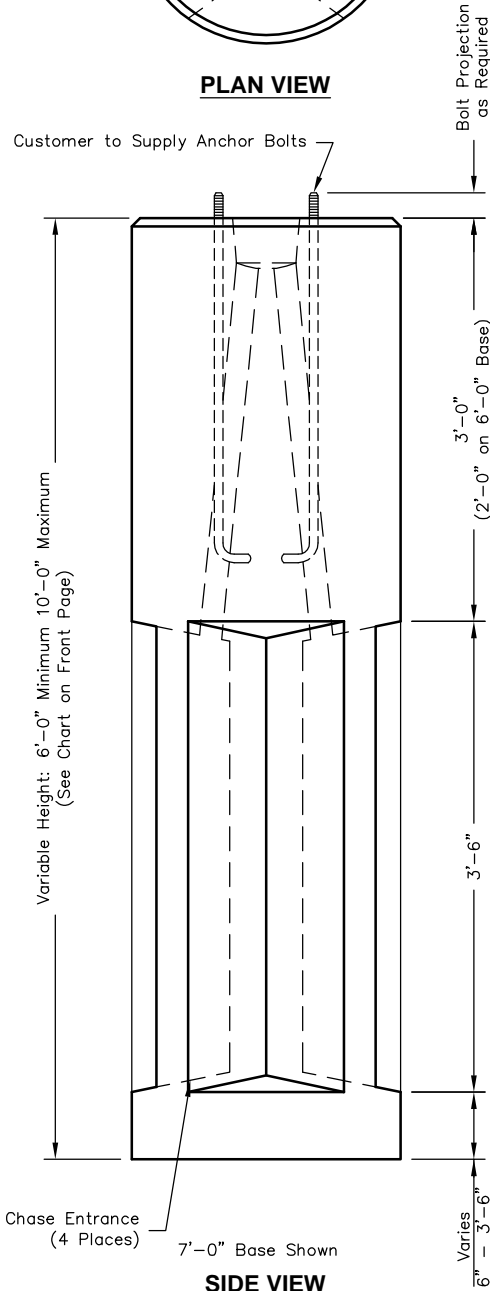
 Oldcastle Precast® PO Box 323, Wilsonville, Oregon 97070-0323 Tel: (503) 682-2844 Fax: (503) 682-2657	24R-LB	24R-LB PRECAST FOOTING FOR LAMP POLE
	File Name: 020-24RLB	
	Issue Date: 2016	
	oldcastleprecast.com/wilsonville	

24R-LB



Minimum $\frac{3}{4}$ " Bolt Circle = 8" Dia.
 Minimum 1" Bolt Circle = 8 $\frac{1}{2}$ " Dia.
 Maximum Bolt Circle = 17" Dia.

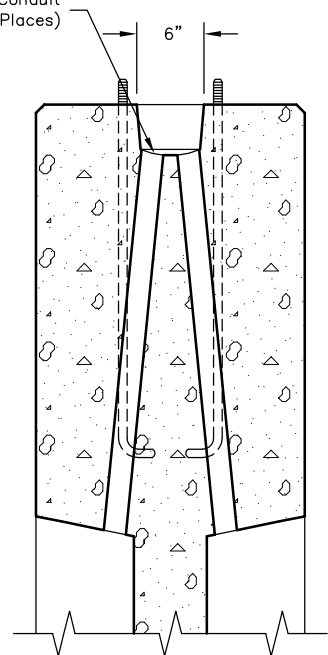
PLAN VIEW



SIDE VIEW

Note:
 - Lamp pole footing is set using lift plate secured to anchor bolt with nut. (2 Places)

2" Dia. PVC Chase for Conduit (4 Places)



SECTION AA



PO Box 323, Wilsonville, Oregon 97070-0323
 Tel: (503) 682-2844 Fax: (503) 682-2657

24R-LB

File Name: 020-24RLB

Issue Date: 2016

oldcastleprecast.com/wilsonville

24R-LB PRECAST FOOTING FOR LAMP POLE