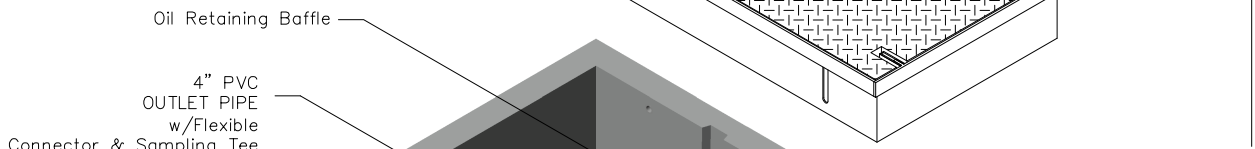


# 253-CPS

## COVER with ADJUSTABLE FRAME No. 25P ASSEMBLY

220 lbs.

Suitable for use in off-street locations  
where not subjected to high density traffic.



## BASE ASSEMBLY No. 253-B-CPS

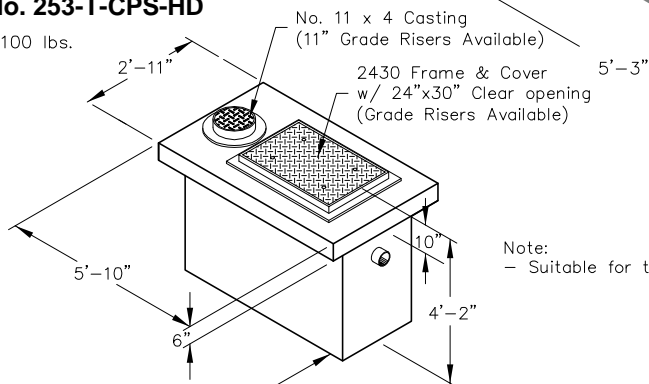
2,195 lbs.

Base	2,000 lbs.
Baffle Wall	95 lbs.
Weir Wall	100 lbs.
Total	2,195 lbs.

$\frac{5}{8}$ "  $\phi$  Lift Insert  
(2 Places Each Side Wall)

## OPTIONAL TOP - HEAVY TRAFFIC No. 253-T-CPS-HD

1,100 lbs.



No.-253-B-CPS  
2,195 lbs.

Note: Designed for 0 to 5'-0" of Cover

Note:  
- Suitable for traffic locations.



PO Box 323, Wilsonville, Oregon 97070-0323  
Tel: (503) 682-2844 Fax: (503) 682-2657

## 253-CPS

File Name: 020-253CPS

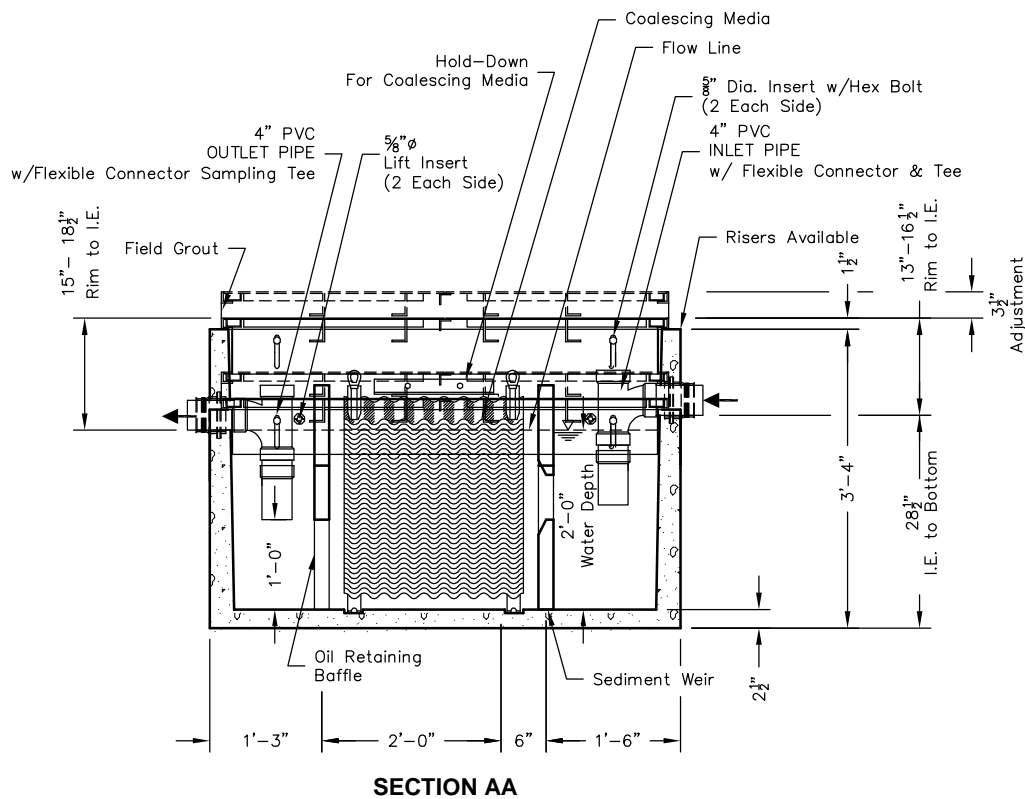
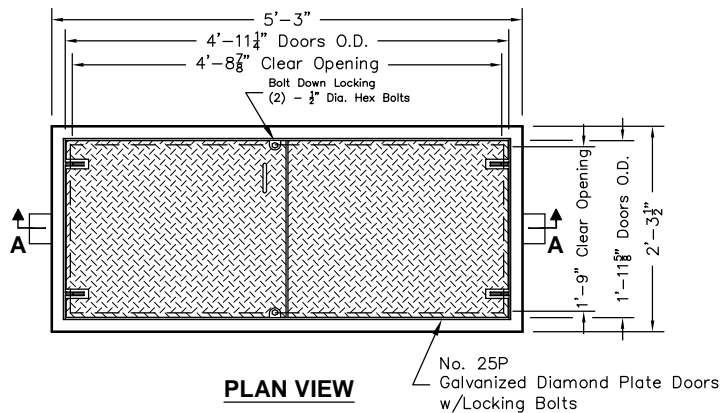
Issue Date: 2018

[oldcastleprecast.com/wilsonville](http://oldcastleprecast.com/wilsonville)

## 253-CPS OIL / WATER SEPARATOR COALESCING - 27 GPM

# 253-CPS

Projected Coalescing Plate Area = 111 Sq.Ft.  
 \*Design Flow Rate = 27 GPM  
 Maximum Process Flow = 144 GPM



**SECTION AA**

*DESIGN FLOW RATE	EFFLUENT QUALITY	100% COLLECTED SIZE
27 GPM	10 ppm	60 Micron

## Basic Design Information: \*

- Influent Characteristics
- Oil Specific Gravity = 0.88
  - Operating Temperature = 50°
  - Influent Oil Concentration = 100 ppm
  - Mean Oil Droplet Size = 130 Microns
  - .033 ft/min. Critical Oil Droplet Predicted Rise Rate

## Notes:

- Static Water Depth = 2'-0"
- Prior to "Startup" of system, fill with clean water to bottom of outlet pipe. For best results, fill to flow line.
- Follow Regular Inspection, Cleaning, & Maintenance Schedule (See Clean Out & Maintenance).

\*Basic Design Information per Washington State Department of Ecology; User to Adjust Estimates for Variations in Real Conditions.



PO Box 323, Wilsonville, Oregon 97070-0323  
 Tel: (503) 682-2844 Fax: (503) 682-2657

## 253-CPS

File Name: 020-253CPS

Issue Date: 2018

[oldcastleprecast.com/wilsonville](http://oldcastleprecast.com/wilsonville)

## 253-CPS OIL / WATER SEPARATOR COALESCING - 27 GPM