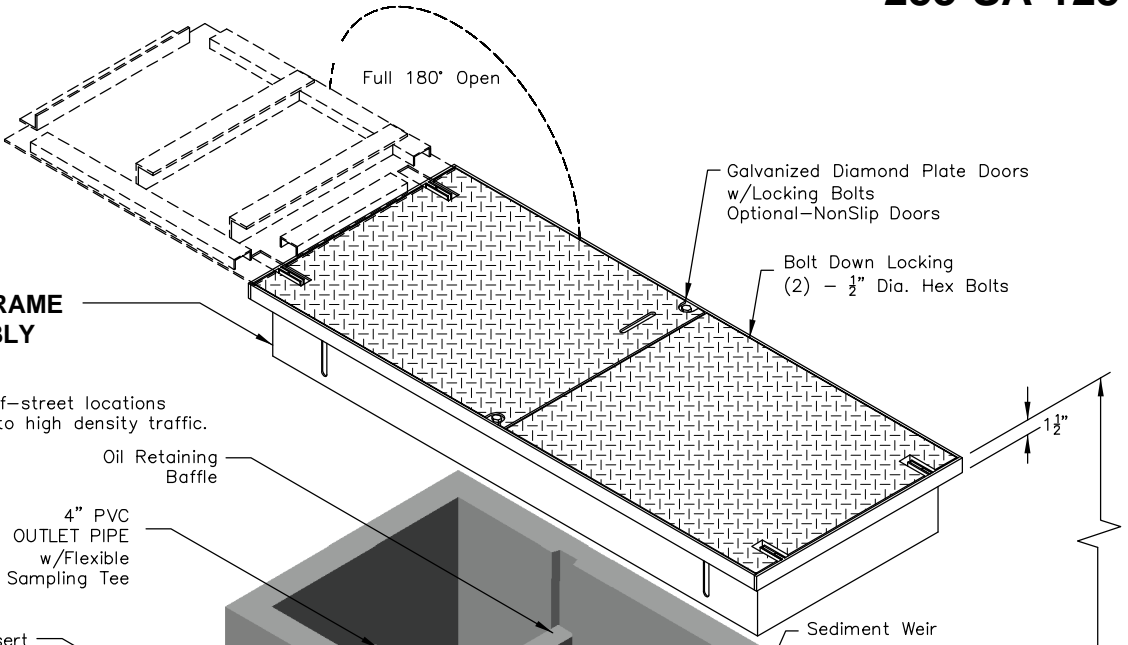


# 253-SA-125

## COVER with ADJUSTABLE FRAME No. 25P ASSEMBLY

220 lbs.

Suitable for use in off-street locations where not subjected to high density traffic.



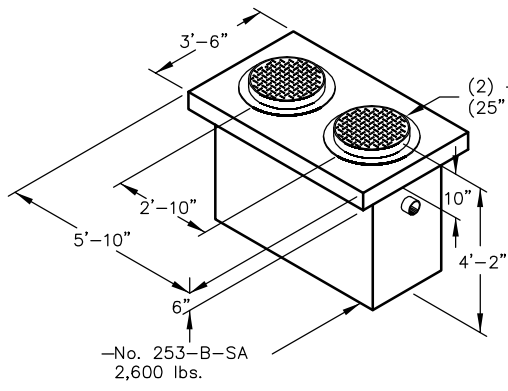
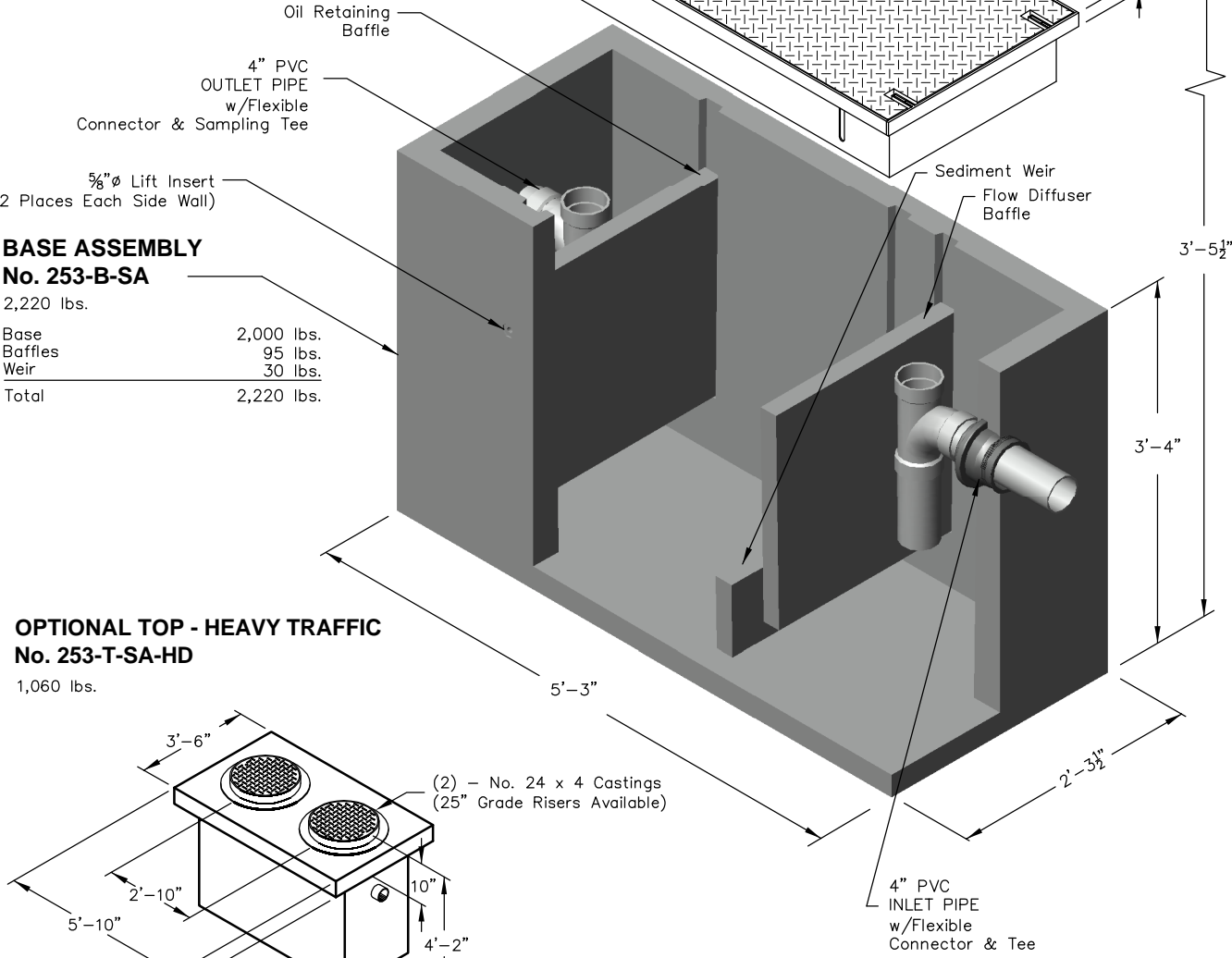
## BASE ASSEMBLY No. 253-B-SA

2,220 lbs.

Base	2,000 lbs.
Baffles	95 lbs.
Weir	30 lbs.
<b>Total</b>	<b>2,220 lbs.</b>

## OPTIONAL TOP - HEAVY TRAFFIC No. 253-T-SA-HD

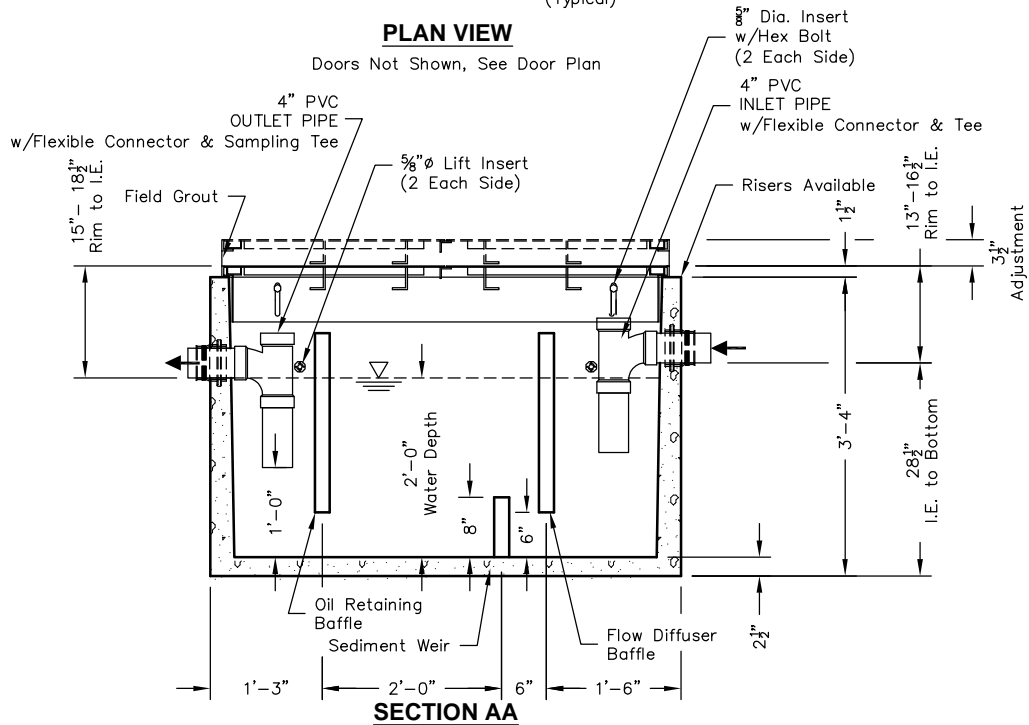
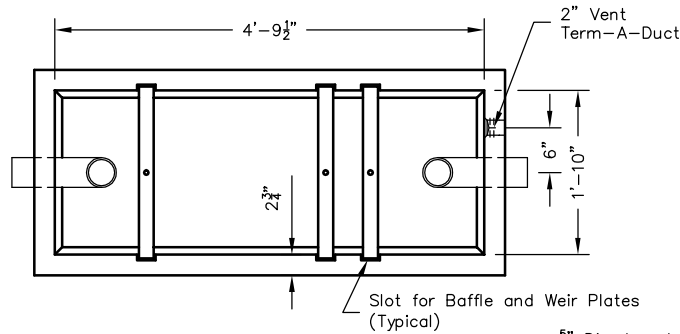
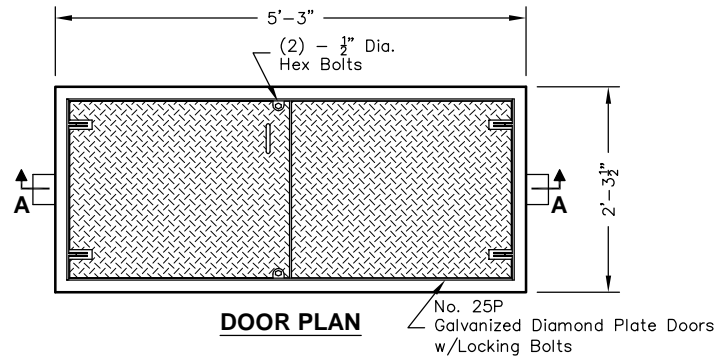
1,060 lbs.



Note: Designed for 0 to 5'-0" of Cover


 PO Box 323, Wilsonville, Oregon 97070-0323 Tel: (503) 682-2844 Fax: (503) 682-2657	<b>253-SA-125</b>	<b>253-SA-125</b> <b>OIL / WATER SEPARATOR</b> <b>125 GALLON - API STYLE</b>
	File Name: 020-253SA-125	
	Issue Date: 2018	
	<a href="http://oldcastleprecast.com/wilsonville">oldcastleprecast.com/wilsonville</a>	

# 253-SA-125



**Notes:**

- Designed in accordance with ASTM C 890 for AASHTO HS20-44 vehicle loading
- Flow Rate 8 GPM based on 15 min. retention time.
- Manufacturer's recommendations:
  - 1.) Ventilate each end to open atmosphere.
  - 2.) Prior to "Start Up" of System, fill with clean water to bottom of outlet pipe (approx. one foot deep). For best results, fill to flow line.
  - 3.) Follow Regular Inspection, Cleaning, & Maintenance Schedule (See Clean Out & Maintenance).

 <p>PO Box 323, Wilsonville, Oregon 97070-0323 Tel: (503) 682-2844 Fax: (503) 682-2657</p>	<p><b>253-SA-125</b></p>	<p><b>253-SA-125</b> <b>OIL / WATER SEPARATOR</b> <b>125 GALLON - API STYLE</b></p>
	File Name: 020-253SA-125	
	Issue Date: 2018	
	<p><b>oldcastleprecast.com/wilsonville</b></p>	