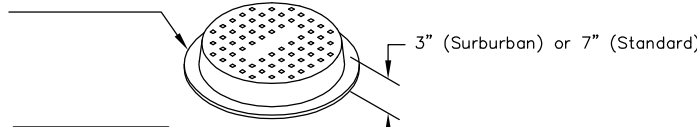


48" MANHOLE

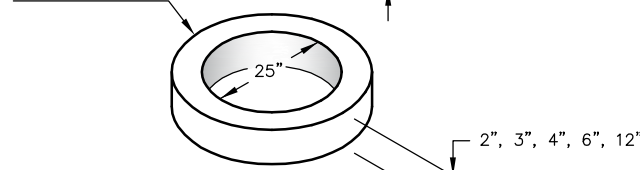
FRAME AND COVER

3" = 275 lbs.
7" = 350 lbs.



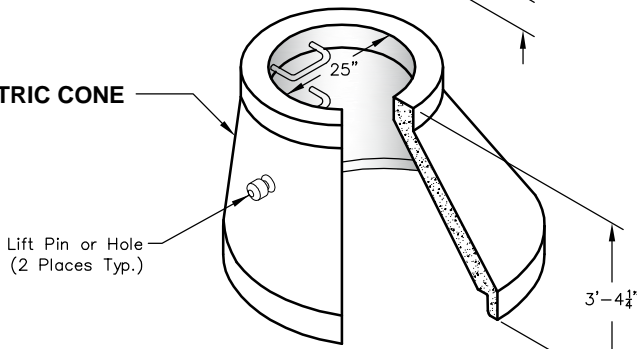
GRADE RING

2" = 80 lbs.
3" = 125 lbs.
4" = 165 lbs.
6" = 245 lbs.
12" = 490 lbs.



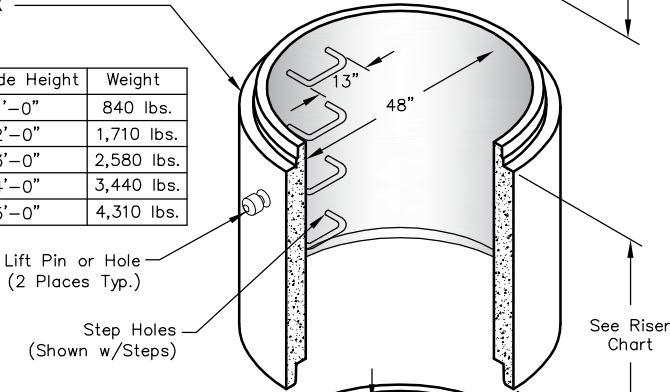
ECCENTRIC CONE

2,480 lbs.



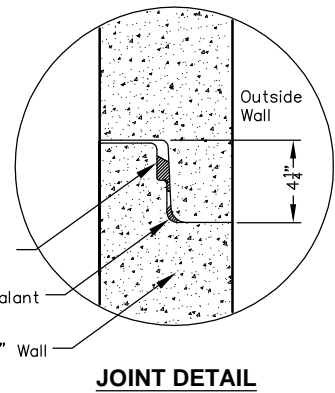
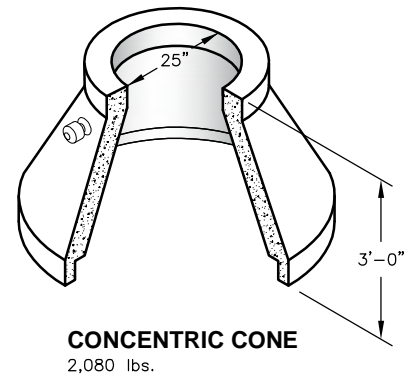
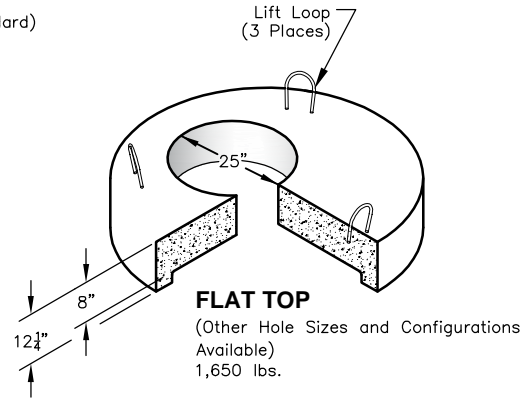
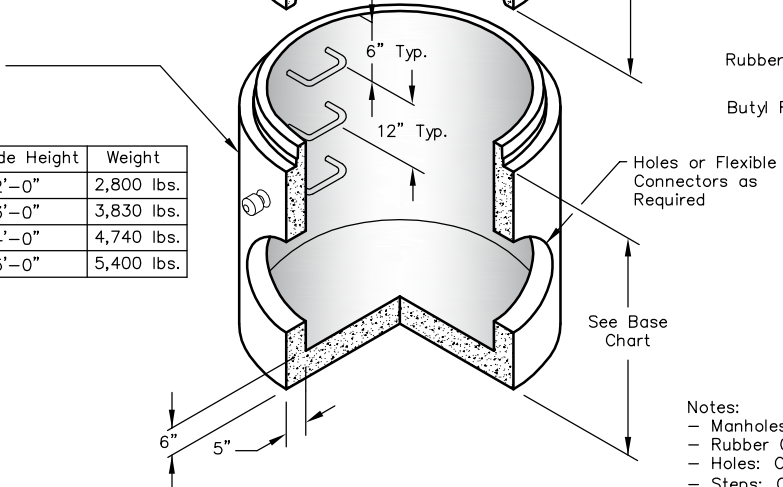
RISER

Outside Height	Weight
1'-0"	840 lbs.
2'-0"	1,710 lbs.
3'-0"	2,580 lbs.
4'-0"	3,440 lbs.
5'-0"	4,310 lbs.




BASE

Outside Height	Weight
2'-0"	2,800 lbs.
3'-0"	3,830 lbs.
4'-0"	4,740 lbs.
5'-0"	5,400 lbs.



- Notes:
- Manholes per Specification: ASTM C478
 - Rubber Gasket: ASTM C443
 - Holes: Cored or Cast as Required.
 - Steps: Copolymer Polypropylene Plastic w/#4 Bar in Center.
 - Frame & Cover: Gray Cast Iron ASTM A48 Class 30, Watertight/Tamperproof Cover Available.
 - Optional Extended Base Available.

 <p>PO Box 323, Wilsonville, Oregon 97070-0323 Tel: (503) 682-2844 Fax: (503) 682-2657</p>	48" MANHOLE	48" MANHOLE
	File Name: 020-48MH	
	Issue Date: 2016	
	oldcastleprecast.com/wilsonville	