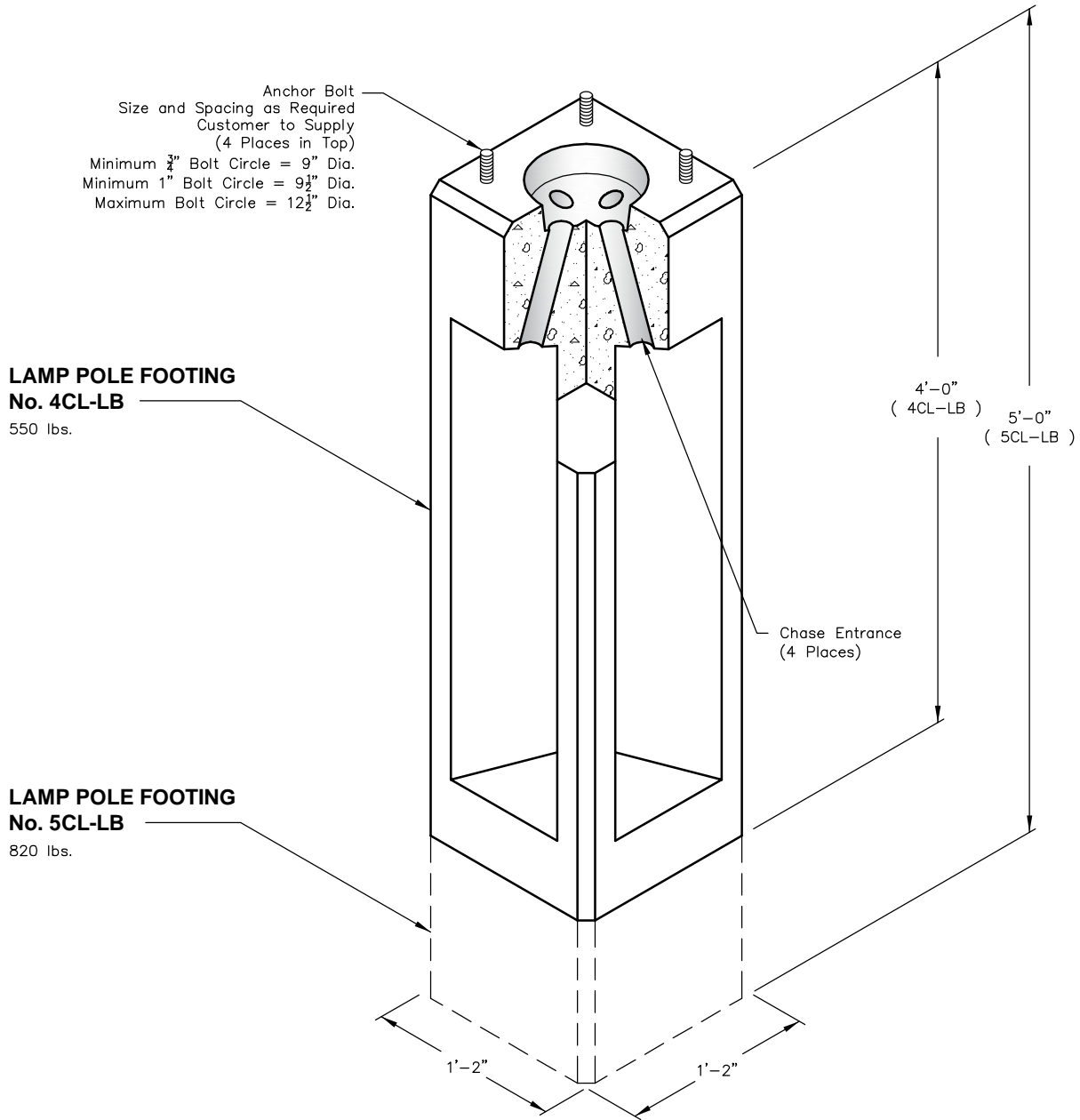



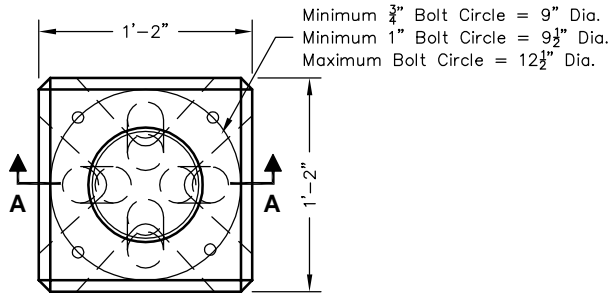
# 4CL-LB / 5CL-LB



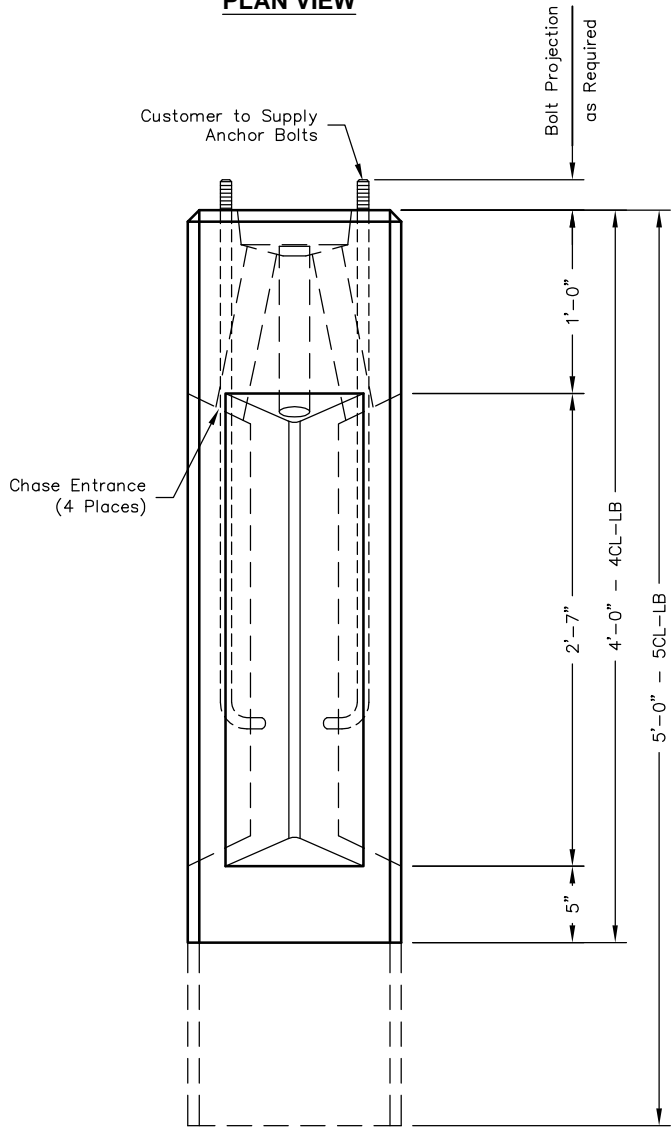
- Notes:
- Customer is responsible for setting lamp pole footing.
  - Footings should be selected using Structural Code and/or consultation with Professional Engineer.

 <b>Oldcastle Precast®</b> PO Box 323, Wilsonville, Oregon 97070-0323 Tel: (503) 682-2844 Fax: (503) 682-2657	<b>4CL-LB / 5CL-LB</b>	<b>4CL-LB / 5CL-LB PRECAST FOOTING FOR LAMP POLE</b>
	File Name: 020-4CL5CL	
	Issue Date: 2018	
	<a href="http://oldcastleprecast.com/wilsonville">oldcastleprecast.com/wilsonville</a>	

# 4CL-LB / 5CL-LB

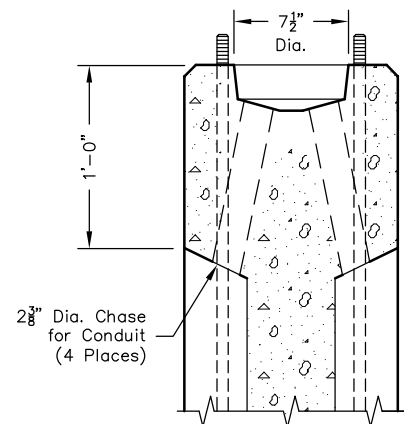


**PLAN VIEW**




**SIDE VIEW**

Note:  
 - Lamp pole footing is set using lift plate secured to anchor bolt with nut. (2 Places)



**SECTION AA**

 <p>PO Box 323, Wilsonville, Oregon 97070-0323          Tel: (503) 682-2844 Fax: (503) 682-2657</p>	<h2>4CL-LB / 5CL-LB</h2>	<h2>4CL-LB / 5CL-LB                  PRECAST FOOTING                  FOR LAMP POLE</h2>
	File Name: 020-4CL5CL	
	Issue Date: 2018	
	<a href="http://oldcastleprecast.com/wilsonville">oldcastleprecast.com/wilsonville</a>	