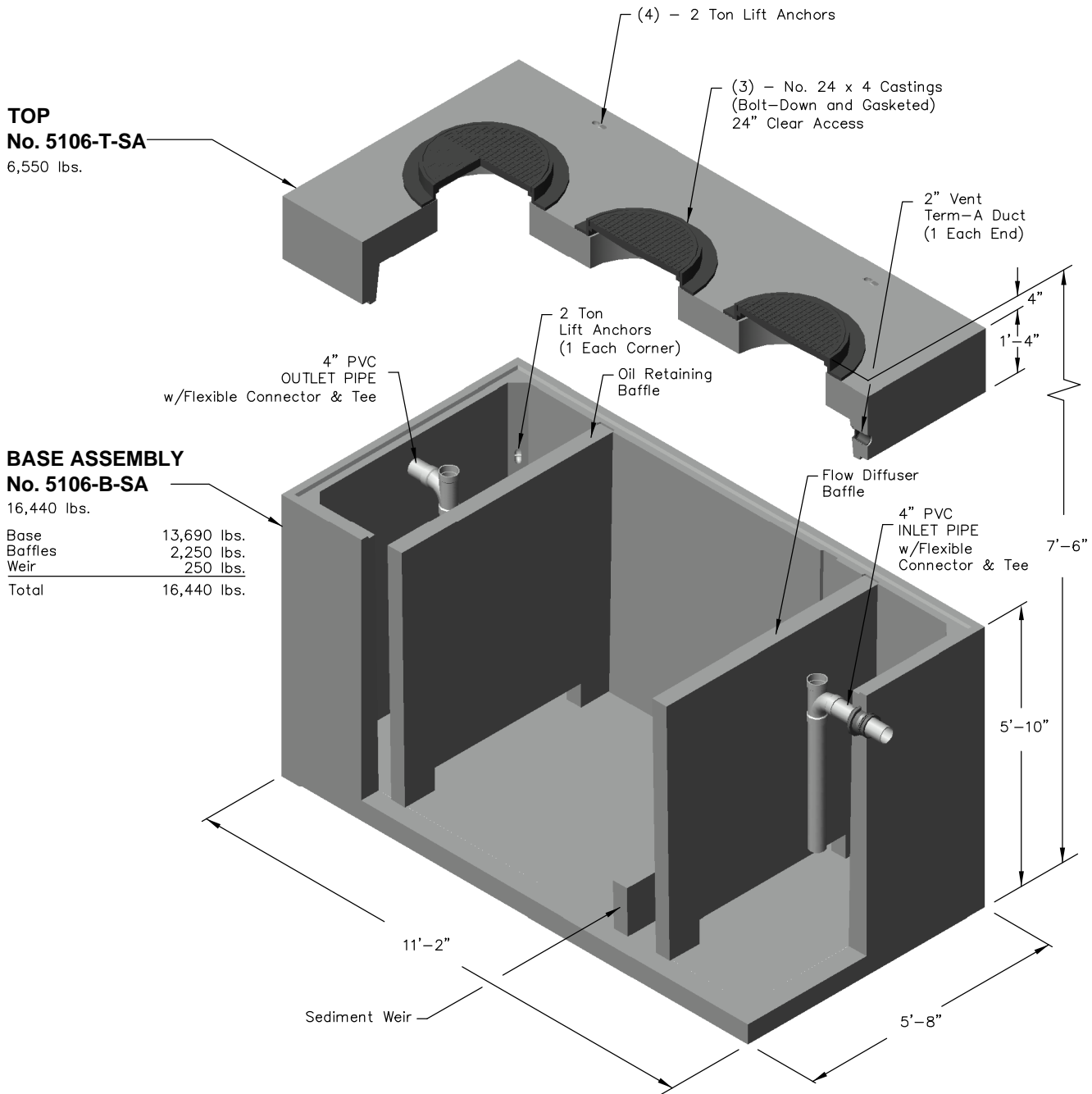


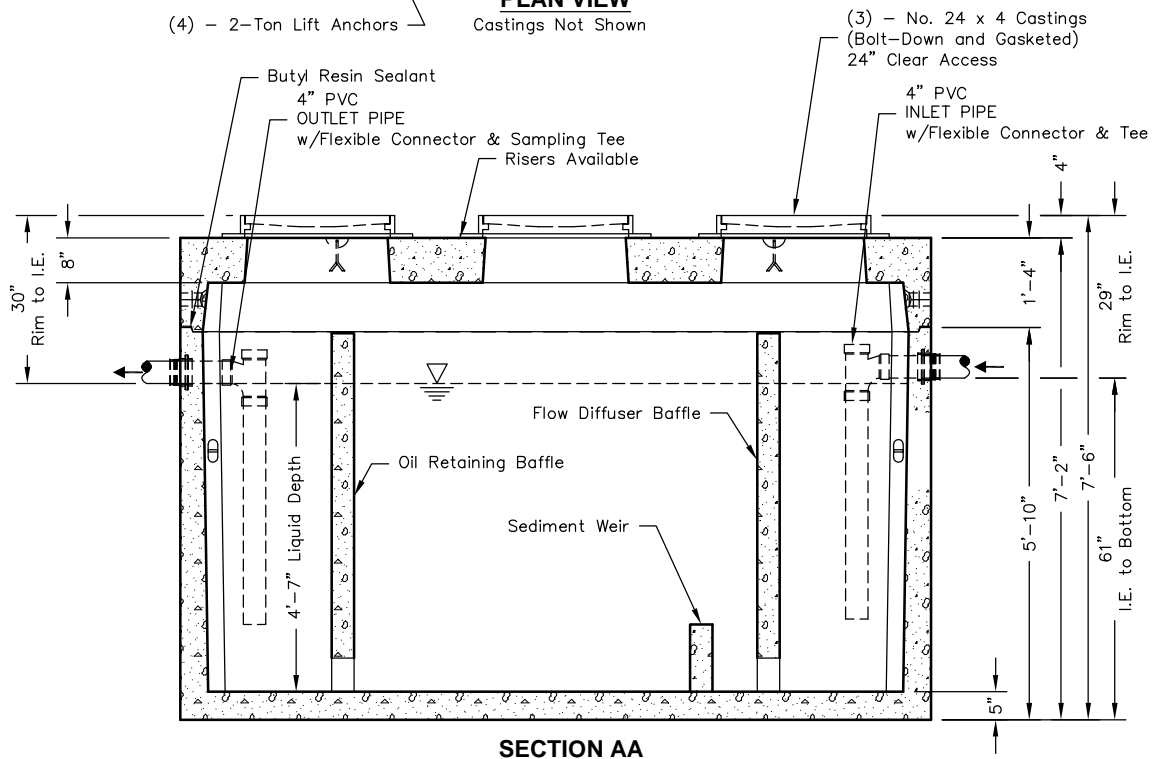
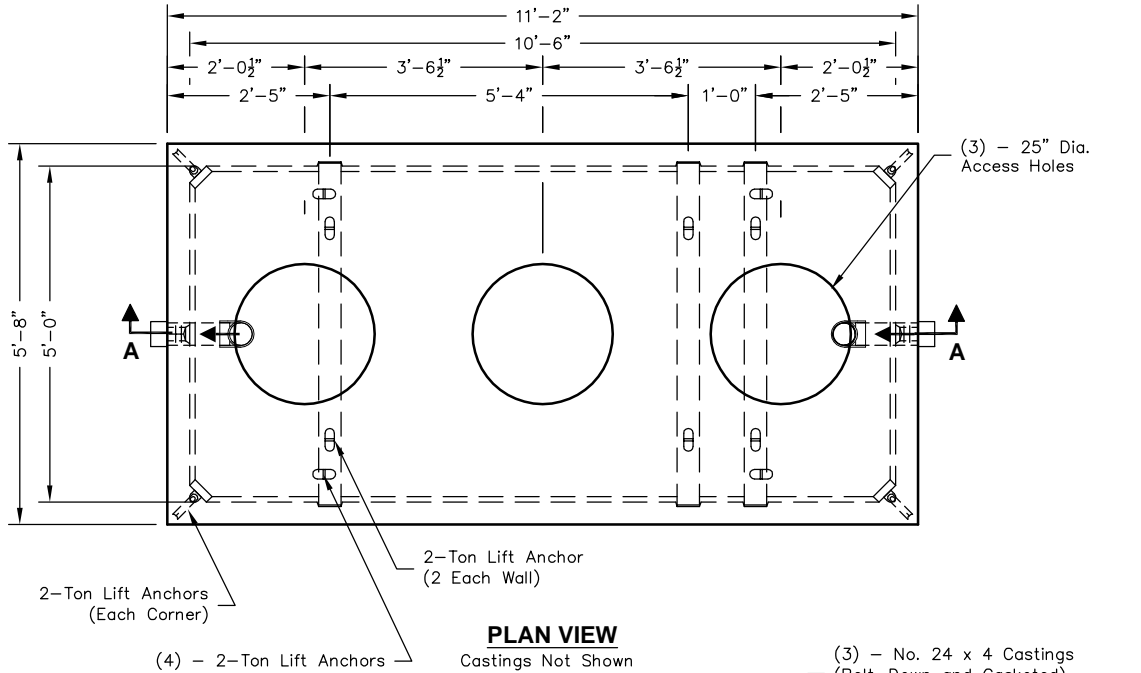
# 5106-SA-1750



Note: Designed for 0 to 5'-0" of Cover

 PO Box 323, Wilsonville, Oregon 97070-0323 Tel: (503) 682-2844 Fax: (503) 682-2657	<b>5106-SA-1750</b>	<b>5106-SA-1750</b> <b>OIL / WATER SEPARATOR</b> <b>1750 GALLON - API STYLE</b>
	File Name: 020-5106-SA-1750	
	Issue Date: 2016	
	<a href="http://oldcastleprecast.com/wilsonville">oldcastleprecast.com/wilsonville</a>	

# 5106-SA-1750



**Notes:**

- Designed in accordance with ASTM C 890 for AASHTO HS20-44 vehicle loading
- Flow Rate 117 GPM based on 15 min. retention time.
- Manufacturer's recommendations:
  - 1.) Ventilate each end to open atmosphere.
  - 2.) Prior to "Start Up" of System, fill with clean water to bottom of outlet pipe (approx. one foot deep). For best results, fill to flow line.
  - 3.) Follow Regular Inspection, Cleaning, & Maintenance Schedule (See Clean Out & Maintenance).

 <p>PO Box 323, Wilsonville, Oregon 97070-0323 Tel: (503) 682-2844 Fax: (503) 682-2657</p>	<b>5106-SA-1750</b>	<b>5106-SA-1750</b> <b>OIL / WATER SEPARATOR</b> <b>1750 GALLON - API STYLE</b>
	File Name: 020-5106-SA-1750	
	Issue Date: 2016	
	<a href="http://oldcastleprecast.com/wilsonville">oldcastleprecast.com/wilsonville</a>	