

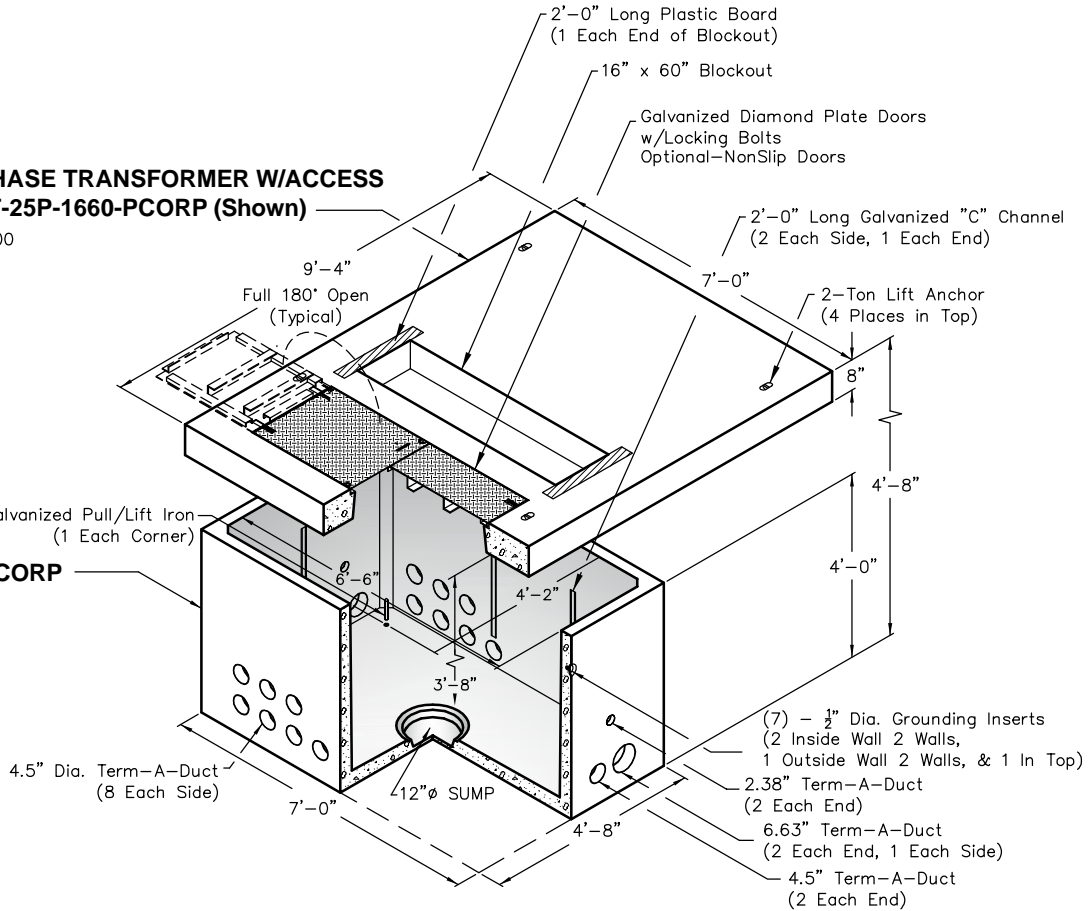
# 575-TRANS-PCORP

5 x 7, 4-25 kV, 3-Phase 75-750 kVA Transformer Padvault With Access, Stock Item 7992600  
 5 x 7, 35 kV, 3-Phase 75-750 kVA Transformer Padvault With Access, Stock Item 7992602

**TOP**  
**4-25kV, 3-PHASE TRANSFORMER W/ACCESS**  
**No. 84/112-T-25P-1660-PCORP (Shown)**

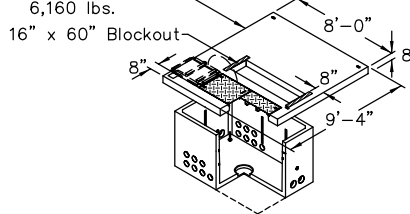
PCORP #7992600  
 5,225 lbs.

**BASE**  
**No. 575-B-PCORP**  
 4,800 lbs.



**OPTIONAL TOP**

35 KV, 3-PHASE TRANSFORMER W/ACCESS  
 PCORP #7992602  
 No. 96/112-T-25P-1660-PCORP




CABINET  
 HOLD-DOWN CLEAT

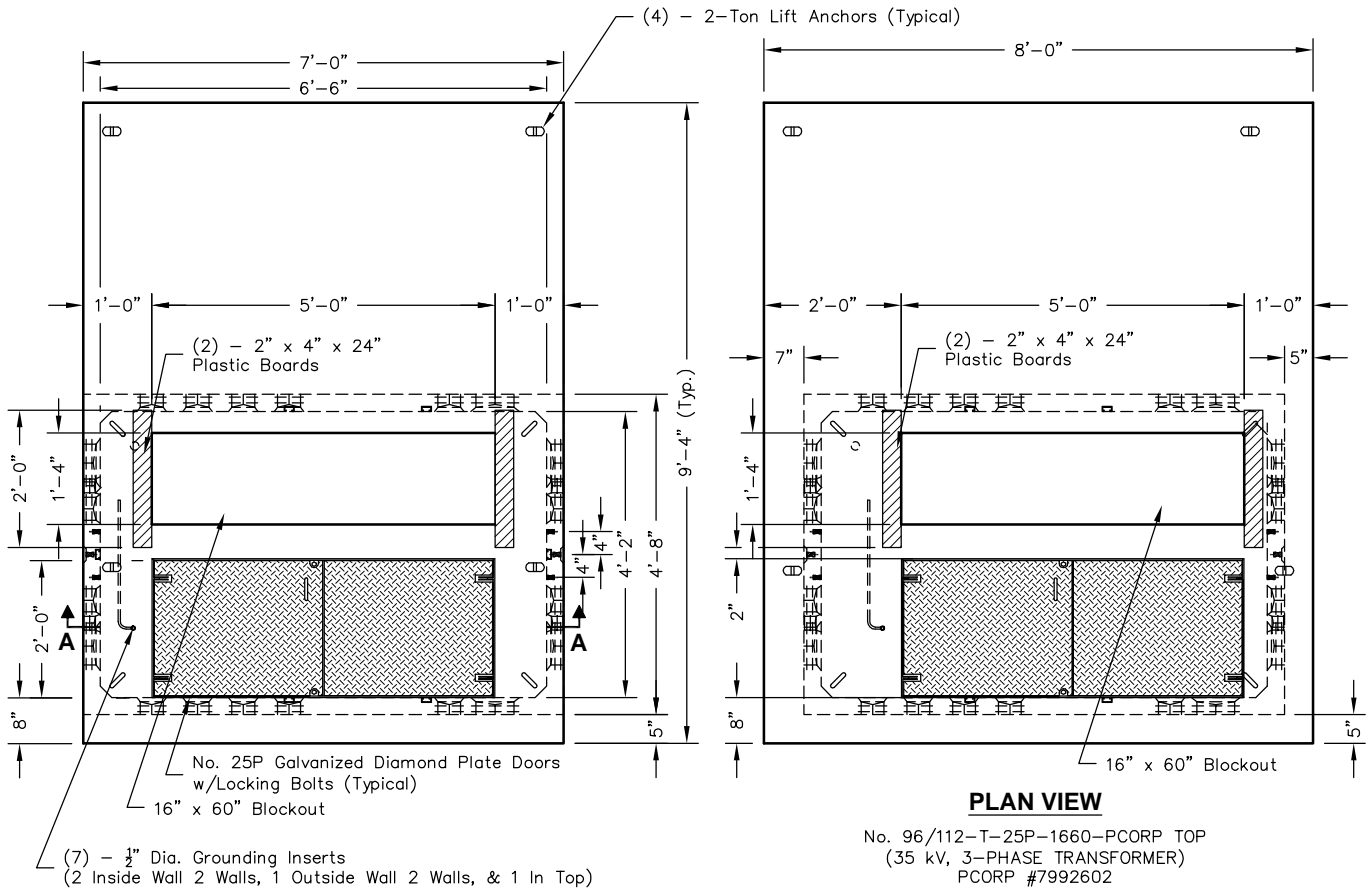
- (2) - Required
- 1 1/4\" x 2 1/2\" Stainless Steel Hold-Down Cleat
- 1/2\" x 2\" Galvanized Lag Screw
- 2\" Stainless Steel Bellville Washer

PCORP ZG621 6-13-13
PCORP ZG521 6-13-13

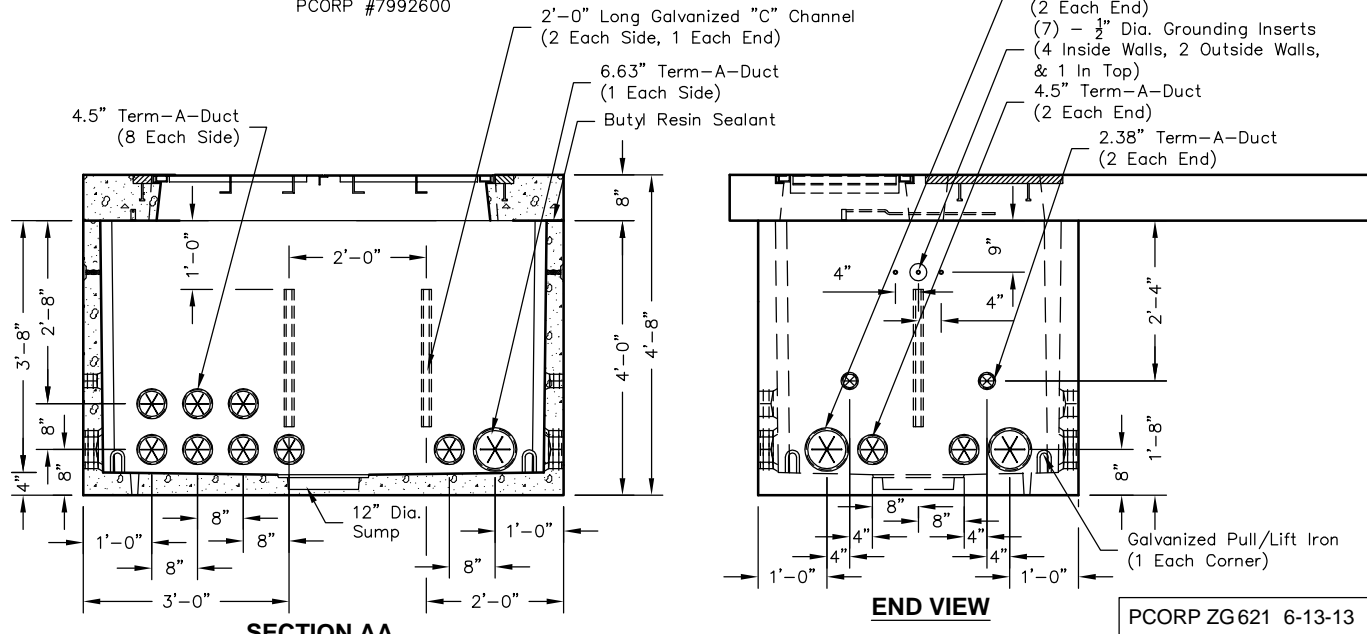
Note: Designed for 0 to 5'-0\" of Cover

 <p>PO Box 323, Wilsonville, Oregon 97070-0323                  Tel: (503) 682-2844 Fax: (503) 682-2657</p>	<p><b>575-TRANS-PCORP</b></p>	<p><b>575-TRANS-PCORP</b>  <b>5 x 7</b>  <b>PACIFICORP</b></p>
	File Name: 020-575TRANS	
	Issue Date: 2018	
	<p><a href="http://oldcastleprecast.com/wilsonville">oldcastleprecast.com/wilsonville</a></p>	


# 575-TRANS-PCORP



No. 84/112-T-25P-1660-PCORP  
(4-25 kV, 3-PHASE TRANSFORMER TOP)  
PCORP #7992600



PCORP ZG621 6-13-13  
PCORP ZG521 6-13-13

 <p>PO Box 323, Wilsonville, Oregon 97070-0323 Tel: (503) 682-2844 Fax: (503) 682-2657</p>	<p><b>575-TRANS-PCORP</b></p>	<p><b>575-TRANS-PCORP</b> <b>5 x 7</b> <b>PACIFICORP</b></p>
	<p>File Name: 020-575TRANS</p>	
	<p>Issue Date: 2018</p>	
	<p><a href="http://oldcastleprecast.com/wilsonville">oldcastleprecast.com/wilsonville</a></p>	