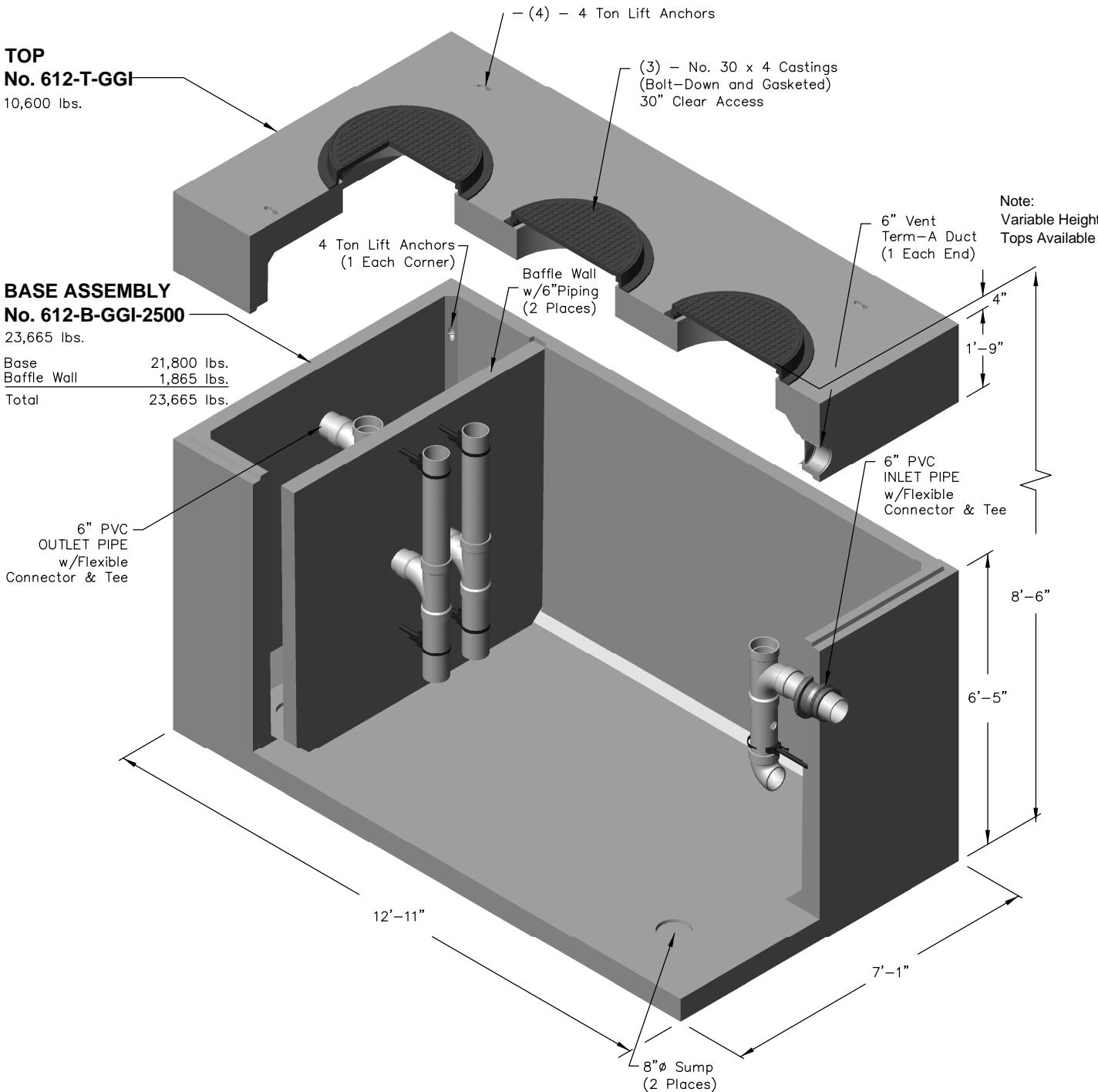


612-GGI-2500 6" PIPING




Note:
- Contractor is responsible for supplying crane to set vault.

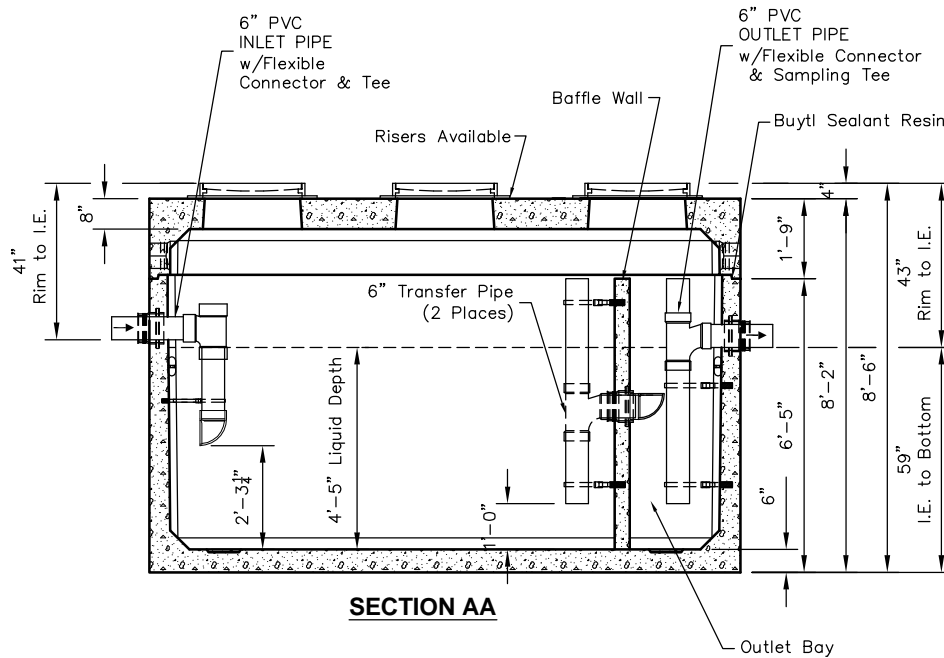
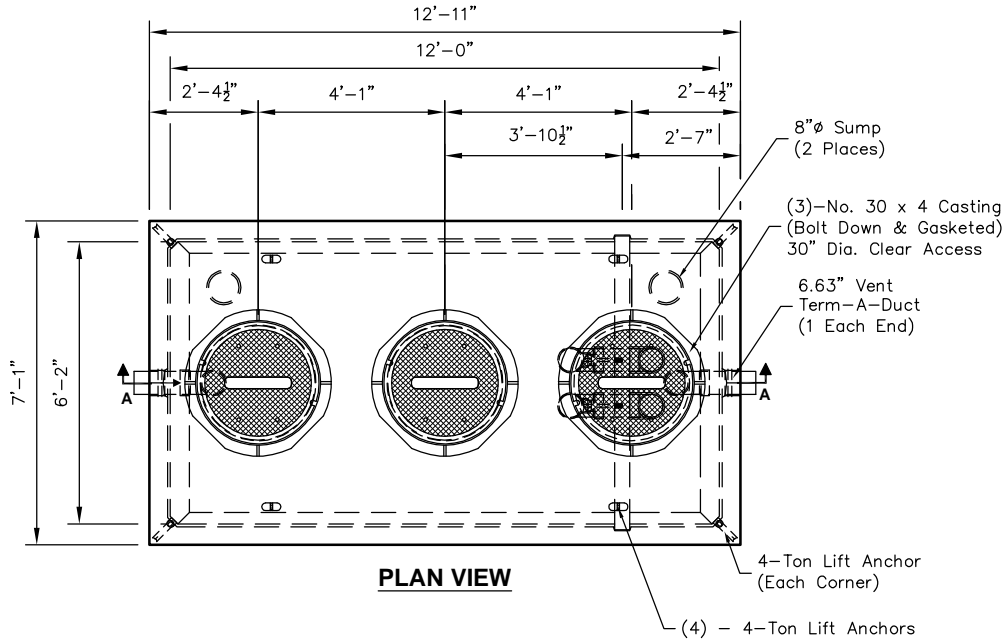
Note: Designed for 0 to 5'-0" of Cover



"IAPMO Listed"

 PO Box 323, Wilsonville, Oregon 97070-0323 Tel: (503) 682-2844 Fax: (503) 682-2657	612-GGI-2500		612-GGI-2500 GRAVITY GREASE INTERCEPTOR 2500 GALLON
	File Name: 020-612GGI-2500		
	Issue Date: 2018		
	oldcastleprecast.com/wilsonville		

612-GGI-2500 6" PIPING



Gravity Grease Interceptor:

- Designed in accordance with IAPMO/ANSI Z1001, Manufactured per ASTM C1613
- Loading per ASTM C890 for AASHTO HS20-44 vehicle loading and maximum soil cover of 5'-0"
- Maximum allowable DFUs (Drainage Fixture Units) = 307 (equivalent to 2,500 gallon size)
- Corrosion resistant plastic liner available to extend the life of the tank.

Manufacturer's recommendations:

- Fill lift anchor pockets with grout.
- Ventilate each end to open atmosphere.
- Prior to "Start Up" of System, fill with clean water through inlet bay to bottom of transfer pipe (approx. one foot deep).
- Follow Regular Inspection, Cleaning, & Maintenance Schedule (See Clean Out & Maintenance Instructions).



PO Box 323, Wilsonville, Oregon 97070-0323
Tel: (503) 682-2844 Fax: (503) 682-2657

612-GGI-2500

File Name: 020-612GGI-2500

Issue Date: 2018

oldcastleprecast.com/wilsonville

612-GGI-2500 GRAVITY GREASE INTERCEPTOR 2500 GALLON