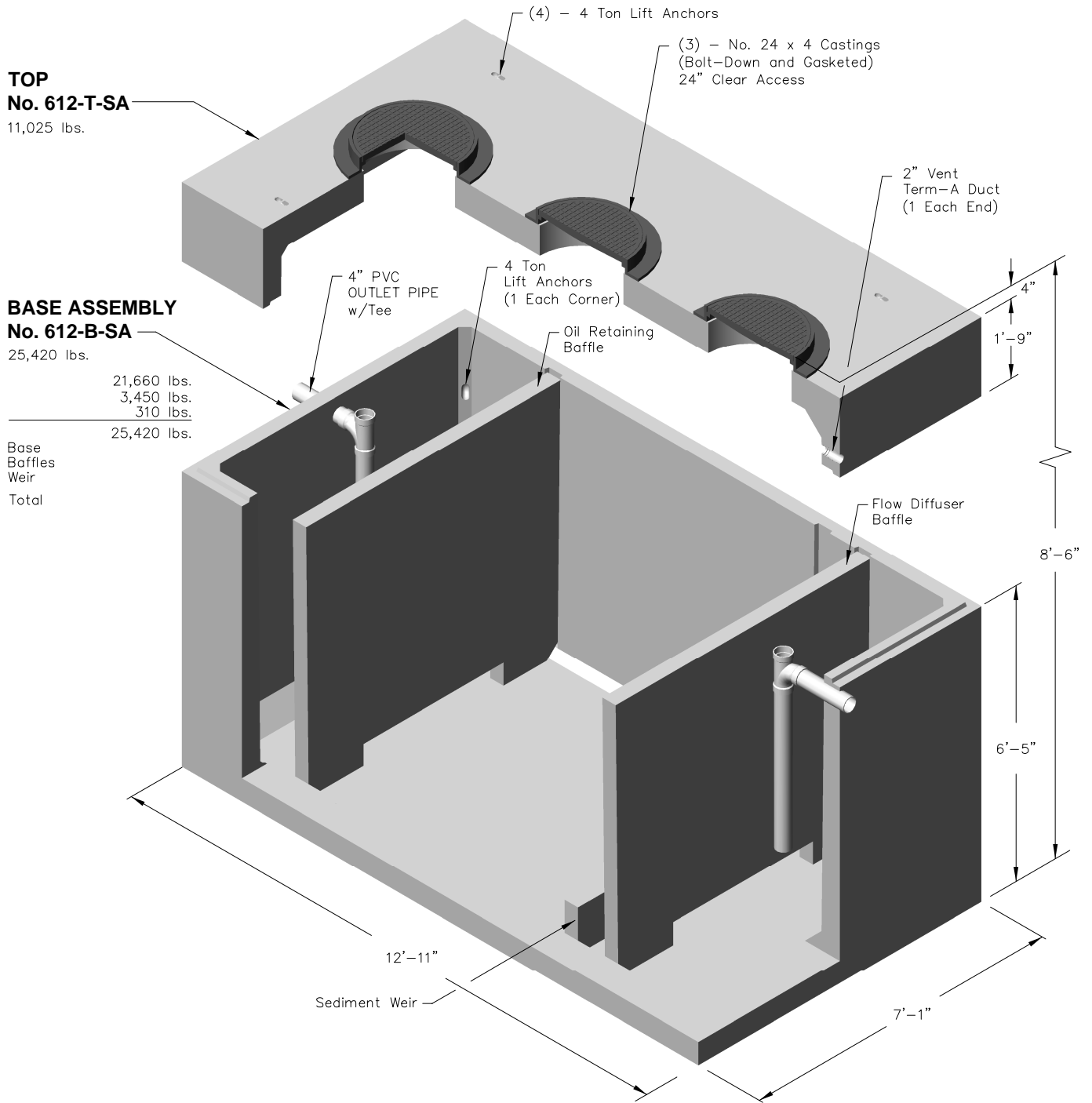


612-SA-3000



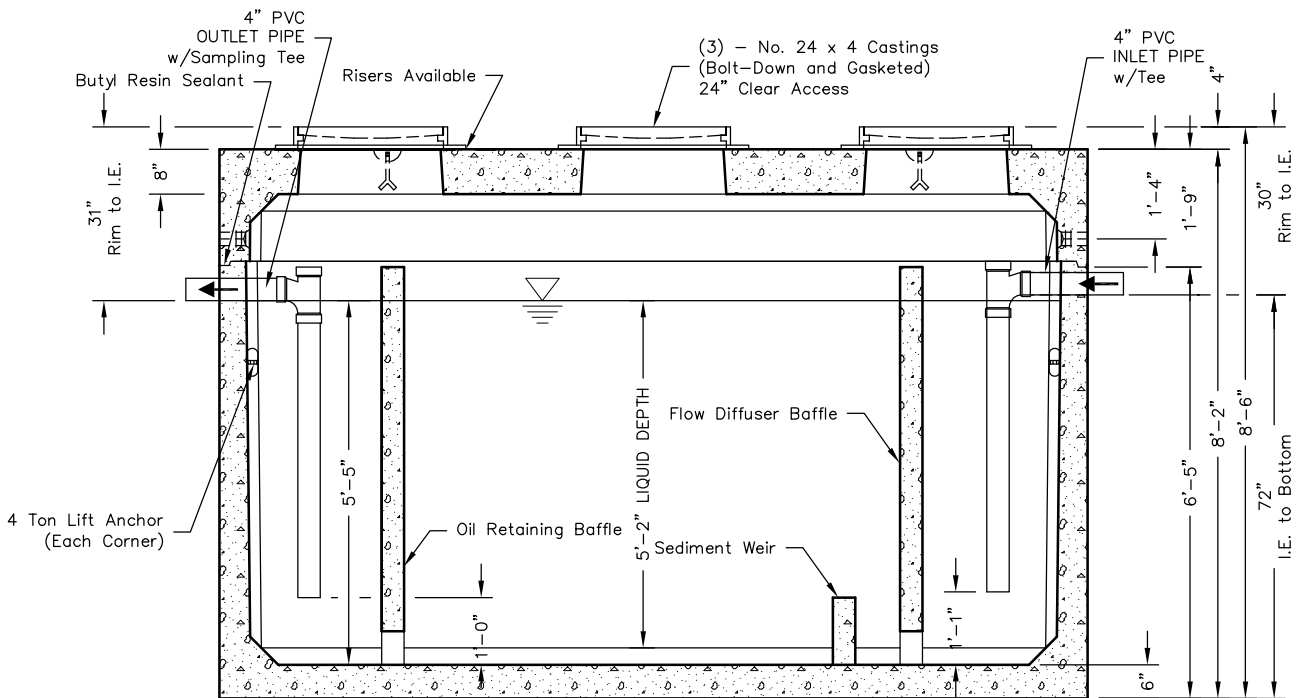
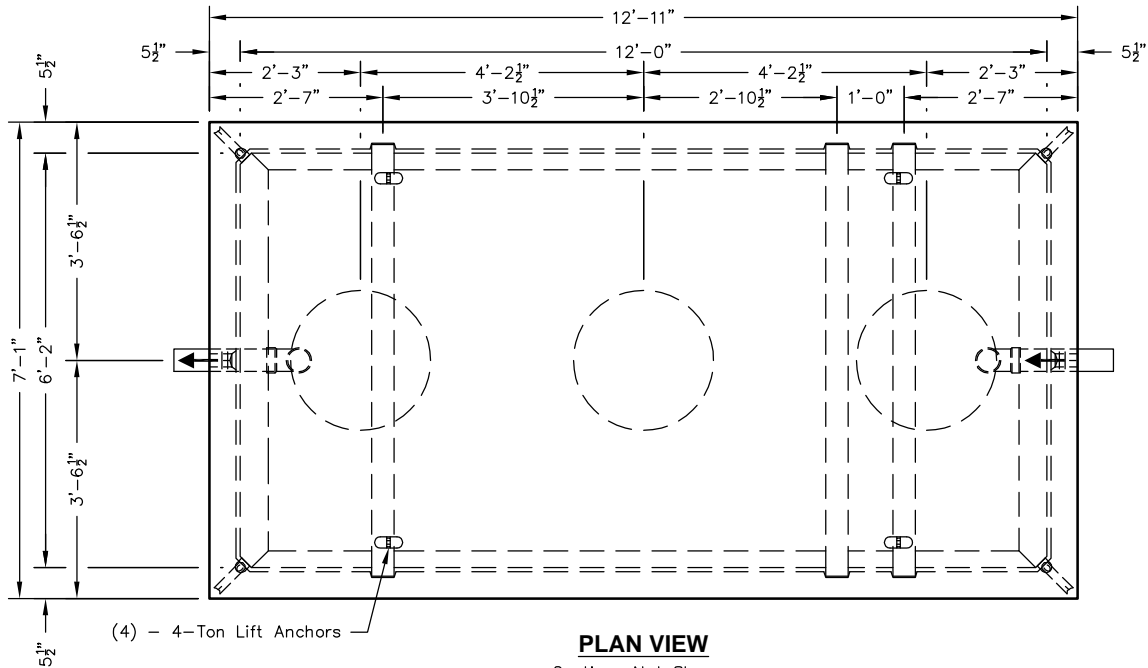
Note:
- Contractor is responsible for supplying crane to set and assemble vault.

Note: Designed for 0 to 5'-0" of Cover




 PO Box 323, Wilsonville, Oregon 97070-0323 Tel: (503) 682-2844 Fax: (503) 682-2657	612-SA-3000	612-SA-3000 OIL / WATER SEPARATOR 3000 GALLON - API STYLE
	File Name: 020-612SA-3000	
	Issue Date: 2016	
	oldcastleprecast.com/wilsonville	

612-SA-3000



Notes:

- Designed in accordance with ASTM C 890 for AASHTO HS20-44 vehicle loading
- Flow Rate 200 GPM based on 15 min. retention time.
- Manufacturer's recommendations:
 - 1.) Ventilate each end to open atmosphere.
 - 2.) Prior to "Start Up" of System, fill with clean water to bottom of outlet pipe (approx. one foot deep).
For best results, fill to flow line.
 - 3.) Follow Regular Inspection, Cleaning, & Maintenance Schedule (See Clean Out & Maintenance).

 <p>Oldcastle Precast®</p> <p>PO Box 323, Wilsonville, Oregon 97070-0323 Tel: (503) 682-2844 Fax: (503) 682-2657</p>	612-SA-3000	<p>612-SA-3000</p> <p>OIL / WATER SEPARATOR</p> <p>3000 GALLON - API STYLE</p>
	File Name: 020-612SA-3000	
	Issue Date: 2016	
	oldcastleprecast.com/wilsonville	