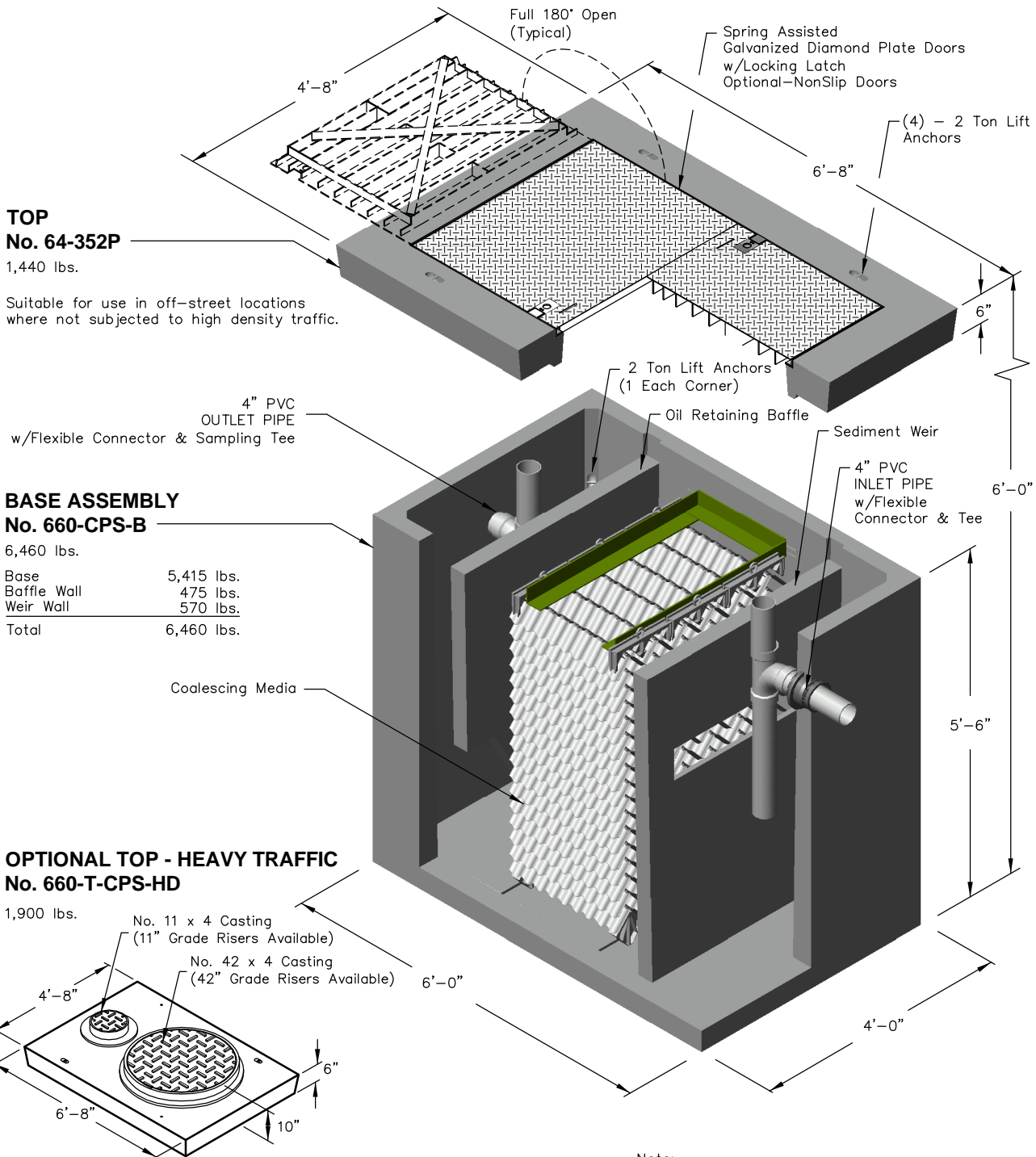



660-CPS

Projected Coalescing Plate Area = 444 Sq.Ft.
 *Design Flow Rate = 105 GPM (see back page)
 Maximum Process Flow = 565 GPM



Note: Designed for 0 to 5'-0" of Cover

Note:
 - 660-CPS is available set up for future installation of coalescing media and designated as 660-CPS-R.

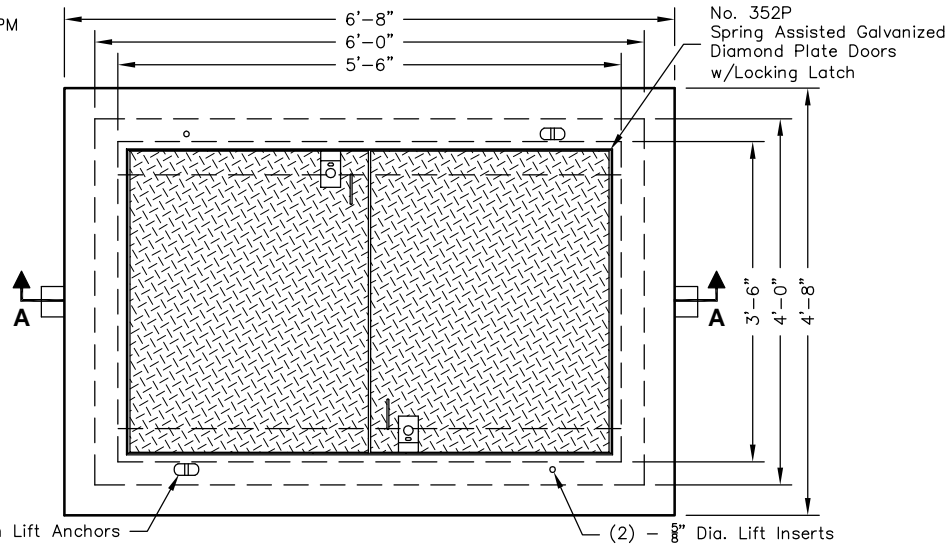
 Oldcastle Precast® PO Box 323, Wilsonville, Oregon 97070-0323 Tel: (503) 682-2844 Fax: (503) 682-2657	660-CPS	660-CPS OIL / WATER SEPARATOR COALESCING - 105 GPM
	File Name: 020-660CPS	
	Issue Date: 2018	
	oldcastleprecast.com/wilsonville	

660-CPS

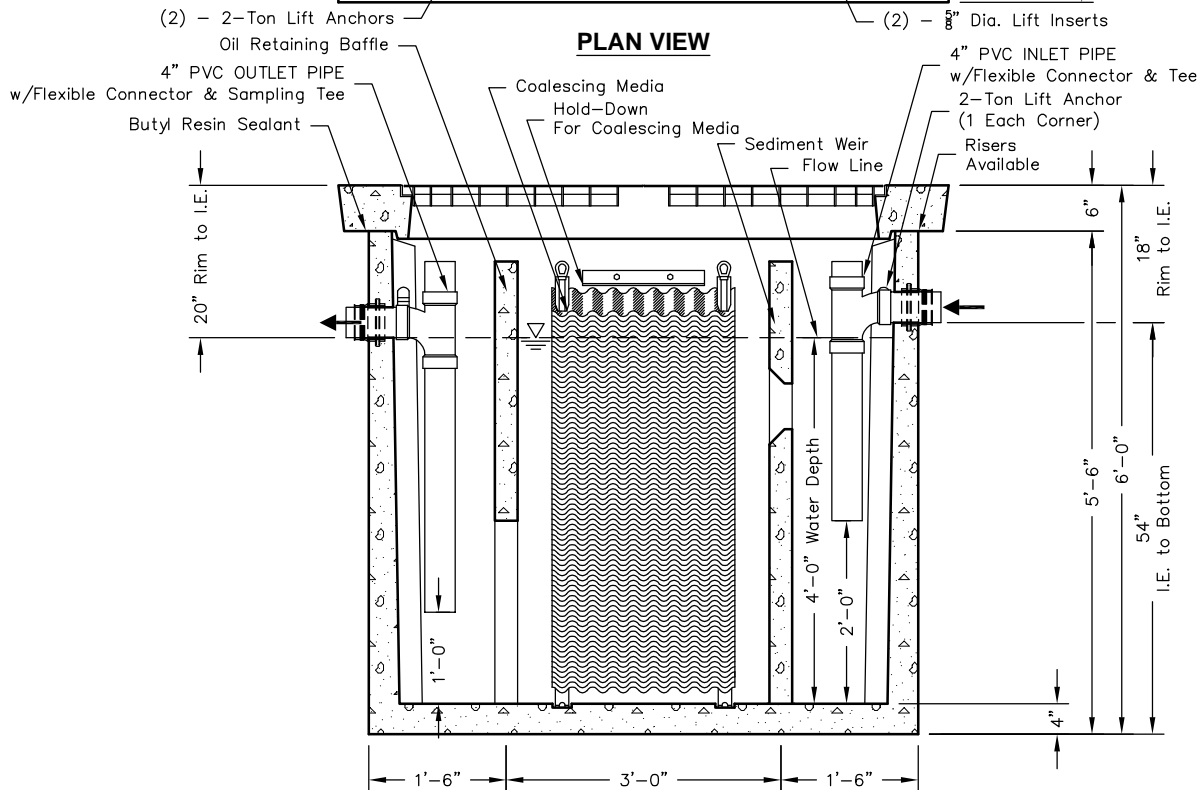
Projected Coalescing Plate Area = 444 Sq.Ft.

*Design Flow Rate = 105 GPM

Maximum Process Flow = 565 GPM



PLAN VIEW



SECTION AA

*DESIGN FLOW RATE	EFFLUENT QUALITY	100% COLLECTED SIZE
105 GPM	10 ppm	60 Micron


Basic Design Information: *

- Influent Characteristics
- Oil Specific Gravity = 0.88
 - Operating Temperature = 50°
 - Influent Oil Concentration = 100 ppm
 - Mean Oil Droplet Size = 130 Microns
 - .033 ft/min. Critical Oil Droplet Predicted Rise Rate

Notes:

- Static Water Depth = 4'-0"
- Prior to "Startup" of system, fill with clean water to bottom of outlet pipe. For best results, fill to flow line.
- Follow Regular Inspection, Cleaning, & Maintenance Schedule (See Clean Out & Maintenance).

*Basic Design Information per Washington State Department of Ecology; User to Adjust Estimates for Variations in Real Conditions.

 <p>PO Box 323, Wilsonville, Oregon 97070-0323 Tel: (503) 682-2844 Fax: (503) 682-2657</p>	<h2>660-CPS</h2>	<h2>660-CPS</h2> <h3>OIL / WATER SEPARATOR</h3> <h3>COALESCING - 105 GPM</h3>
	File Name: 020-660CPS	
	Issue Date: 2018	
	oldcastleprecast.com/wilsonville	