

712-SWITCH-PCORP

7 x 12, 15 kV, 600 Amp, PME-9/11 Switchgear Padvault, Stock Item 7992788
 7 x 12, 25 kV, 600 Amp, PME-9/11 Switchgear Padvault, Stock Item 7992789
 7 x 12, 15/25 kV, 600 Amp, PME-3 Switchgear 1000 kcmil cable, Padvault, Stock Item 7992790

TOP

15 kV, 600 Amp, PM9/11

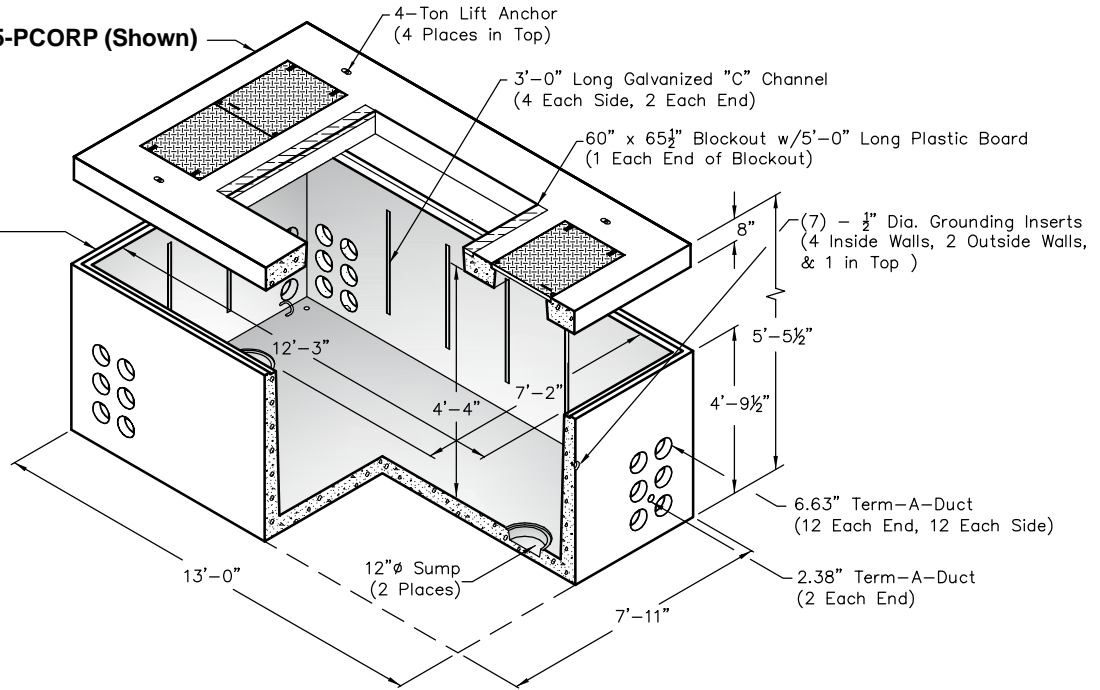
No. 95/156-T-2-25P-6065-PCORP (Shown)

PCORP #7992788
 5,230 lbs.

BASE

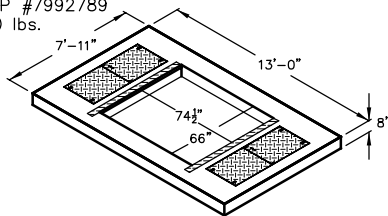
No. 712-B-PCORP

18,070 lbs.

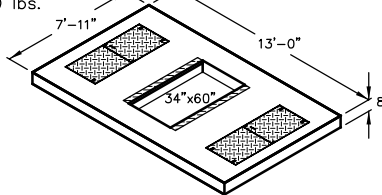


OPTIONAL TOPS

25 kV, 600 Amp, PME-9/11
 No. 95/156-T-2-25P-6674
 PCORP #7992789
 5,420 lbs.




15/25 kV, 600 Amp, PME-3
 No. 95/156-T-2-25P-3460
 PCORP #7992790
 7,400 lbs.



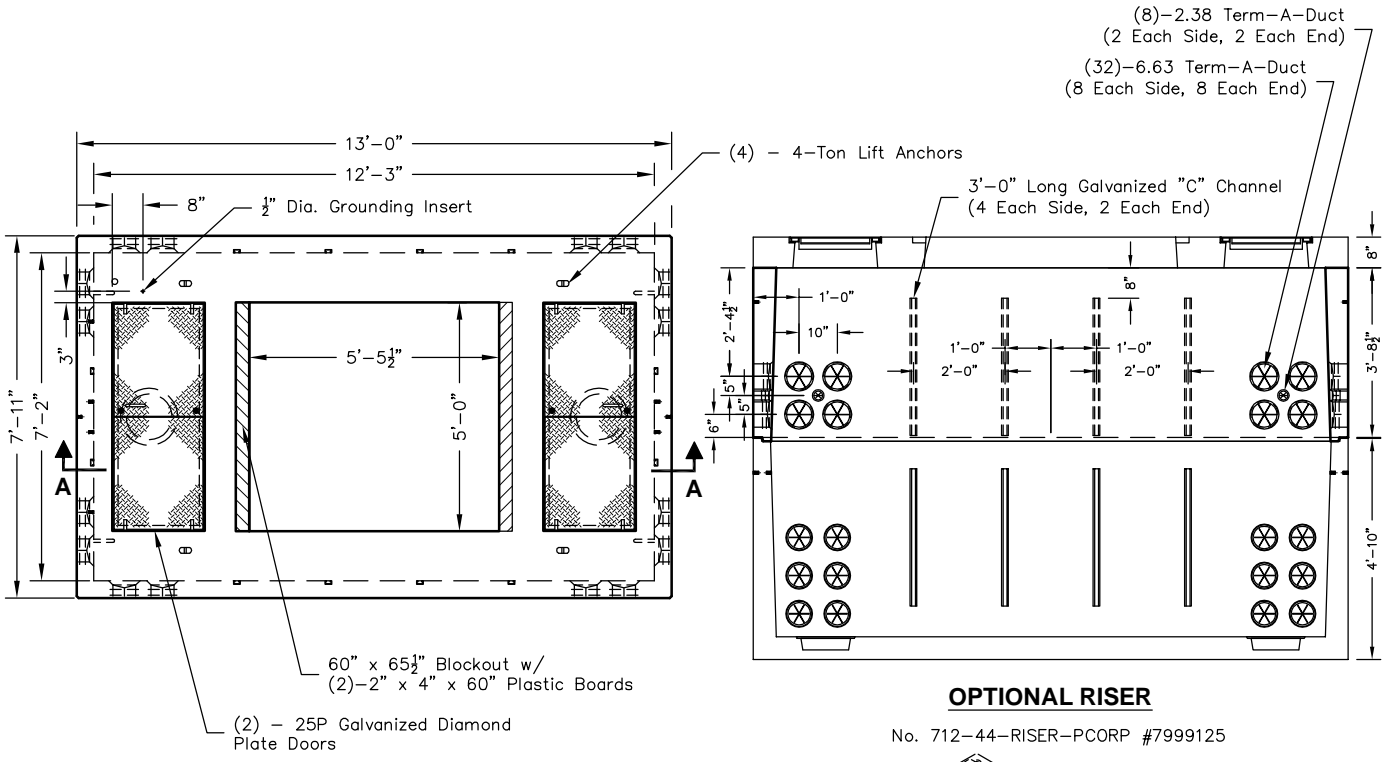
Note: All Switch Tops w/Ground

Note: Designed for 0 to 5'-0" of Cover

PCORP ZG711 7-13-12
PCORP ZG562 6-14-12

 <p>PO Box 323, Wilsonville, Oregon 97070-0323 Tel: (503) 682-2844 Fax: (503) 682-2657</p>	712-SWITCH-PCORP	712-SWITCH-PCORP 7 x 12 PACIFICORP
	File Name: 020-712SWITCH-PCORP	
	Issue Date: 2018	
	oldcastleprecast.com/wilsonville	

712-SWITCH-PCORP



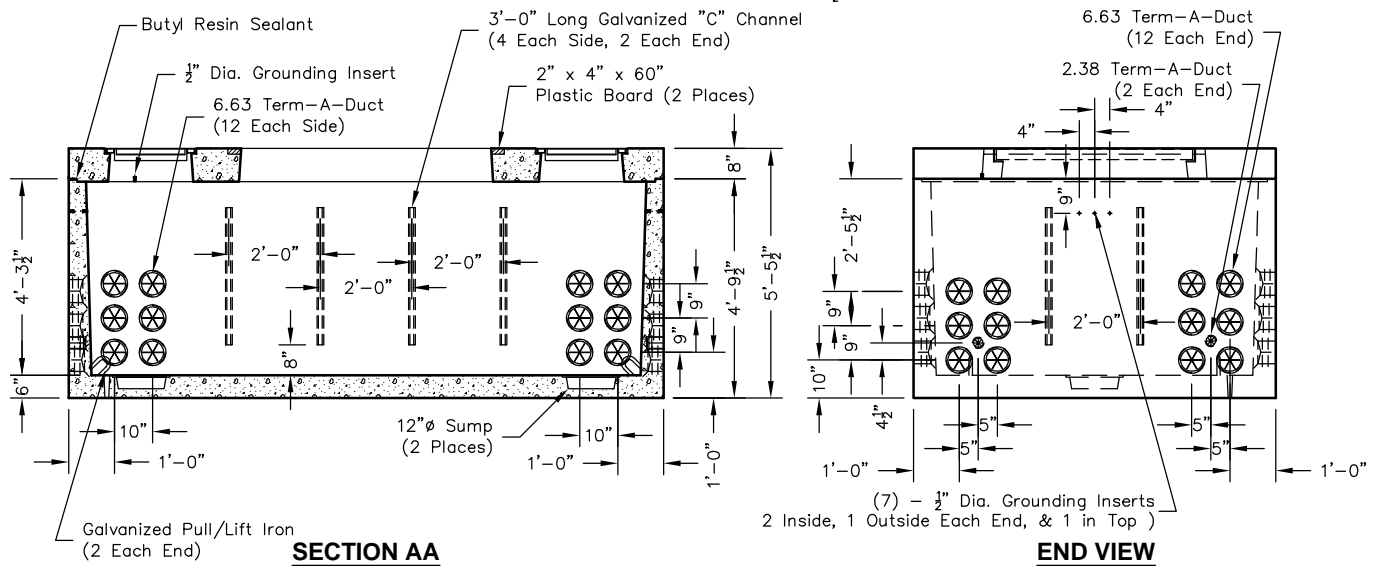
PLAN VIEW

No. 95/156-T-2-25P-6065
 (15 kV, 600 AMP, PM9/11 SWITCHGEAR TOP)
 PCORP #7992788



CABINET HOLD-DOWN CLEAT
 (4) - REQUIRED

- 1 1/4" x 2 1/2" Stainless Steel Hold-Down Cleat
- 1/2" x 2" Galvanized Lag Screw
- 3/4" Stainless Steel Belleville Washer



PCORP ZG715 7-13-12
PCORP ZG711 7-13-12
PCORP ZG562 6-14-12

<p>PO Box 323, Wilsonville, Oregon 97070-0323 Tel: (503) 682-2844 Fax: (503) 682-2657</p>	<p>712-SWITCH-PCORP</p>	<p>712-SWITCH-PCORP 7 x 12 PACIFICORP</p>
	File Name: 020-712SWITCH-PCORP	
	Issue Date: 2018	
	oldcastleprecast.com/wilsonville	