

776-SWITCH-PCORP

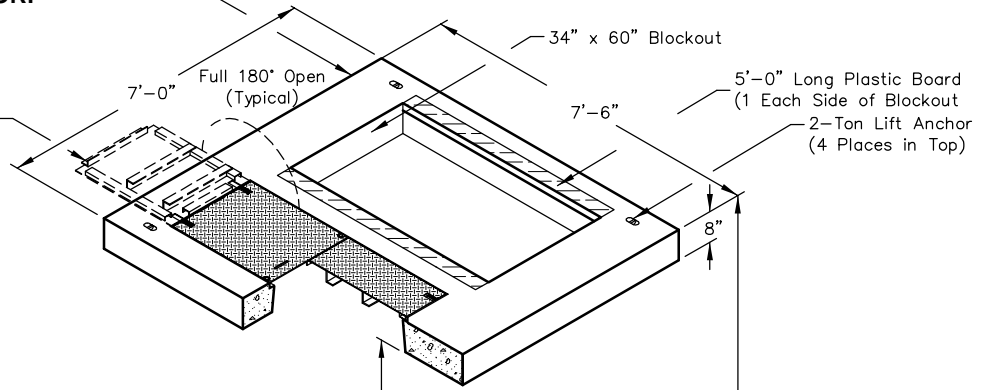
7 x 7, 15 kV, 600 Amp, PME-3 Switchgear Padvault, Stock Item 7992787

TOP

No. 8490-8-T-25P-3460-PCORP

PCORP #7992787
3,050 lbs.

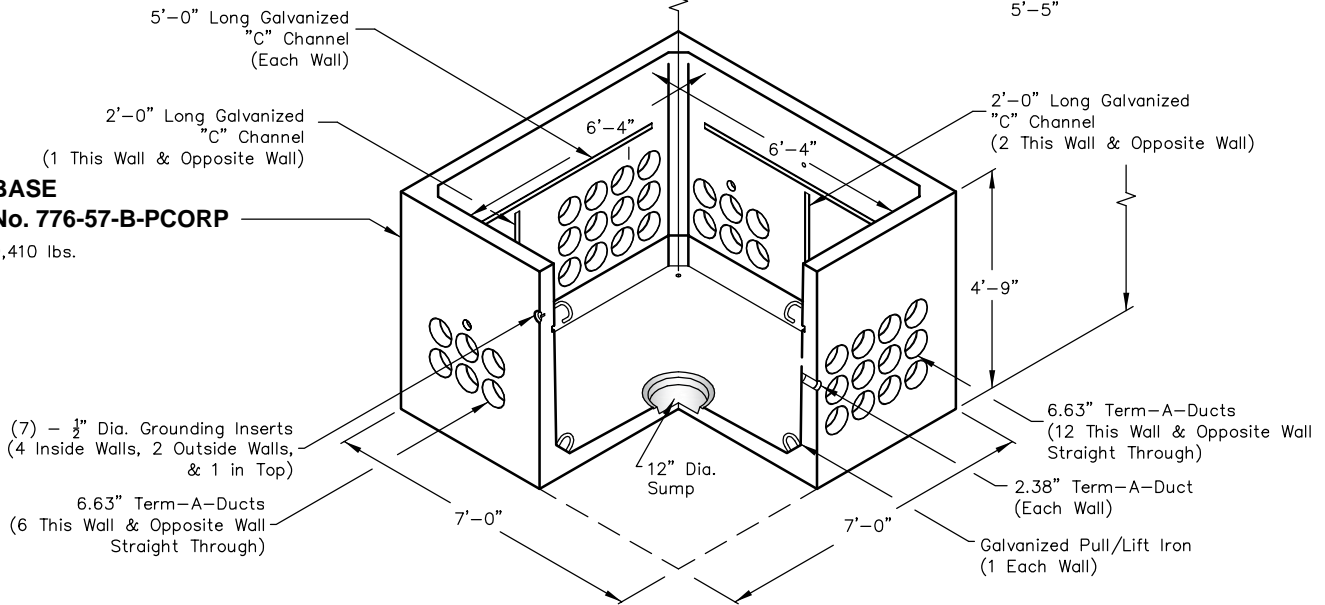
Galvanized Diamond Plate Doors
w/Locking Bolts
Optional-NonSlip Doors



BASE

No. 776-57-B-PCORP

9,410 lbs.




CABINET
HOLD-DOWN CLEAT
(4) - REQUIRED

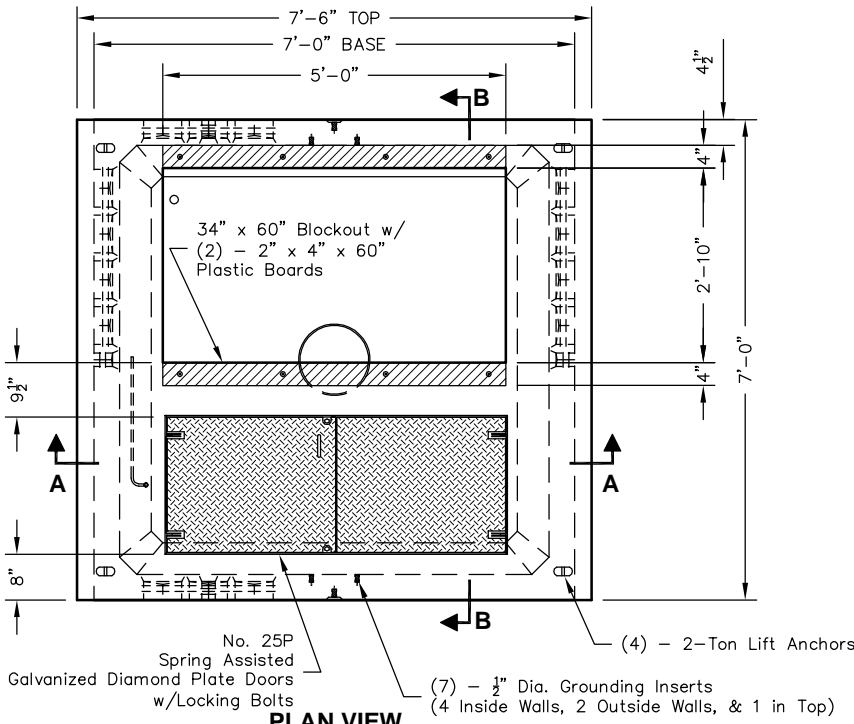
1 1/4" x 2 1/2" Stainless Steel Hold-Down Cleat
3/4" x 2" Galvanized Lag Screw
3/8" Stainless Steel Belleville Washer

PCORP ZG641 4-3-13
PCORP ZG521 6-13-13

Note: Designed for 0 to 5'-0" of Cover

 <p>PO Box 323, Wilsonville, Oregon 97070-0323 Tel: (503) 682-2844 Fax: (503) 682-2657</p>	<p>776-SWITCH-PCORP</p>	<p>776-SWITCH-PCORP 7 x 7 PACIFICORP</p>
	File Name: 020-776SWITCH-PCORP	
	Issue Date: 2018	
	oldcastleprecast.com/wilsonville	

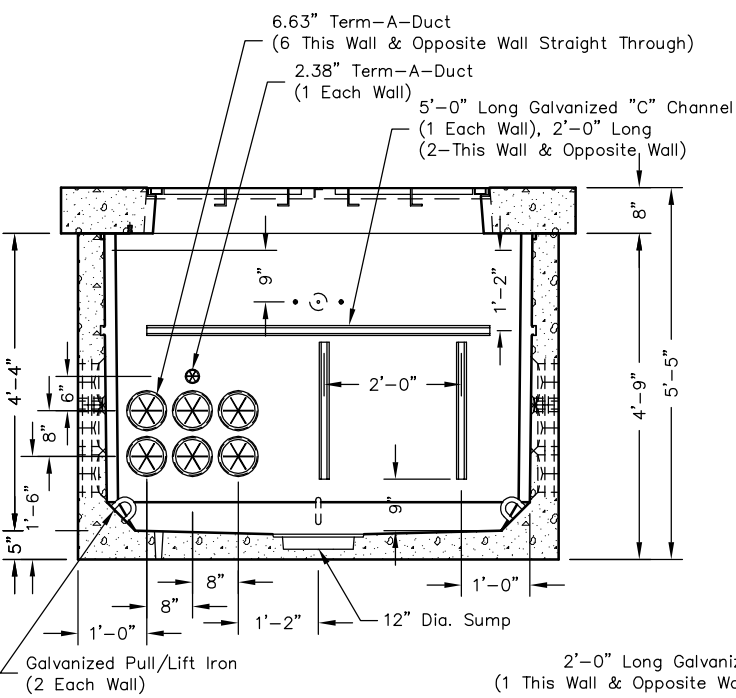
776-SWITCH-PCORP



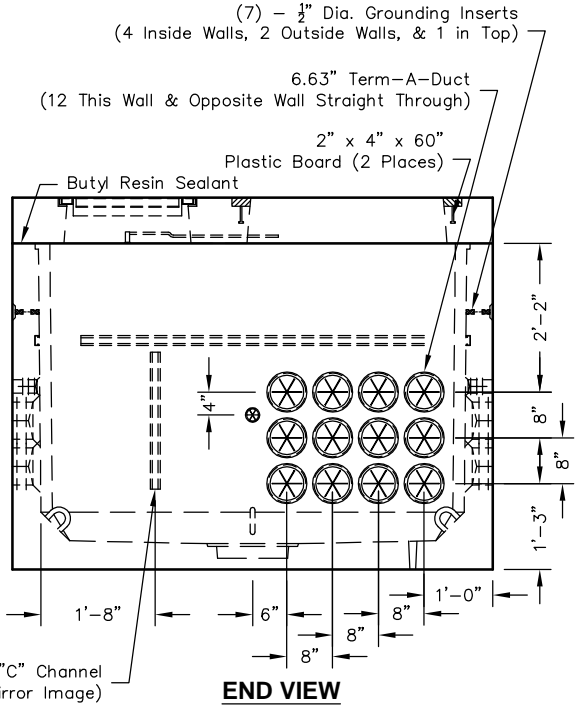
PLAN VIEW

No. 8490-8-T-25P-3460
 (15 kV, PME-3 SWITCHGEAR TOP)
 PCORP #7992787

-  CABINET HOLD-DOWN CLEAT (4) - REQUIRED
- 1 1/2" x 2 1/2" Stainless Steel Hold-Down Cleat
- 1/2" x 2" Galvanized Lag Screw
- 2" Stainless Steel Belleville Washer




SECTION AA



END VIEW

PCORP ZG641 4-3-13
PCORP ZG521 6-13-13

 <p>PO Box 323, Wilsonville, Oregon 97070-0323 Tel: (503) 682-2844 Fax: (503) 682-2657</p>	<p>776-SWITCH-PCORP</p>	<p>776-SWITCH-PCORP 7 x 7 PACIFICORP</p>
	File Name: 020-776SWITCH-PCORP	
	Issue Date: 2018	
	oldcastleprecast.com/wilsonville	