

816-2-CPS

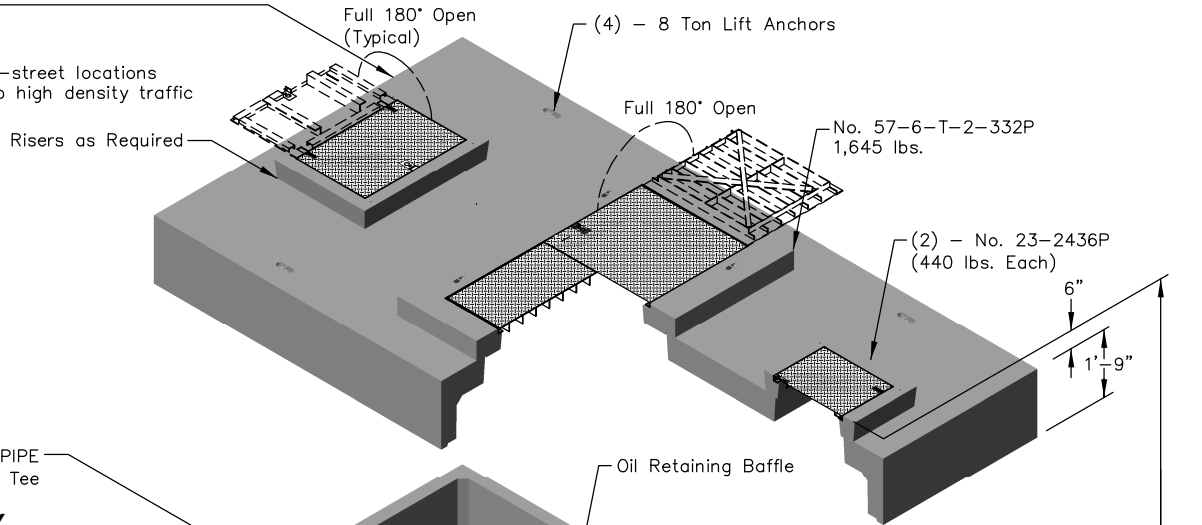
Projected Coalescing Plate Area = 2,368 Sq.Ft.
 *Design Flow Rate = 560 GPM (see back page)
 Maximum Process Flow = 1,508 GPM

TOP

No. 816-T-CPS

14,970 lbs.

Suitable for use in off-street locations
 where not subjected to high density traffic



BASE ASSEMBLY

No. 816-B-CPS

34,325 lbs.

Base	31,185 lbs.
Baffle Wall	1,530 lbs.
Weir Wall	1,610 lbs.
Total	34,325 lbs.

10" PVC OUTLET PIPE
 w/Sampling Tee

Oil Retaining Baffle

Coalescing Media

Sediment Weir

10" PVC INLET PIPE
 w/Tee 8'-8"

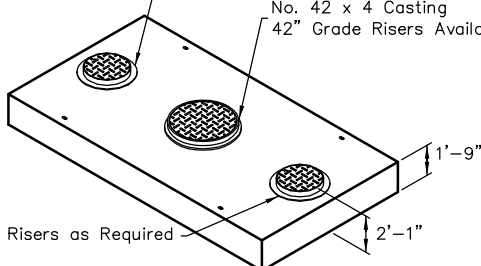
8 Ton Lift Anchors
 (2 Each End in Floor)

OPTIONAL TOP - HEAVY TRAFFIC

No. 816-T-CPS-HD

17,370 lbs.

(2) - No. 24 x 4 Castings
 (25" Grade Risers Available)
 No. 42 x 4 Casting
 42" Grade Risers Available



Note: Designed for 0 to 5'-0" of Cover

Notes:

- 816-CPS is available set up for future installation of coalescing media and designated as 816-CPS-R.
- Customer is responsible for supplying crane to set and assemble vault.



PO Box 323, Wilsonville, Oregon 97070-0323
 Tel: (503) 682-2844 Fax: (503) 682-2657

816-2-CPS

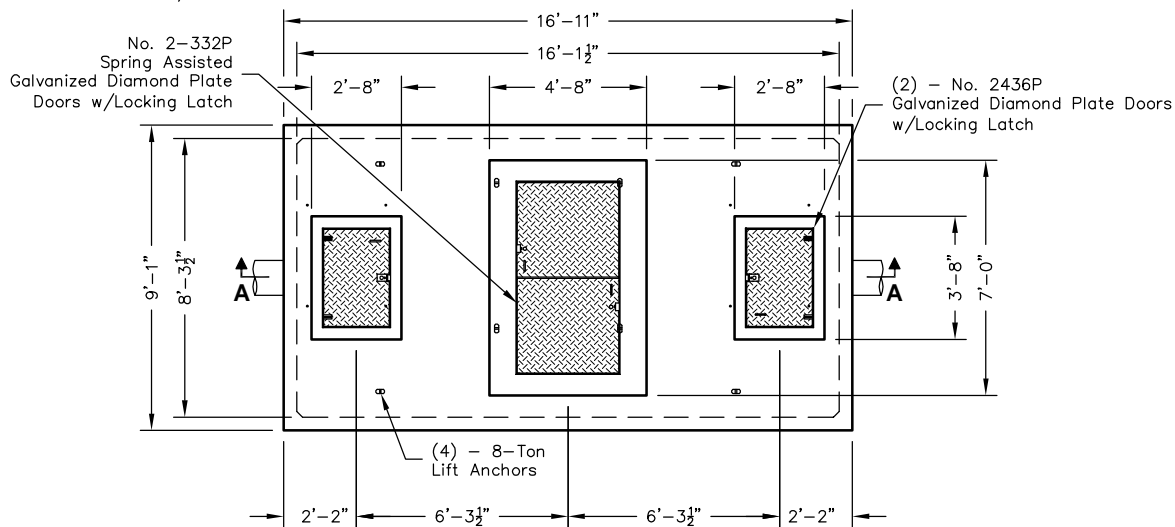
File Name: 020-816CPS2

Issue Date: 2018

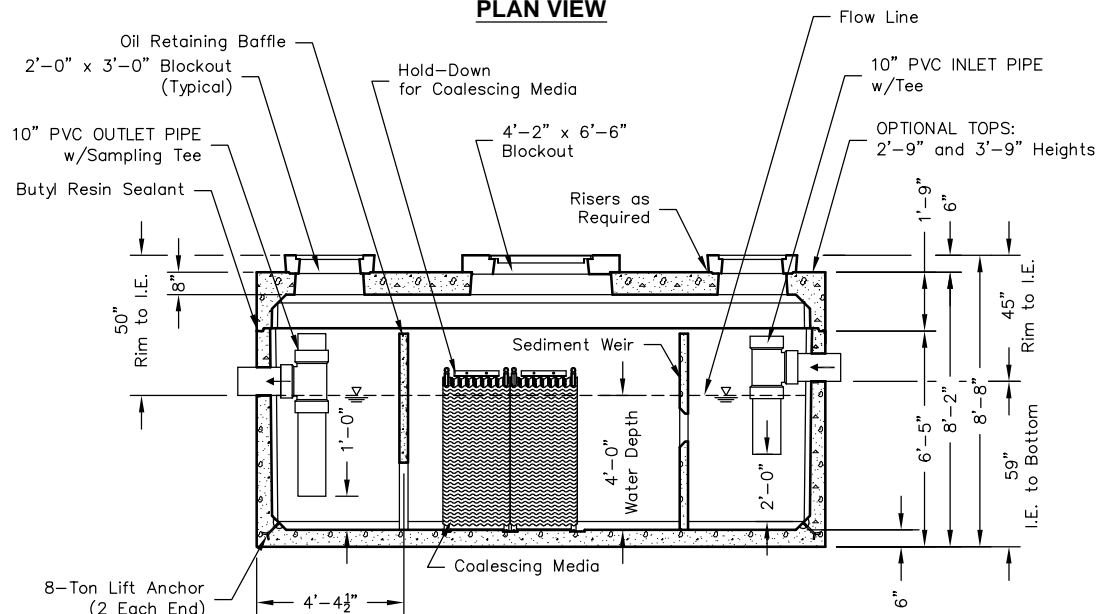
oldcastleprecast.com/wilsonville

816-2-CPS OIL / WATER SEPARATOR COALESCING - 560 GPM

Projected Coalescing Plate Area = 2,368 Sq.Ft.
*Design Flow Rate = 560 GPM
Maximum Process Flow = 1,508 GPM



PLAN VIEW



SECTION AA

*DESIGN FLOW RATE	EFFLUENT QUALITY	100% COLLECTED SIZE
560 GPM	10 ppm	60 Micron

Basic Design Information: *

Basic Design Information:

Influent Characteristics

- Oil Specific Gravity = 0.88
- Operating Temperature = 50°
- Influent Oil Concentration = 100 ppm
- Mean Oil Droplet Size = 130 Microns
- .033 ft/min. Critical Oil Droplet Predicted Rise Rate

*Basic Design Information per Washington State Department of Ecology; User to Adjust Estimates for Variations in Real Conditions.

Notes:

- Static Water Depth = 4'-0"
- Prior to "Startup" of system, fill with clean water to bottom of outlet pipe. For best results, fill to flow line.
- Follow Regular Inspection, Cleaning, & Maintenance Schedule (See Clean Out & Maintenance).



PO Box 323, Wilsonville, Oregon 97070-0323
Tel: (503) 682-2844 Fax: (503) 682-2657

816-2-CPS

File Name: 020-816CPS2

Issue Date: 2018

oldcastleprecast.com/wilsonville

816-2-CPS
OIL / WATER SEPARATOR
COALESCING - 560 GPM