

816-3-CPS

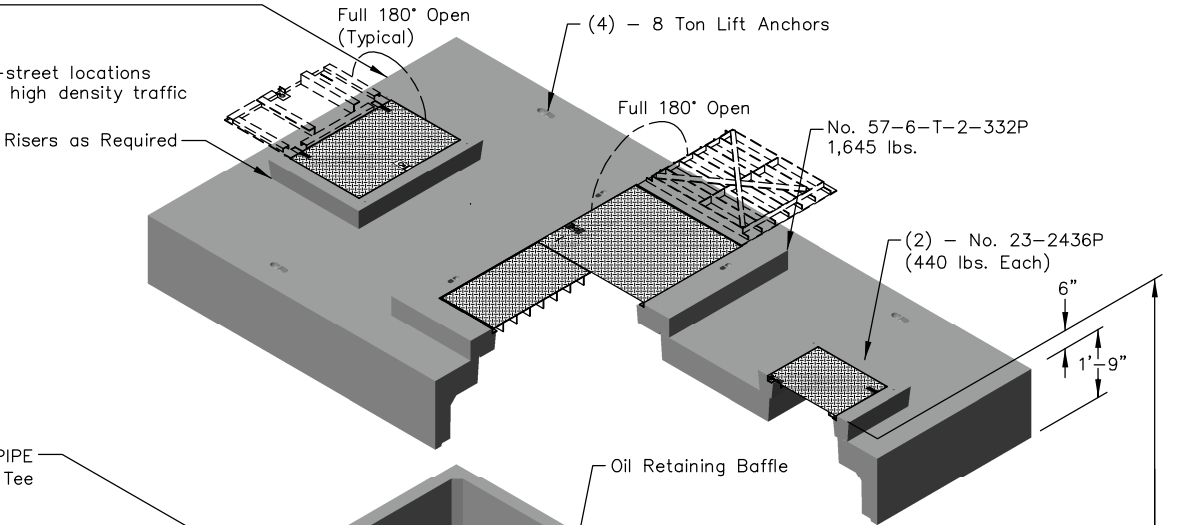
Projected Coalescing Plate Area = 3,552 Sq.Ft.
*Design Flow Rate = 840 GPM (see back page)
Maximum Process Flow = 1,508 GPM

TOP

No. 816-T-CPS

14,970 lbs.

Suitable for use in off-street locations where not subjected to high density traffic



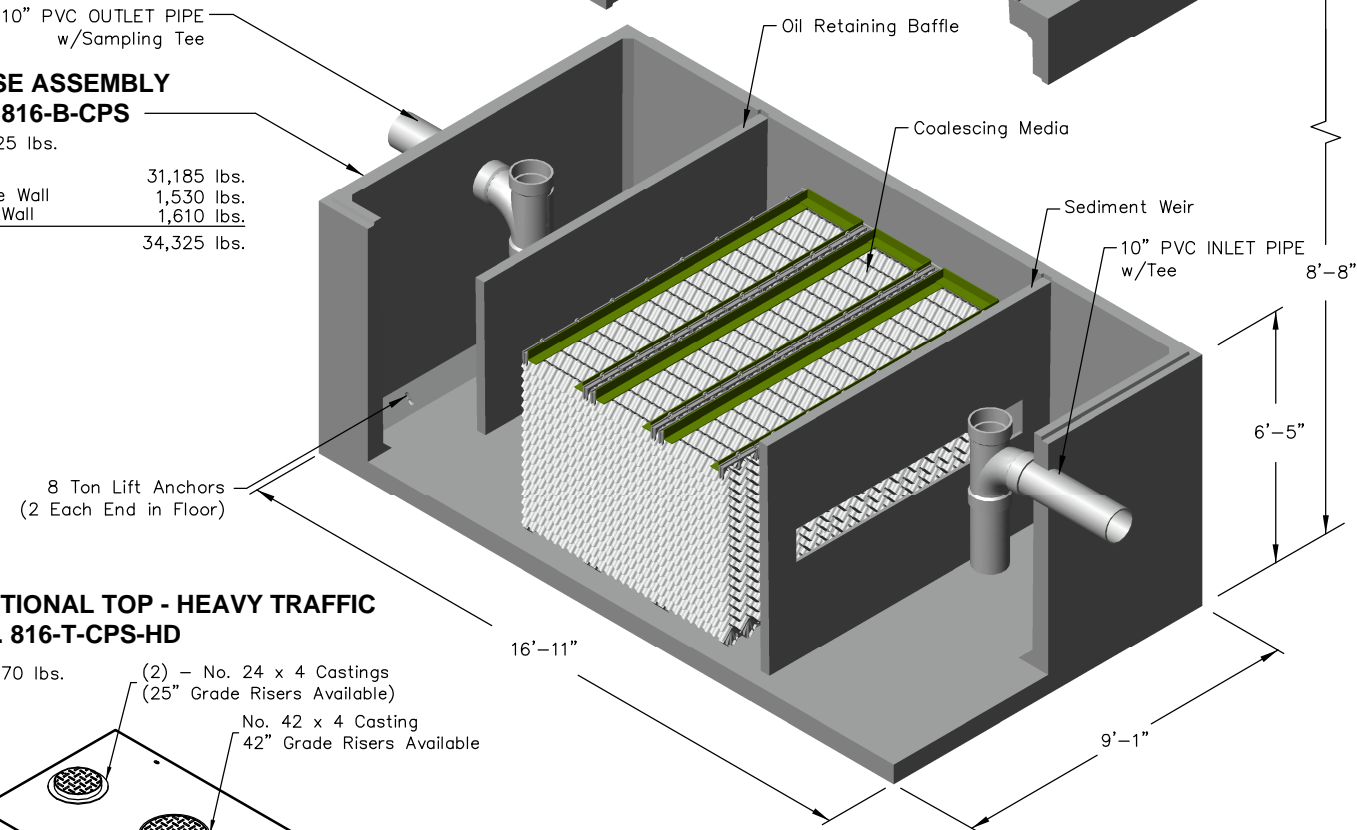
BASE ASSEMBLY

No. 816-B-CPS

34,325 lbs.

Base	31,185 lbs.
Baffle Wall	1,530 lbs.
Weir Wall	1,610 lbs.
Total	34,325 lbs.

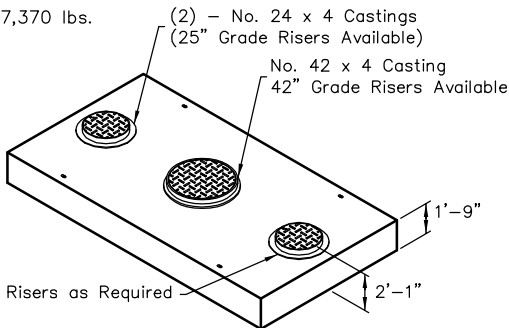
10" PVC OUTLET PIPE
w/Sampling Tee



OPTIONAL TOP - HEAVY TRAFFIC

No. 816-T-CPS-HD

17,370 lbs.



Note: Designed for 0 to 5'-0" of Cover

Notes:
- 816-CPS is available set up for future installation of coalescing media and designated as 816-CPS-R.
- Customer is responsible for supplying crane to set and assemble vault.



Oldcastle Precast®

PO Box 323, Wilsonville, Oregon 97070-0323
Tel: (503) 682-2844 Fax: (503) 682-2657

816-3-CPS

File Name: 020-816CPS3

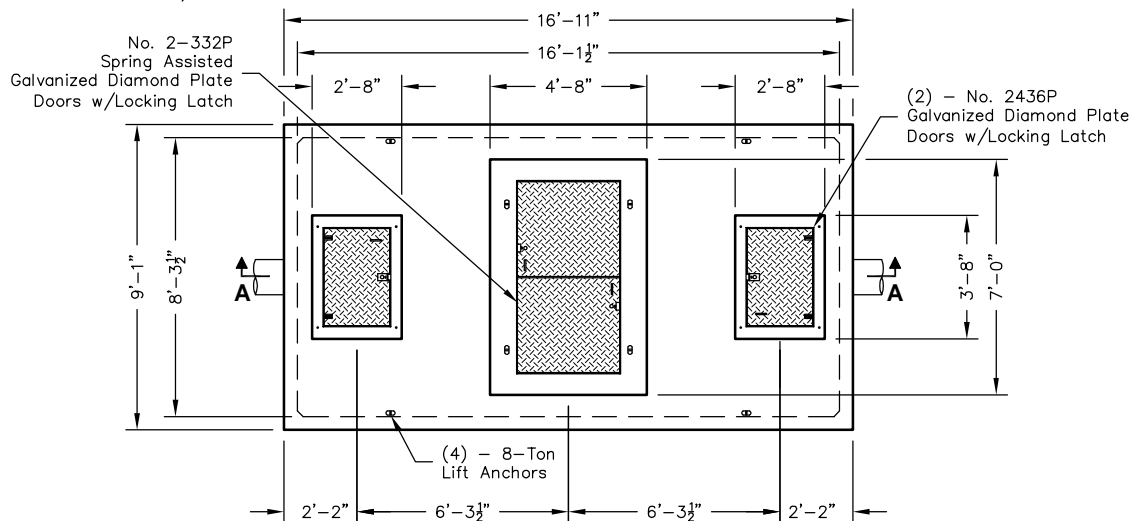
Issue Date: 2018

oldcastleprecast.com/wilsonville

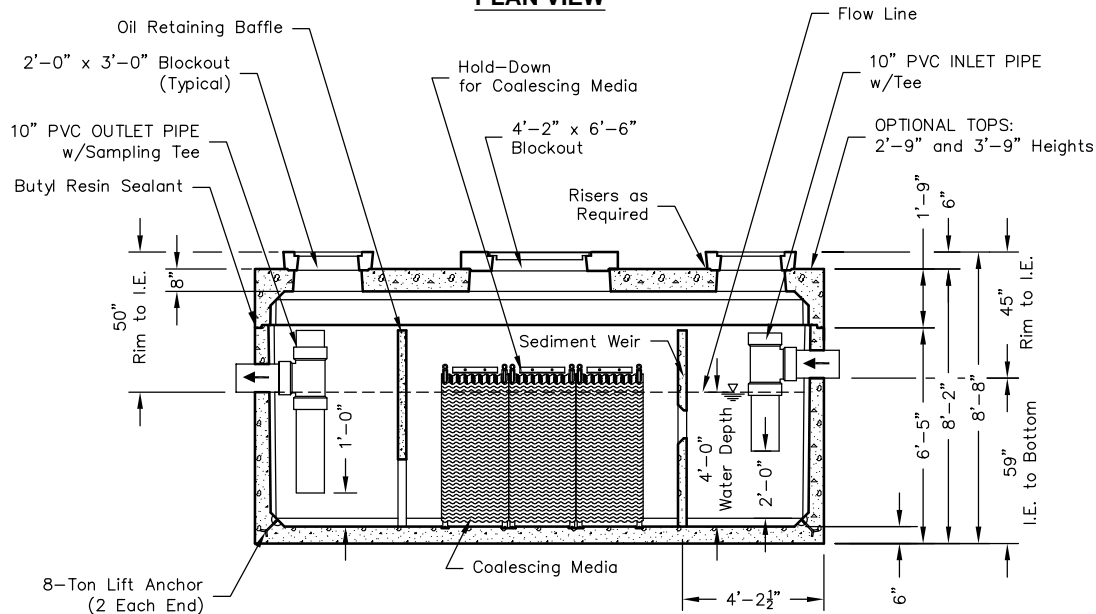
816-3-CPS
OIL / WATER SEPARATOR
COALESCING - 840 GPM

816-3-CPS

Projected Coalescing Plate Area = 3,552 Sq.Ft.
 *Design Flow Rate = 840 GPM
 Maximum Process Flow = 1,508 GPM



PLAN VIEW



SECTION AA

*DESIGN FLOW RATE	EFFLUENT QUALITY	100% COLLECTED SIZE
840 GPM	10 ppm	60 Micron

Basic Design Information: *

- Influent Characteristics
- Oil Specific Gravity = 0.88
 - Operating Temperature = 50°
 - Influent Oil Concentration = 100 ppm
 - Mean Oil Droplet Size = 130 Microns
 - .033 ft/min. Critical Oil Droplet Predicted Rise Rate

Notes:

- Static Water Depth = 4'-0"
- Prior to "Startup" of system, fill with clean water to bottom of outlet pipe. For best results, fill to flow line.
- Follow Regular Inspection, Cleaning, & Maintenance Schedule (See Clean Out & Maintenance).

*Basic Design Information per Washington State Department of Ecology; User to Adjust Estimates for Variations in Real Conditions.



PO Box 323, Wilsonville, Oregon 97070-0323
 Tel: (503) 682-2844 Fax: (503) 682-2657

816-3-CPS

File Name: 020-816CPS3

Issue Date: 2018

oldcastleprecast.com/wilsonville

816-3-CPS OIL / WATER SEPARATOR COALESCING - 840 GPM