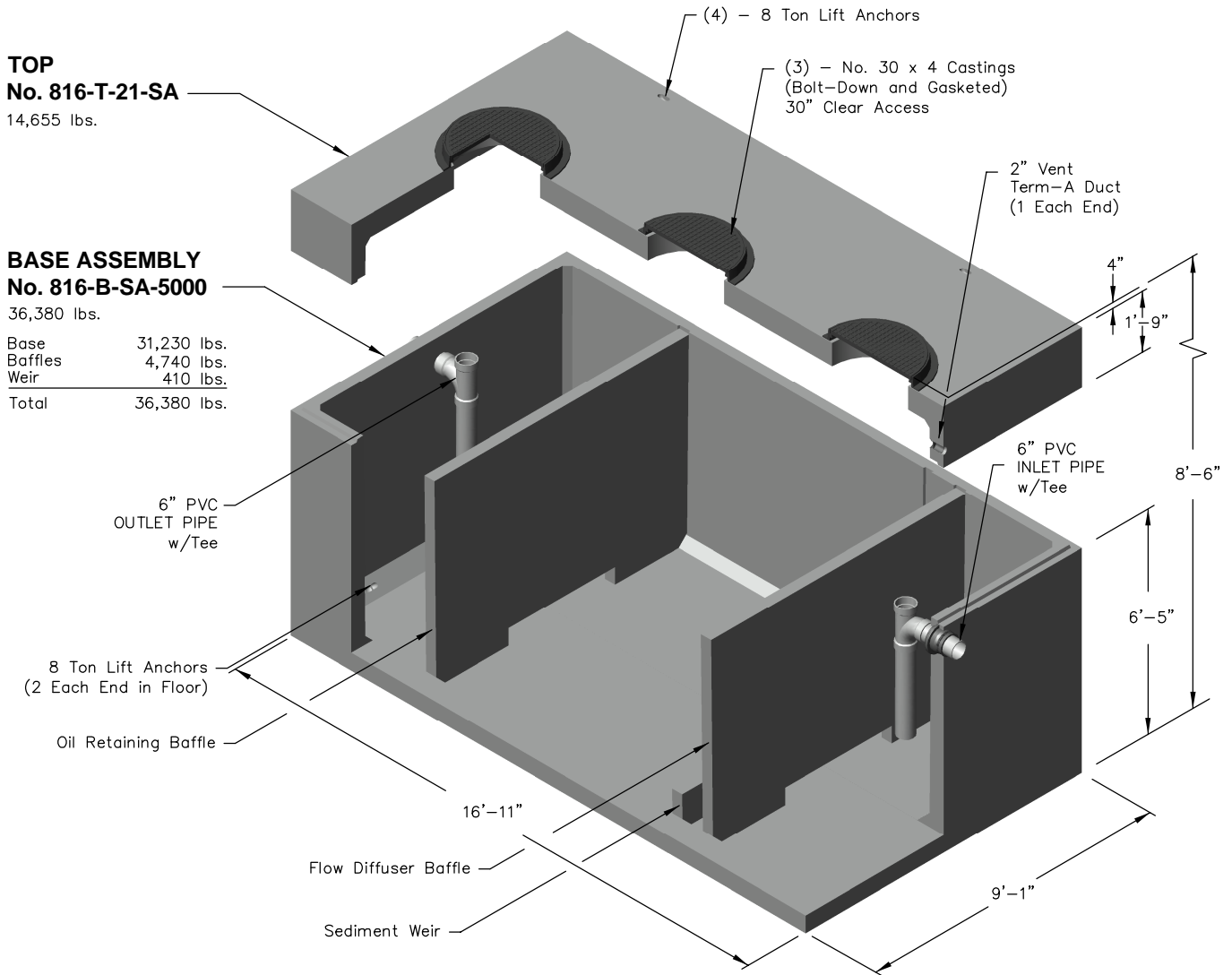


# 816-SA-5000



**TOP**  
**No. 816-T-21-SA**  
 14,655 lbs.

**BASE ASSEMBLY**  
**No. 816-B-SA-5000**  
 36,380 lbs.


Base	31,230 lbs.
Baffles	4,740 lbs.
Weir	410 lbs.
<b>Total</b>	<b>36,380 lbs.</b>

**Note:**

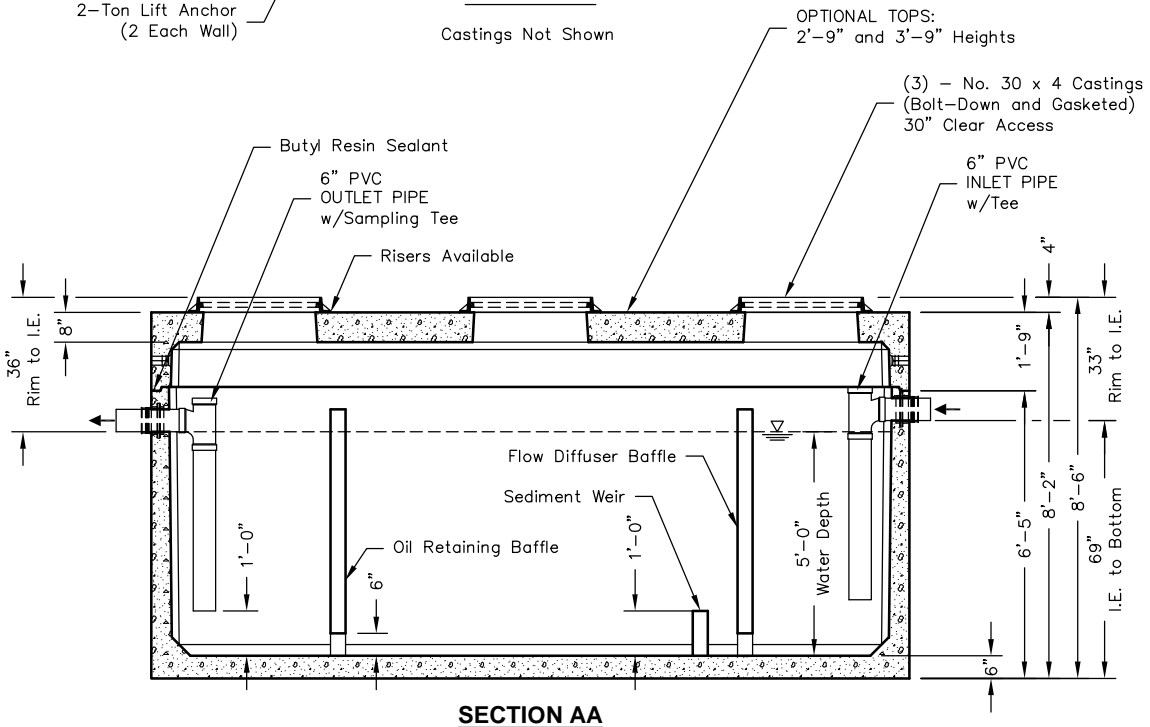
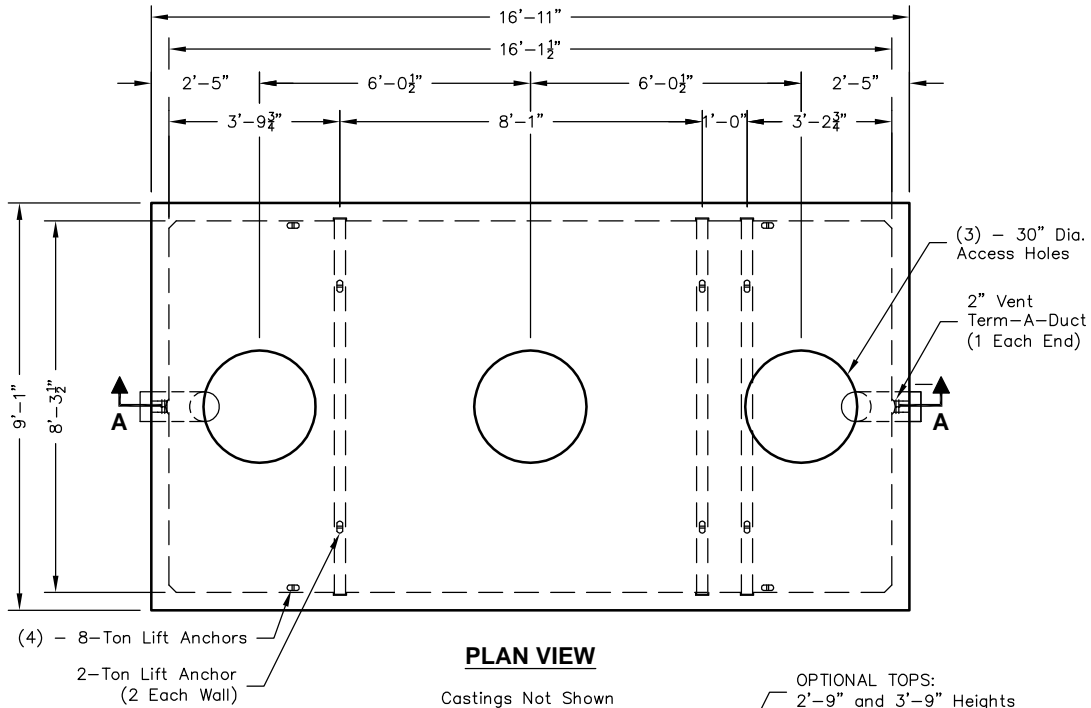
- Customer is responsible for supplying crane to set and assemble vault.

Note: Designed for 0 to 5'-0" of Cover



 <b>Oldcastle Precast®</b> PO Box 323, Wilsonville, Oregon 97070-0323 Tel: (503) 682-2844 Fax: (503) 682-2657	<b>816-SA-5000</b>	<b>816-SA-5000</b> <b>OIL / WATER SEPARATOR</b> <b>5000 GALLON - API STYLE</b>
	File Name: 020-816SA-5000	
	Issue Date: 2016	
	<a href="http://oldcastleprecast.com/wilsonville">oldcastleprecast.com/wilsonville</a>	

# 816-SA-5000



**Notes:**

- Designed in accordance with ASTM C 890 for AASHTO HS20-44 vehicle loading
- Flow Rate 333 GPM based on 15 min. retention time.
- Manufacturer's recommendations:
  - 1.) Ventilate each end to open atmosphere.
  - 2.) Prior to "Start Up" of System, fill with clean water to bottom of outlet pipe (approx. one foot deep). For best results, fill to flow line.
  - 3.) Follow Regular Inspection, Cleaning, & Maintenance Schedule (See Clean Out & Maintenance).

 PO Box 323, Wilsonville, Oregon 97070-0323 Tel: (503) 682-2844 Fax: (503) 682-2657	<b>816-SA-5000</b>	<b>816-SA-5000</b>
	File Name: 020-816SA-5000	<b>OIL / WATER SEPARATOR</b>
	Issue Date: 2016	<b>5000 GALLON - API STYLE</b>
	<a href="http://oldcastleprecast.com/wilsonville">oldcastleprecast.com/wilsonville</a>	