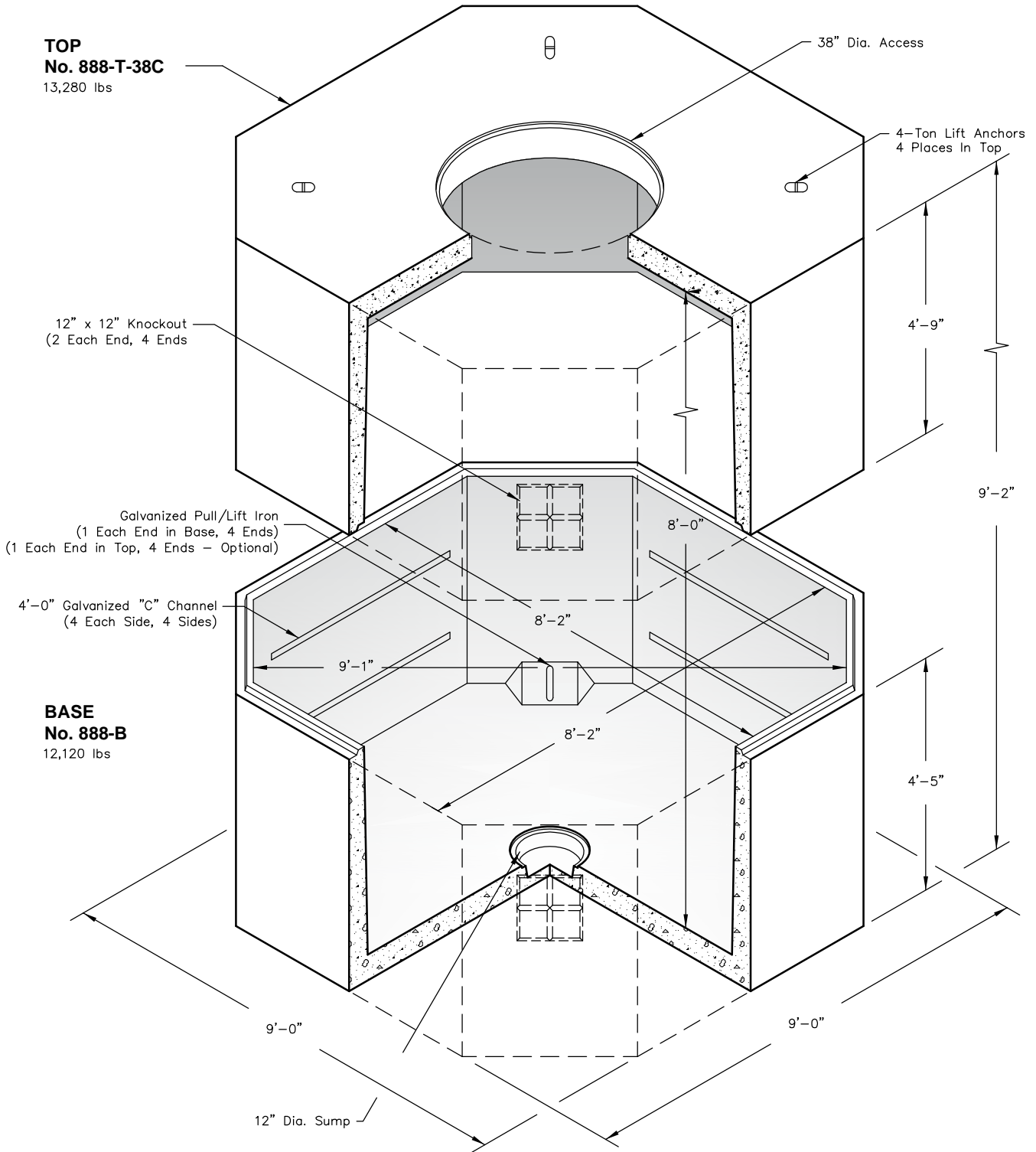



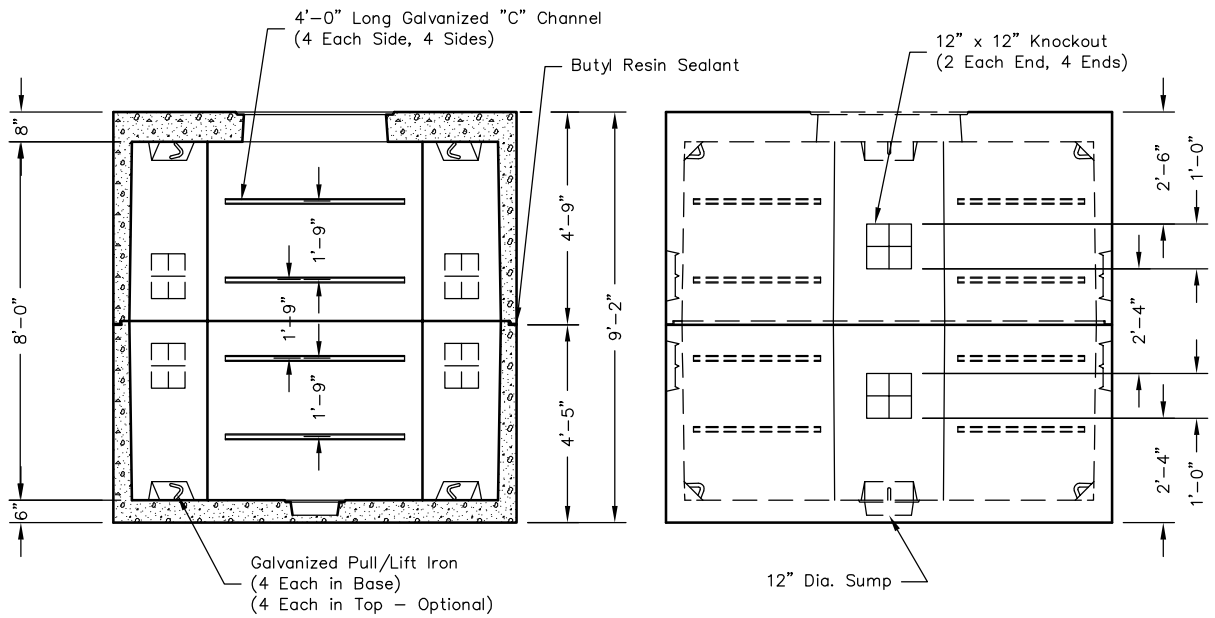
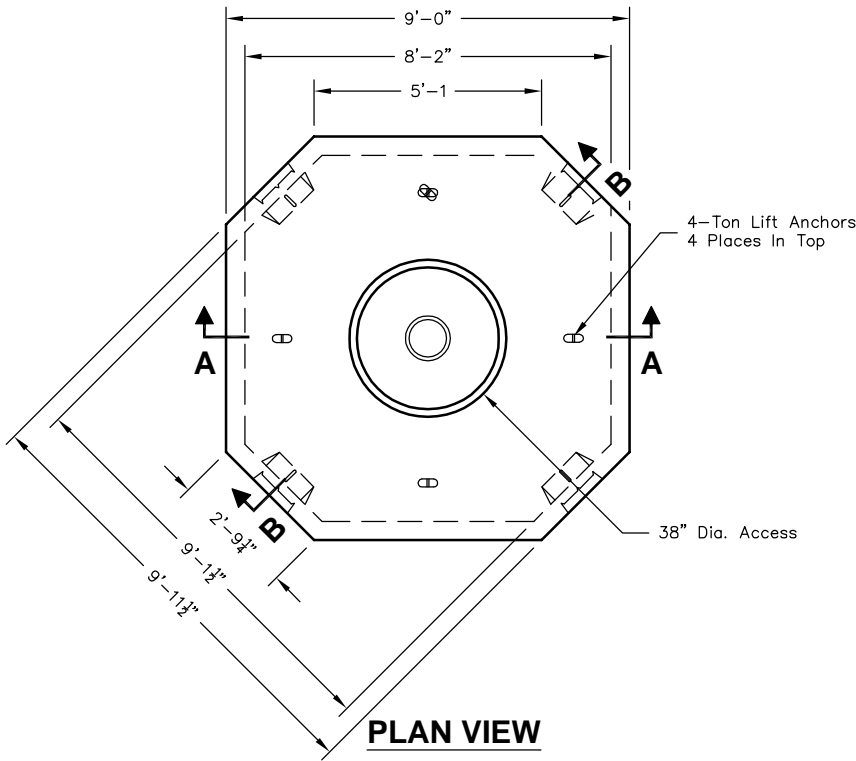
# 888-LA




Note: Designed for 0 to 5'-0" of Cover

 <b>Oldcastle Precast®</b> PO Box 323, Wilsonville, Oregon 97070-0323 Tel: (503) 682-2844 Fax: (503) 682-2657	<b>888-LA</b>	<b>888-LA</b> <b>8 x 8 - 2 PC.</b> <b>POWER / WATER / GAS</b>
	File Name: 020-888LA	
	Issue Date: 2016	
	<a href="http://oldcastleprecast.com/wilsonville">oldcastleprecast.com/wilsonville</a>	

# 888-LA



 <b>Oldcastle Precast®</b> PO Box 323, Wilsonville, Oregon 97070-0323 Tel: (503) 682-2844 Fax: (503) 682-2657	<b>888-LA</b>	<b>888-LA</b> <b>8 x 8 - 2 PC.</b> <b>POWER / WATER / GAS</b>
	File Name: 020-888LA	
	Issue Date: 2016	
	<a href="http://oldcastleprecast.com/wilsonville">oldcastleprecast.com/wilsonville</a>	