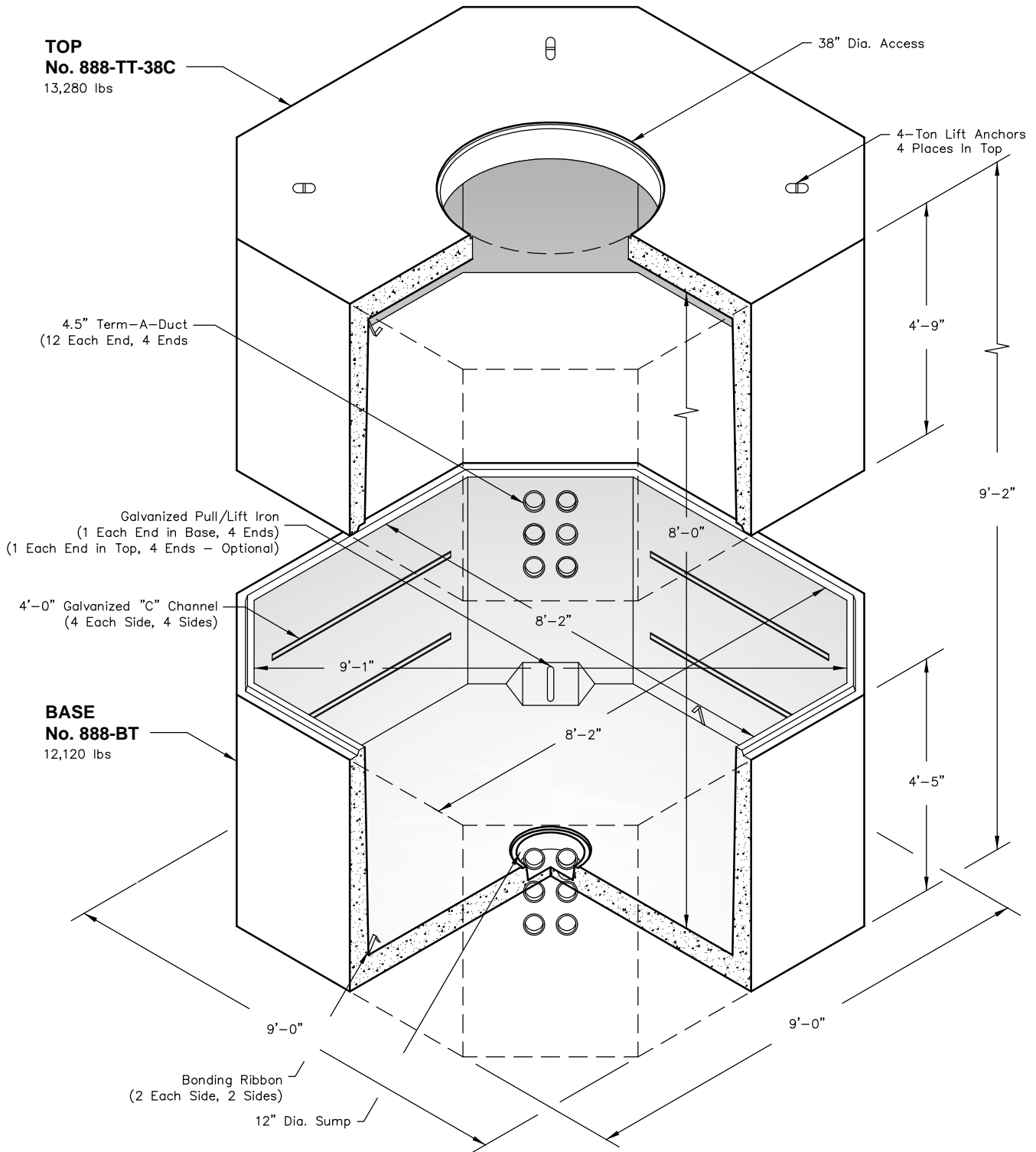



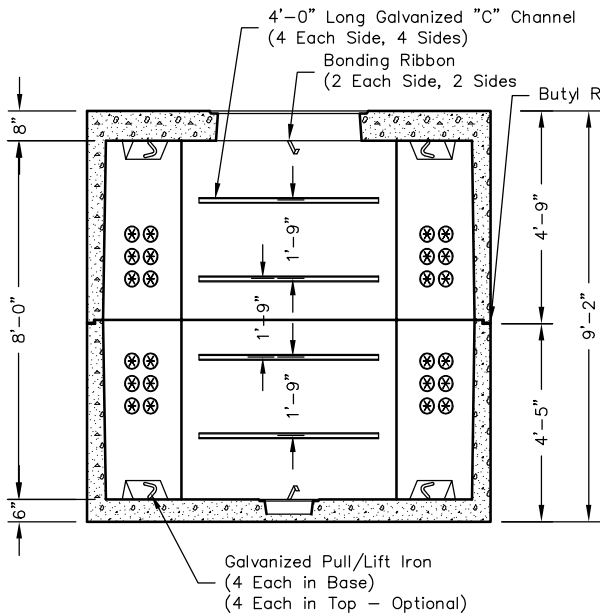
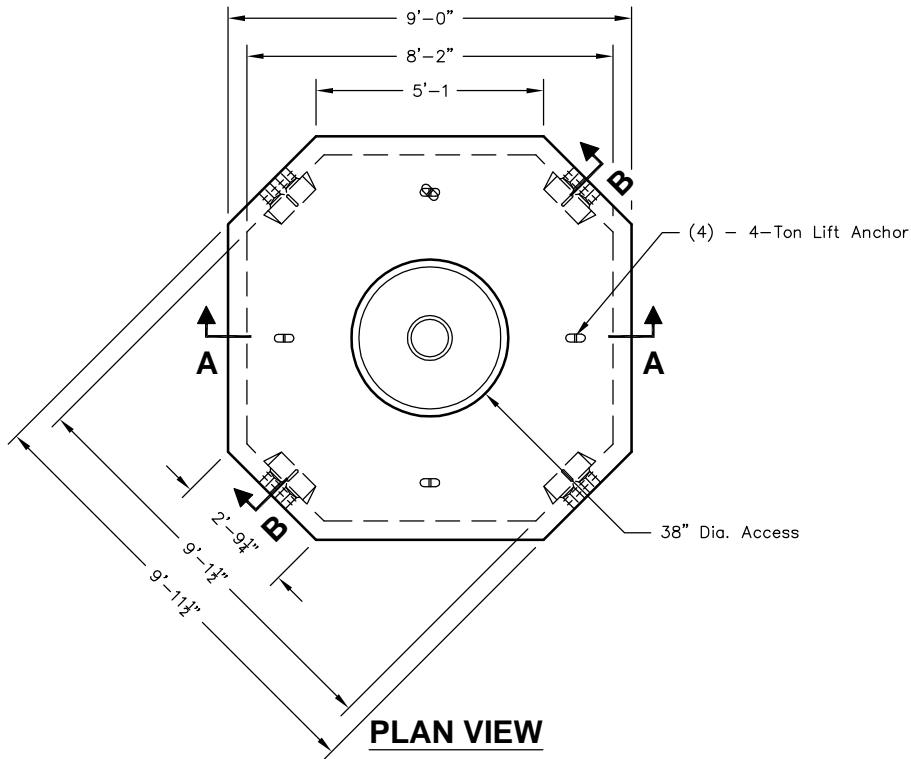
# 888-TA



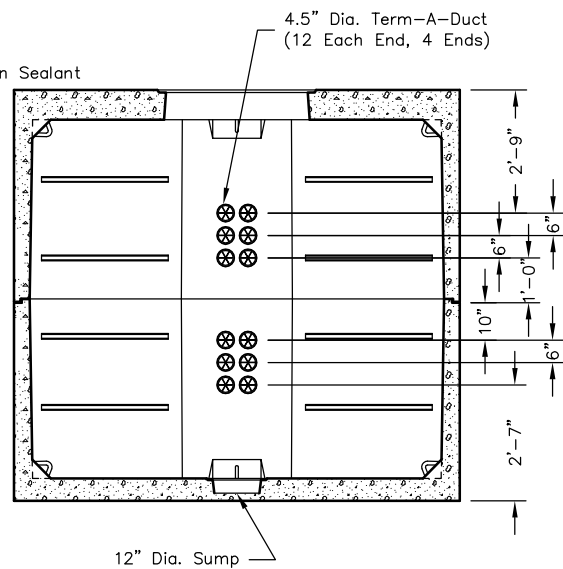
Note: Designed for 0 to 5'-0" of Cover

 <b>Oldcastle Precast®</b> PO Box 323, Wilsonville, Oregon 97070-0323 Tel: (503) 682-2844 Fax: (503) 682-2657	<b>888-TA</b>	<b>888-TA</b> <b>8 x 8 - 2 PC.</b> <b>COMMUNICATIONS</b>
	File Name: 020-888TA	
	Issue Date: 2016	
	<a href="http://oldcastleprecast.com/wilsonville">oldcastleprecast.com/wilsonville</a>	

# 888-TA



**SECTION AA**



**SECTION BB**



PO Box 323, Wilsonville, Oregon 97070-0323  
Tel: (503) 682-2844 Fax: (503) 682-2657

**888-TA**

File Name: 020-888TA

Issue Date: 2016

[oldcastleprecast.com/wilsonville](http://oldcastleprecast.com/wilsonville)

**888-TA  
8 x 8 - 2 PC.  
COMMUNICATIONS**