

OIL TRAP VAULT

TOP

No. 576-T-25C Top

5,340 lbs.

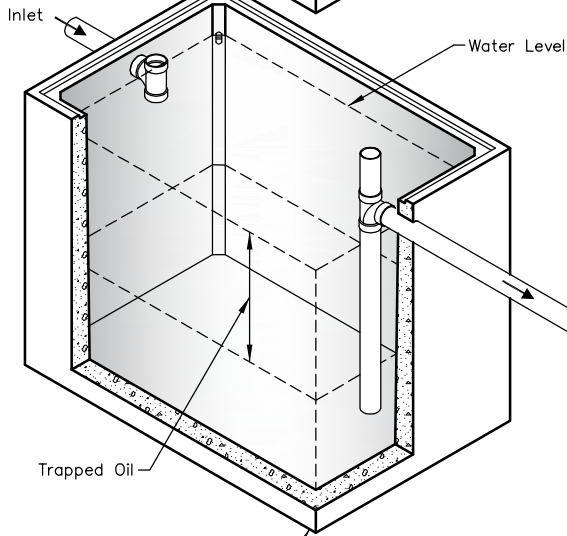
No. 24 x 4 Casting
(Bolt Down & Gasketed)
24" Clear Access

BASE

No. 576 Inlet Base

10,850 lbs.

Recommend
Catch Basin
Upstream from
Oil Trap Vault



OIL TRAP VAULT

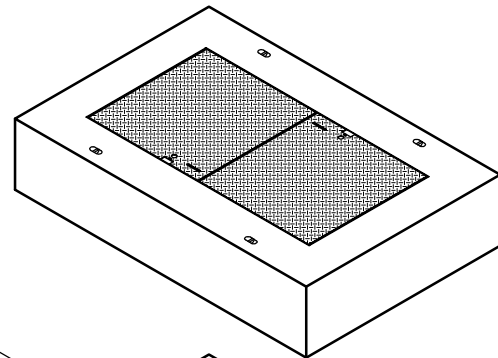
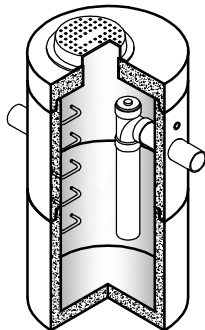
See 660/576 Inlet for Details

Note:

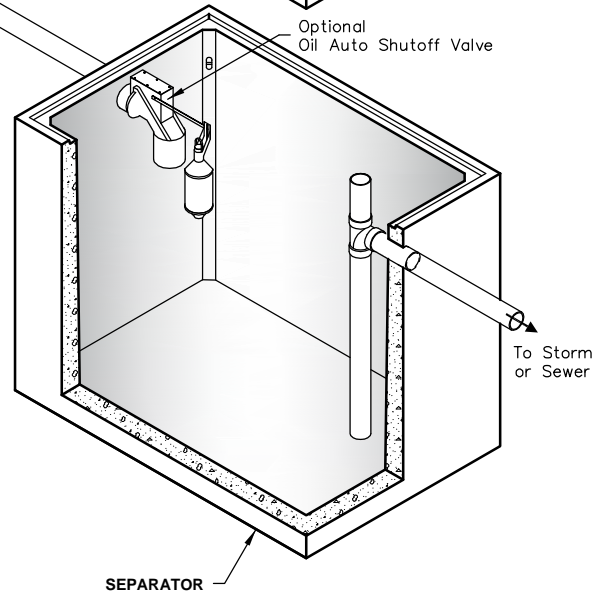
— Other Sizes as Required

OPTIONAL - Spill Control Manhole

(see 48" Manhole — Manholes & Drainage Section)



Optional
Oil Auto Shutoff Valve



PO Box 323, Wilsonville, Oregon 97070-0323
Tel: (503) 682-2844 Fax: (503) 682-2657

OIL TRAP VAULT

File Name: 020ECOILTRAP2

Issue Date: 2016

oldcastleprecast.com/wilsonville

OIL TRAP VAULT