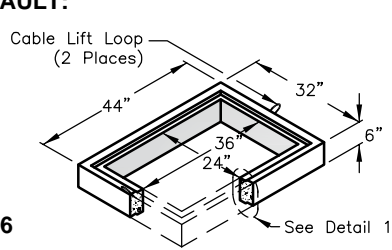
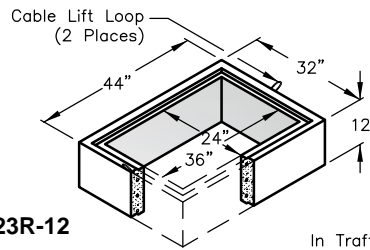


# 23 / 44 / 55 EXTENSIONS

## RISER EXTENSIONS FOR USE WITH VAULT: No. 233

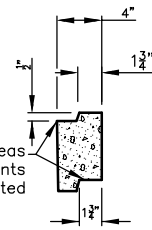


**No. 233R-6**  
6" Riser  
290 lbs.



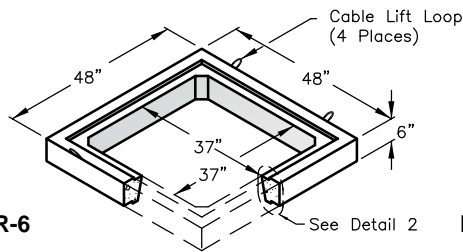
**No. 233R-12**  
12" Riser  
560 lbs.

In Traffic Areas  
These Joints  
Must Be Grouted

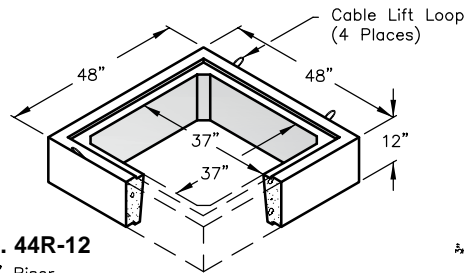


**Detail 1**

## RISER EXTENSIONS FOR USE WITH VAULTS: No. 444 No. 446

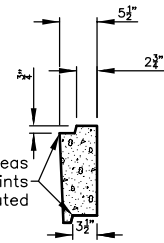


**No. 444R-6**  
6" Riser  
440 lbs.



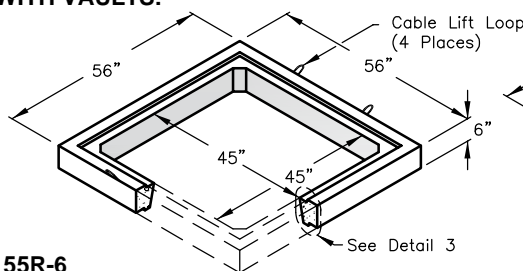
**No. 444R-12**  
12" Riser  
800 lbs.

In Traffic Areas  
These Joints  
Must Be Grouted

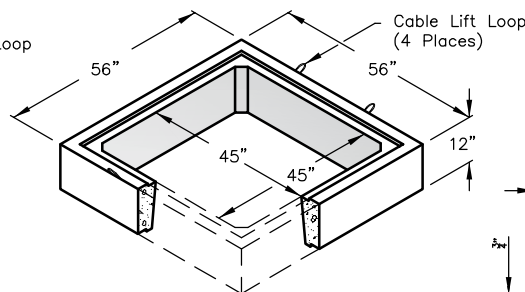


**Detail 2**

## RISER EXTENSIONS FOR USE WITH VAULTS: No. 504 No. 506

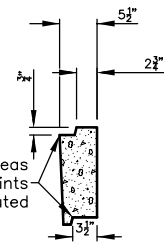


**No. 554R-6**  
6" Riser  
540 lbs.



**No. 554R-12**  
12" Riser  
960 lbs.

In Traffic Areas  
These Joints  
Must Be Grouted



**Detail 3**



PO Box 323, Wilsonville, Oregon 97070-0323  
Tel: (503) 682-2844 Fax: (503) 682-2657

### 23/44/55 EXTENSIONS

File Name: 020-SQRSRS1

Issue Date: 2016

[oldcastleprecast.com/wilsonville](http://oldcastleprecast.com/wilsonville)

## 23 / 44 / 55 RISER EXTENSIONS