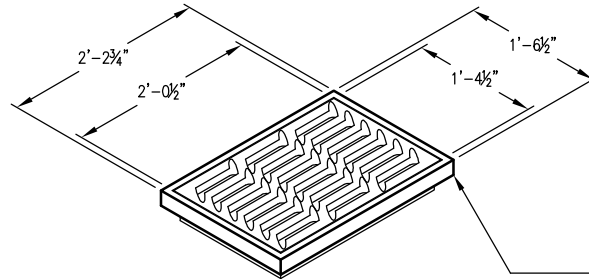


# CITY OF SALEM TYPE 1

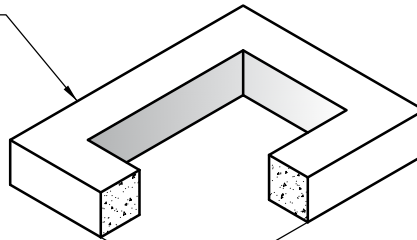


Frame and Grate Available Separately or w/ Frame Cast into 6" Concrete Slab (Meets Clark County, Wa. Specification)

## CITY OF SALEM TYPE 1 RISER

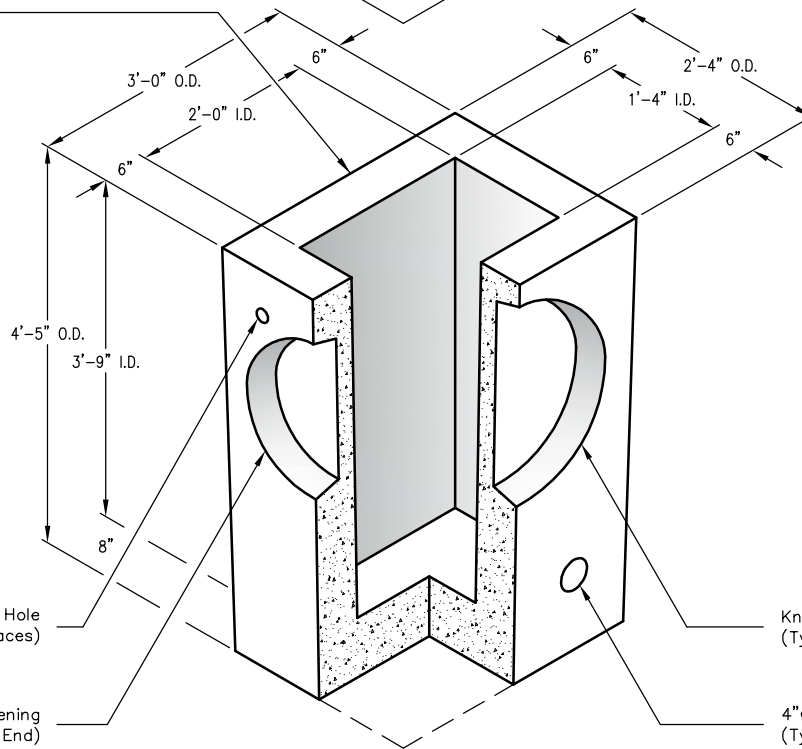
1,120 lbs.

Height	Weight
4"	180 lbs.
6"	275 lbs.
12"	535 lbs.



## CITY OF SALEM TYPE 1 BASE

1,120 lbs.



Lift Hole (Typical 2 Places)

Knockout 19"  $\emptyset$  Clear Opening (Typical 1 Each End)

Knockout 25"  $\emptyset$  Clear Opening (Typical 1 Each Side)

4"  $\emptyset$  Weep Hole (Typical 1 Each Side)

### NOTES:

1. MEETS CITY OF SALEM STANDARD PLAN NO. 200.
2. ALL DIMENSIONS SUBJECT TO ALLOWABLE SPECIFICATION TOLERANCES.



PO Box 323, Wilsonville, Oregon 97070-0323  
Tel: (503) 682-2844 Fax: (503) 682-2657

### CITY OF SALEM TYPE 1

File Name: 020-TYPE 1 SALEM

Issue Date: 2016

[oldcastleprecast.com/wilsonville](http://oldcastleprecast.com/wilsonville)

### CITY OF SALEM TYPE 1 CATCH BASIN