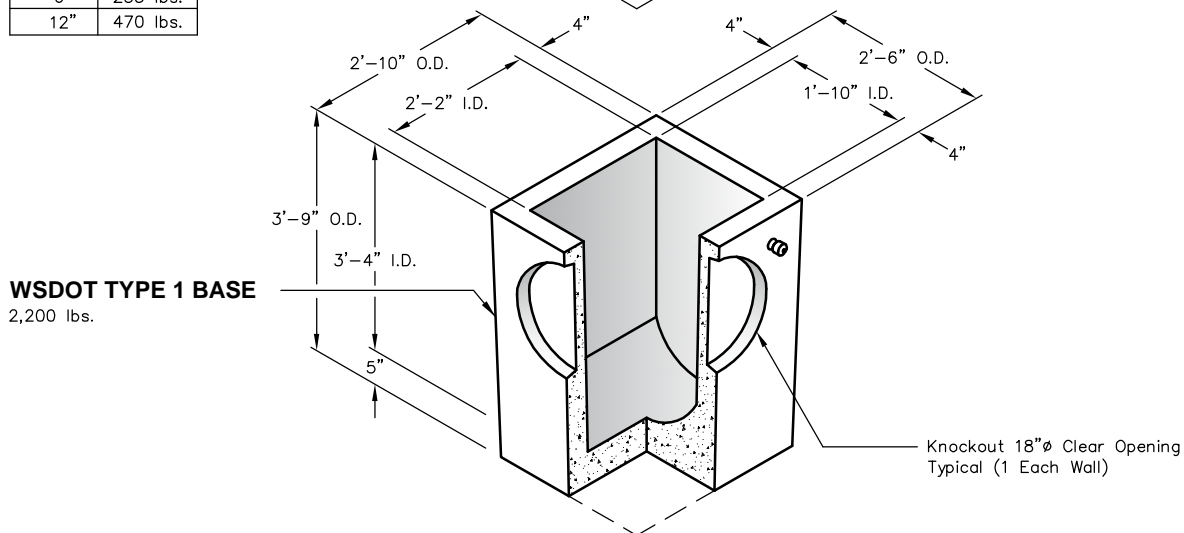
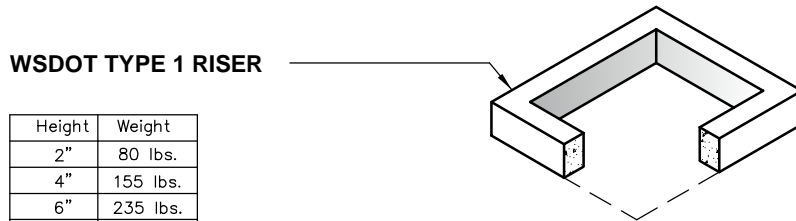
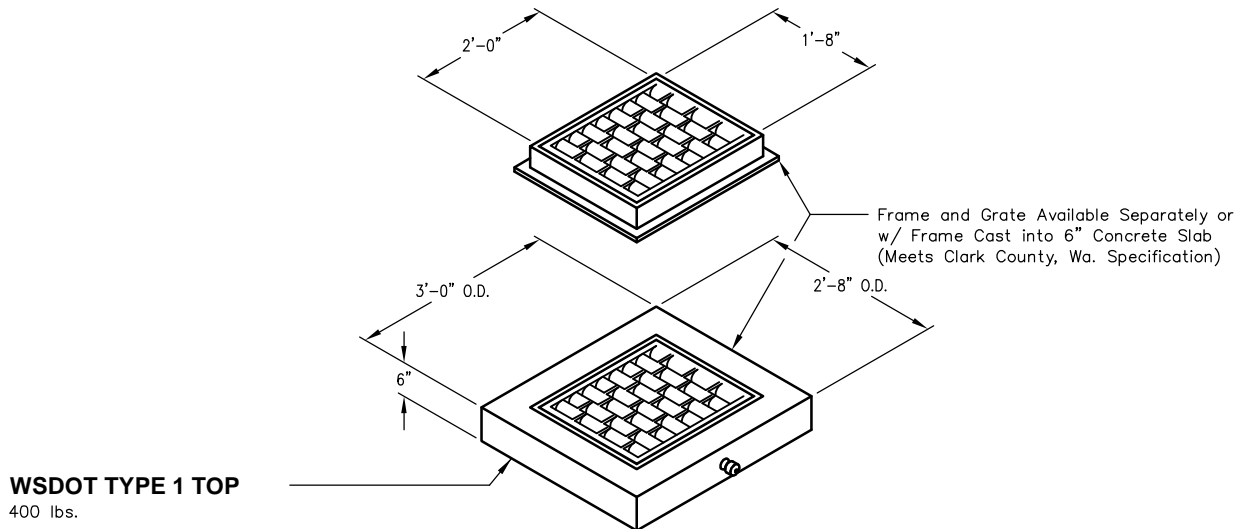


# WSDOT TYPE 1



## NOTES:

1. MEETS WSDOT SPECIFICATIONS STANDARD PLAN B-5.20-01
2. ALL DIMENSIONS SUBJECT TO ALLOWABLE SPECIFICATION TOLERANCES.
3. REFER TO BACK PAGE FOR OPTIONAL TOP UNITS.



PO Box 323, Wilsonville, Oregon 97070-0323  
Tel: (503) 682-2844 Fax: (503) 682-2657

## WSDOT TYPE 1

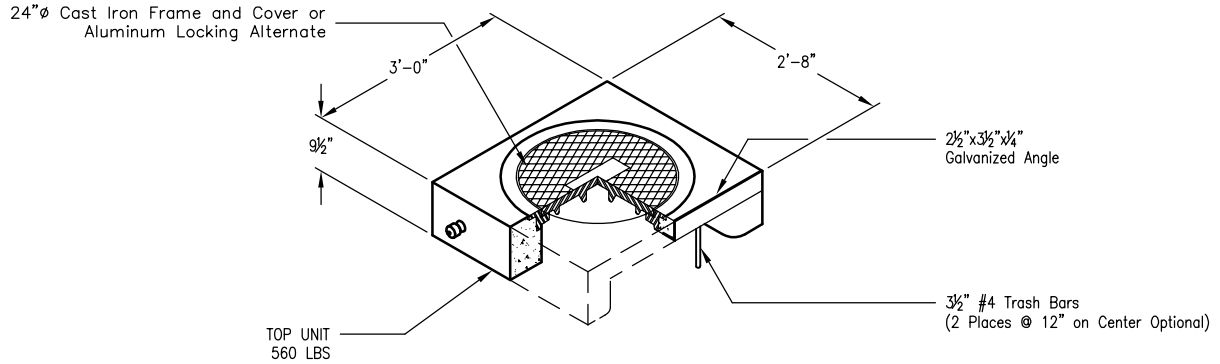
File Name: 020-TYPE 1-WSDOT

Issue Date: 2016

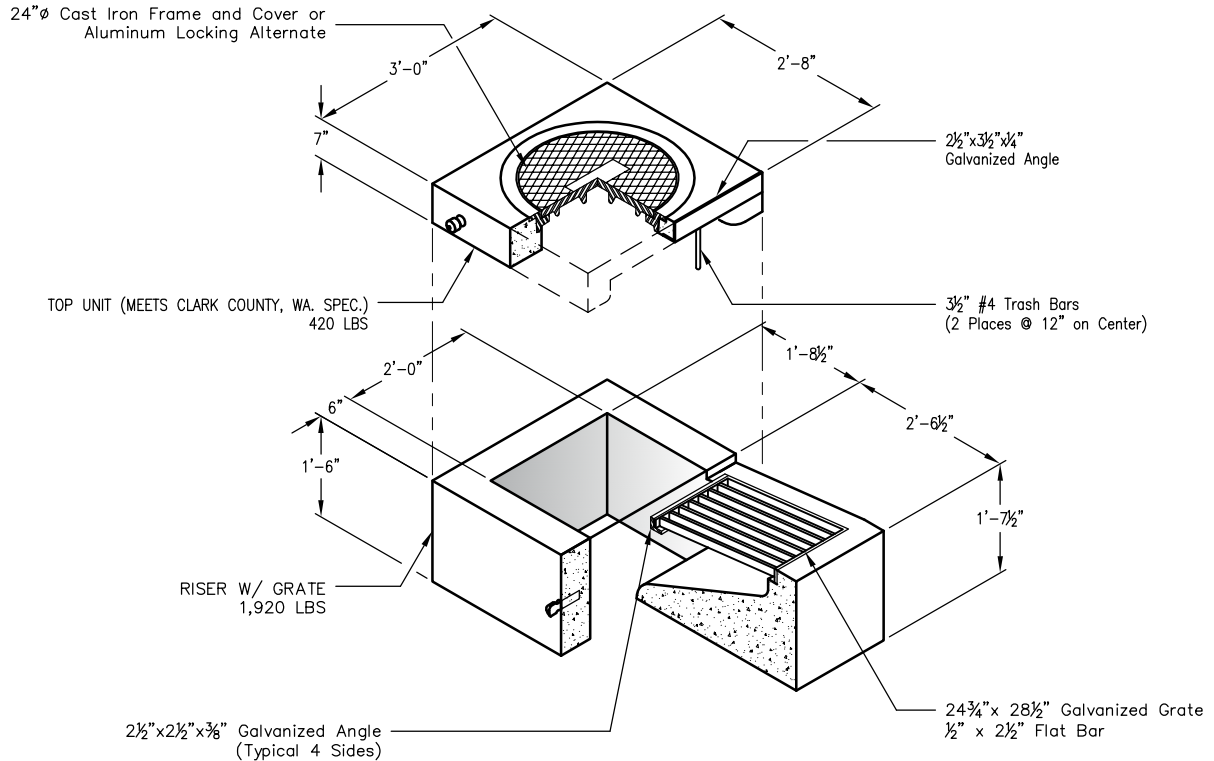
[oldcastleprecast.com/wilsonville](http://oldcastleprecast.com/wilsonville)

## WSDOT TYPE 1 CATCH BASIN

# WSDOT TYPE 1



## CURB INLET



## COMBINATION CURB INLET

### NOTE:

1. THE COMBINATION CURB INLET WORKS WITH A WSDOT TYPE 1 CATCH BASIN, BUT IT IS NOT A STANDARD WSDOT ITEM. IT CONFORMS TO CLARK COUNTY STANDARD DETAIL D3.0.
2. ALL DIMENSIONS SUBJECT TO ALLOWABLE SPECIFICATION TOLERANCES.



PO Box 323, Wilsonville, Oregon 97070-0323  
Tel: (503) 682-2844 Fax: (503) 682-2657

### WSDOT TYPE 1

File Name: 020-TYPE 1-WSDOT

Issue Date: 2016

[oldcastleprecast.com/wilsonville](http://oldcastleprecast.com/wilsonville)

### WSDOT TYPE 1 CATCH BASIN