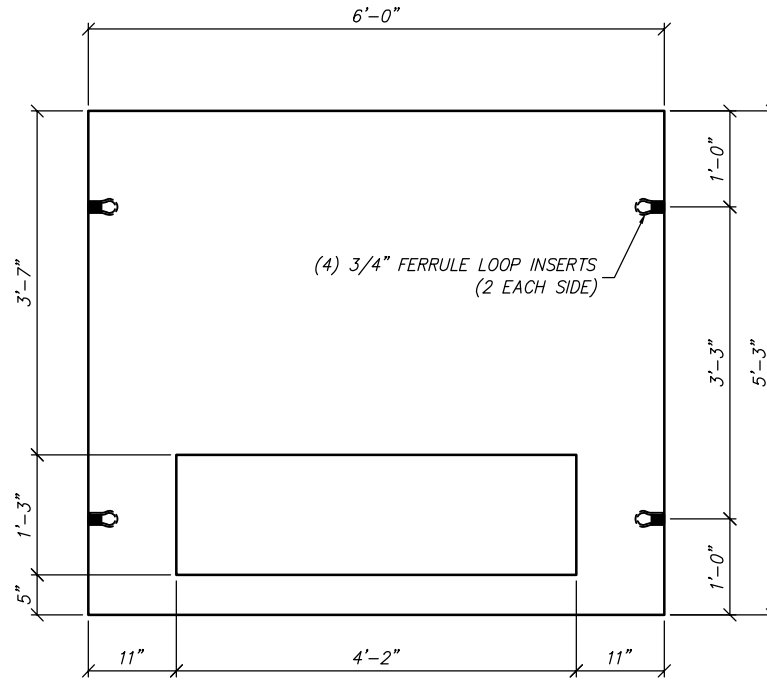
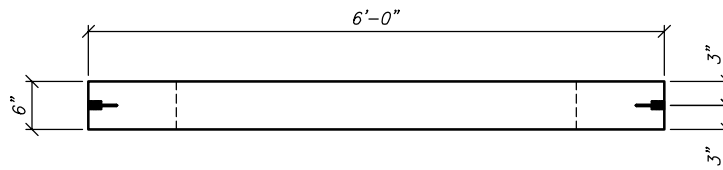


REV	DESCRIPTION	BY	DATE
A	CHANGED REBAR	AT	7/13/15
B	NCS UPDATES	CP	6/28/17



PLAN VIEW

SCALE: 1/2" = 1'-0"



SIDE VIEW

SCALE: 1/2" = 1'-0"

STRUCTURAL NOTES

1. CONCRETE: 28 DAY COMPRESSIVE STRENGTH $f_c = 5,000$ psi
2. REBAR: ASTM A-615 GRADE 60
3. MESH: ASTM A-1064 GRADE 65
4. DESIGN: ACI 318-14 BUILDING CODE



THIS DOCUMENT IS THE PROPERTY OF OLDCASTLE PRECAST, INC. IT IS CONFIDENTIAL, SUBMITTED FOR REFERENCE PURPOSES ONLY, AND SHALL NOT BE USED IN ANY WAY INJURIOUS TO THE INTERESTS OF, OR WITHOUT THE WRITTEN PERMISSION OF OLDCASTLE PRECAST, INC. COPYRIGHT ©2017 OLDCASTLE PRECAST, INC. ALL RIGHTS RESERVED

72" X 63" X 6" PADMOUNT

CUSTOMER

ELECTRICAL DISTRICT

DATE	SALES	DRAWN	ENGINEER	CHECKED	SALES ORDER
7/10/15		JH			

DRAWING NUMBER	REVISION	SHEET
06P9009-1	— REV DATE	1 OF 1

WEIGHT	1,850	LBS.
VOLUME	0.46	YD ³