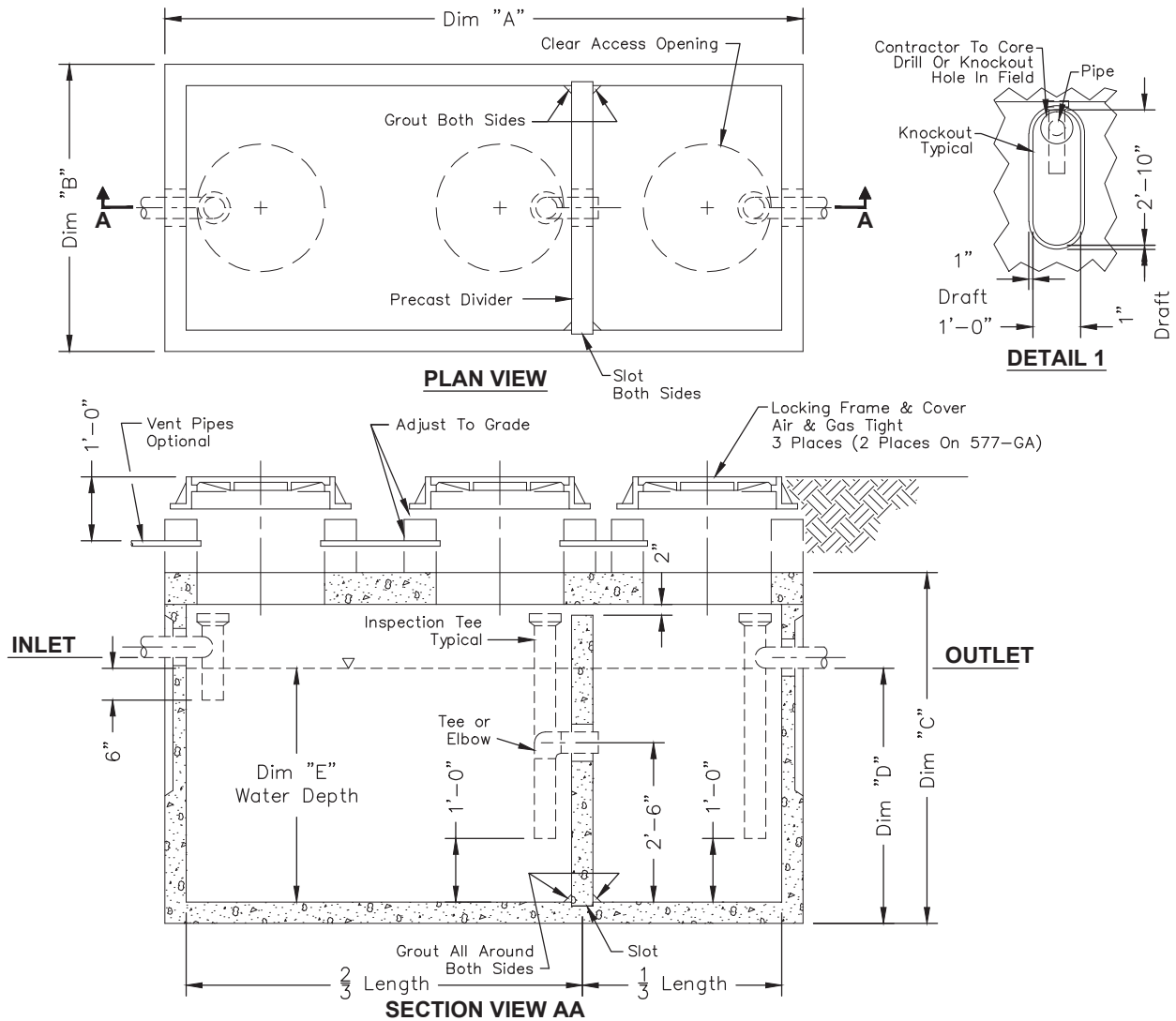


GREASE INTERCEPTOR SINGLE VAULT SYSTEM

600 – 7,000 Gallon System



Gallon Capacity	600	800	1000	1500	2000	2500	3000	4000	5000	6000	7000
Model No.	577-GA	577-GA	4484-GA	5106-GA	612-GA	612-GA	712-GA	712-GA	814-GA	818-GA	818-GA
Dim "A"	7'-0"	7'-0"	9'-0"	11'-2"	12'-8"	12'-8"	13'-1"	13'-1"	15'-7"	19'-11"	19'-11"
Dim "B"	4'-8"	4'-8"	5'-0"	5'-8"	6'-8"	6'-8"	8'-0"	8'-0"	9'-7"	9'-11"	9'-11"
Dim "C"	7'-0"	7'-0"	7'-2"	7'-2"	8'-0"	8'-0"	8'-7"	8'-7"	10'-0 1/2"	10'-5"	10'-5"
Dim "D"	3'-7"	4'-8"	4'-2"	4'-3"	4'-7"	5'-6 1/2"	5'-1"	6'-8"	7'-4"	7'-1"	8'-0"
Water Depth Dim "E"	3'-3"	4'-4"	3'-10"	3'-11"	3'-9 1/2"	4'-9"	4'-8"	6'-3"	6'-1"	5'-8"	6'-7"

Design Criteria:

Uniform Plumbing Code – Appendix H

$$\text{Number Of Meals Per Peak Hours} \times \text{Waste Flow Rate} \times \text{Retention Time} \times \text{Storage Factor} = \text{Capacity In Gallons}$$

Notes:

- Concrete: 28 Day Compressive Strength $f_c = 7000$ psi
- Rebar: ASTM A-615 Grade 60
- Mesh: ASTM A-185 Grade 65
- Design: ACI-318-02 Building Code
ASTM C-857 "Minimum Structural Design Loading For Underground Precast Concrete Utility Structures"
- Loads: H-20 Truck Wheel w/ 30% Impact Per AASHTO
- Fill w/ Clean Water Prior To Start-Up Of System
- Contractor To Supply & Install All Piping & Sampling Tees
- Gray Water Only, Black Water Shall Be Carried By Separate Side Sewer

SCALE: 3/8 = 1'-0"

Items Shown Are Subject To Change Without Notice
Issue Date: April 2016