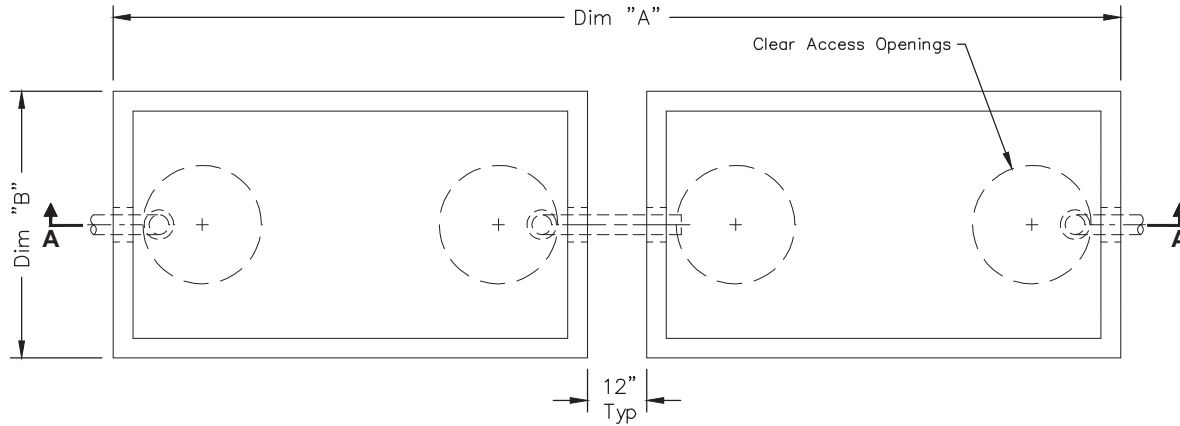
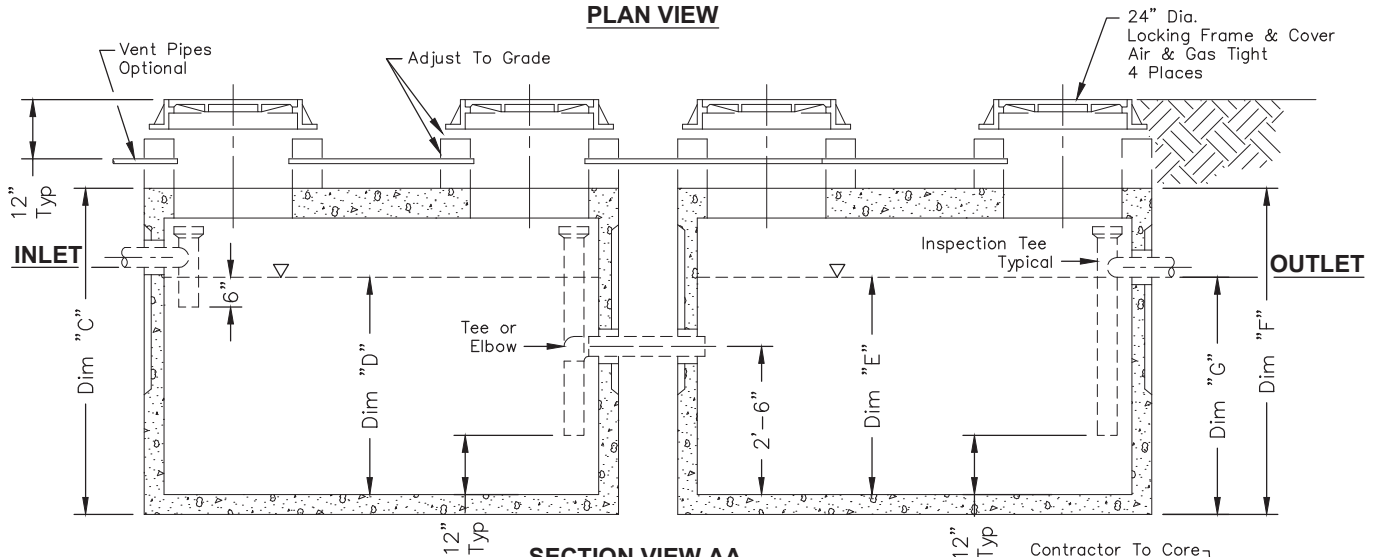


GREASE INTERCEPTOR DOUBLE VAULT SYSTEM

600 – 9,000 Gallon System

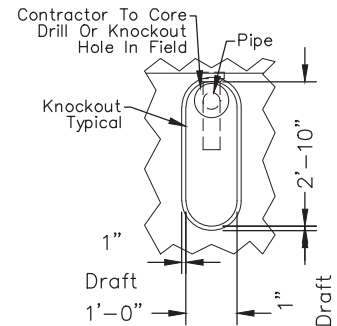


PLAN VIEW



SECTION VIEW AA

Gallon Capacity	6000	7000	8000	9000
Model No.	6000-GAS	7000-GAS	8000-GAS	9000-GAS
Dim "A"	26'-9"	27'-2"	27'-2"	32'-2"
Dim "B"	8'-0"	8'-0"	8'-0"	9'-7"
Dim "C"	8'-7"	8'-7"	8'-7"	8'-6 1/2"
Water Depth Dim "D"	4'-11"	5'-4"	6'-1"	5'-3"
Water Depth Dim "E"	4'-11"	5'-4"	6'-1"	5'-3"
Dim "F"	8'-0"	8'-7"	8'-7"	8'-6 1/2"
Dim "G"	5'-9"	5'-9"	6'-6 1/2"	6'-6 1/2"



DETAIL 1

Design Criteria:

Uniform Plumbing Code – Appendix H

$$\text{Number Of Meals Per Peak Hours} \times \text{Waste Flow Rate} \times \text{Retention Time} \times \text{Storage Factor} = \text{Capacity In Gallons}$$

Notes:

- Concrete: 28 Day Compressive Strength $f'_c = 7000$ psi
- Rebar: ASTM A-615 Grade 60
- Mesh: ASTM A-185 Grade 65
- Design: ACI-318-02 Building Code
ASTM C-857 "Minimum Structural Design Loading For Underground Precast Concrete Utility Structures"
- Loads: H-20 Truck Wheel w/ 30% Impact Per AASHTO
- Fill w/ Clean Water Prior To Start-Up Of System
- Contractor To Supply & Install All Piping & Sampling Tees
- Gray Water Only, Black Water Shall Be Carried By Separate Side Sewer

Items Shown Are Subject To Change Without Notice
 Issue Date: April 2016