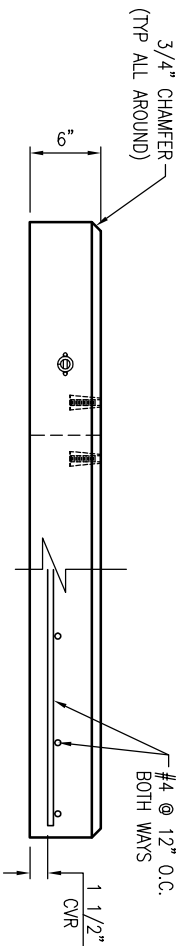
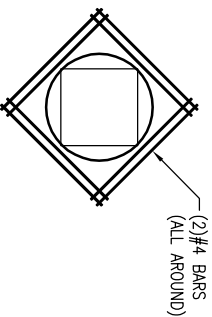


PLAN VIEW
SCALE: 3/8" = 1'-0"



VIEW-A
SCALE: 3/8" = 1'-0"



TYPICAL REINFORCEMENT
FOR OPENINGS
SCALE: N.T.S.

- GENERAL NOTES:**
1. CONCRETE: 28 DAY COMPRESSIVE STRENGTH $F'_c = 4,500$ PSI (MIN).
 2. REINFORCING: ASTM A-615, GRADE 60.
 3. SLAB DESIGNED FOR 144-216 FONZ CABINET LOAD ONLY.
 4. SLAB DESIGNED FOR 150 MPH WIND LOAD, IN ACCORDANCE WITH ASCE 7-10.
 5. SLAB SHALL BE SUPPORTED IN ACCORDANCE WITH AT&T PROJECT SPECIFICATIONS (I.E. LEVEL AND COMPACTED BEARING SURFACE).

1. USE EXACT BAR SIZE AND SPACING AS NOTED ABOVE.
2. ALL STEEL CUT OUT FOR OPENINGS WILL BE REPLACED. HALF REINFORCEMENT ON EACH SIDE OF OPENING. INCLUDE (2) ADDITIONAL #4 DIAGONAL BARS AROUND OPENING (SEE TYPICAL REINFORCEMENT FOR ALL OPENINGS)

REVISIONS

REVISION	DATE	BY	SHEET	DESCRIPTION OF REVISION	REQUESTED BY
A	5/14/2013	LD	1	ADDED AT&T PIN NUMBER TO TITLE BLOCK	CONTRACTOR
B					

SECTION	WEIGHT (lb)	COMPOSITION
TOTAL	1,350	0.33



THIS DOCUMENT IS THE PROPERTY OF OLDCASTLE PRECAST, INC. IT IS CONFIDENTIAL AND NOT TO BE REPRODUCED OR TRANSMITTED IN ANY FORM OR BY ANY MEANS, WITHOUT THE WRITTEN PERMISSION OF OLDCASTLE PRECAST, INC. COPYRIGHT © 2013 OLDCASTLE PRECAST, INC. ALL RIGHTS RESERVED.

52"X52"X6" OD 144/216 FONZ PADS
SUBMITTAL LAYOUT

CUSTOMER				AT & T (PIN# ATT: 100029792)	
DATE	SALES	DRAWN	ENGINEER	CHECKED	SALES ORDER
10/17/14	---	---	---	---	---
DRAWING NUMBER			REVISION		
144-216 Fonz 52x52 Pad			A		
			05/14/13		
			1 OF 1		